

V2

AssistMyTeam

PST to MBOX Converter

Export emails from PST to MBOX



Welcome to PST to MBOX Converter

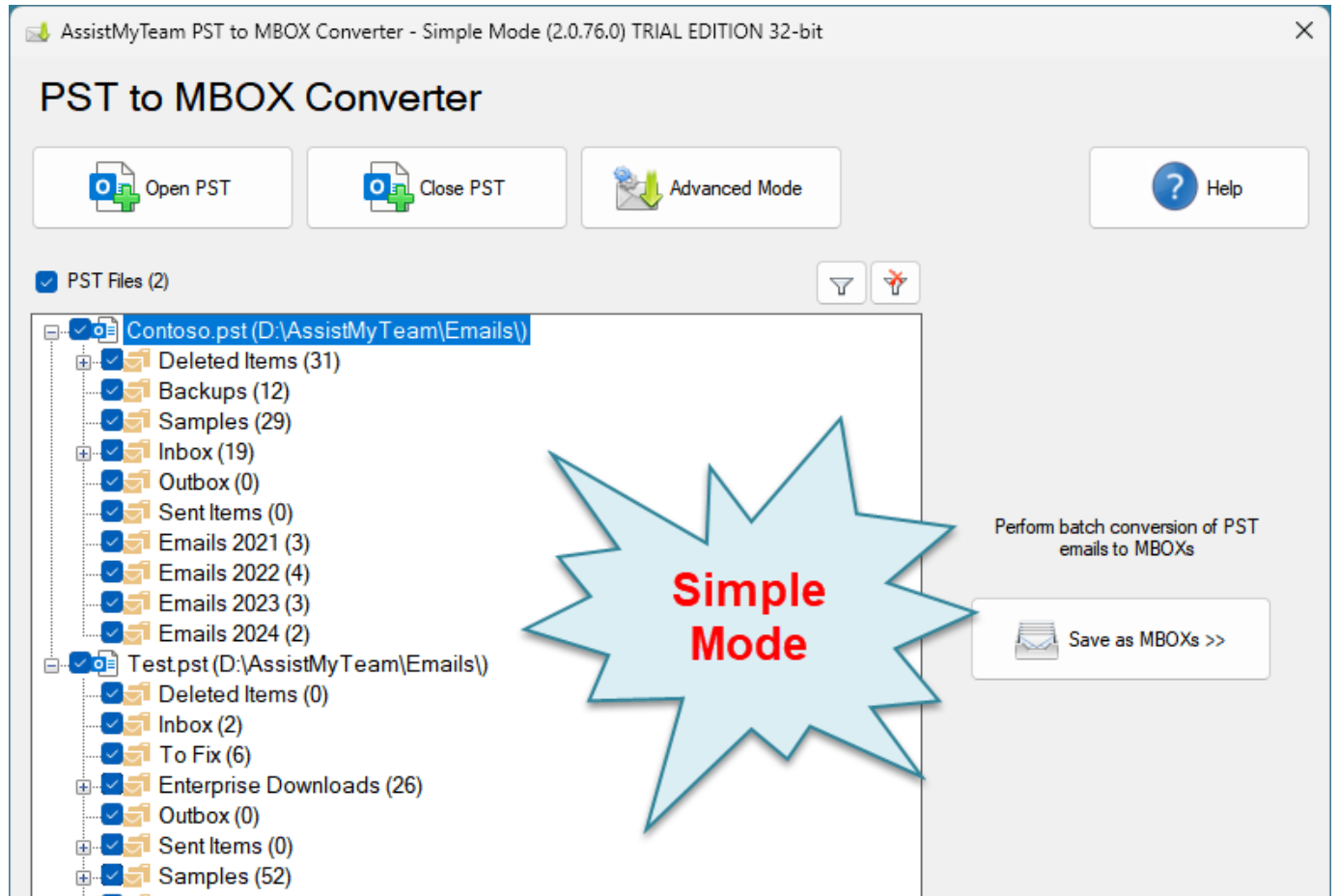
Convert and save emails, attachments, folders from PST files to MBOX files, while preserving the folder structure and hierarchy – all in a click.

- Convert emails of each PST folder to MBOX.
- Bulk extract email file attachments to a location on your hard drive.
- Read PST created by any version of Microsoft Outlook, including newer Unicode and older ANSI formatted PST files.
- Use keywords and filters to search and find specific emails of importance before converting to MBOX files.
- Two different modes of conversion –multiple emails to MBOXs, folder or whole PST into MBOXs.
- Maintains original PST folder's structure in disk to keep MBOX version of emails in same folders.
- Retains embedded images, attachments, metadata, and email attributes while exporting PST to MBOX.
- All conversions and processing performed locally. Ideal for closed systems.
- Special MSI installer available for enterprise-wide deployment*.
- Support Windows 11, 10, 8, 7 and Windows Servers.

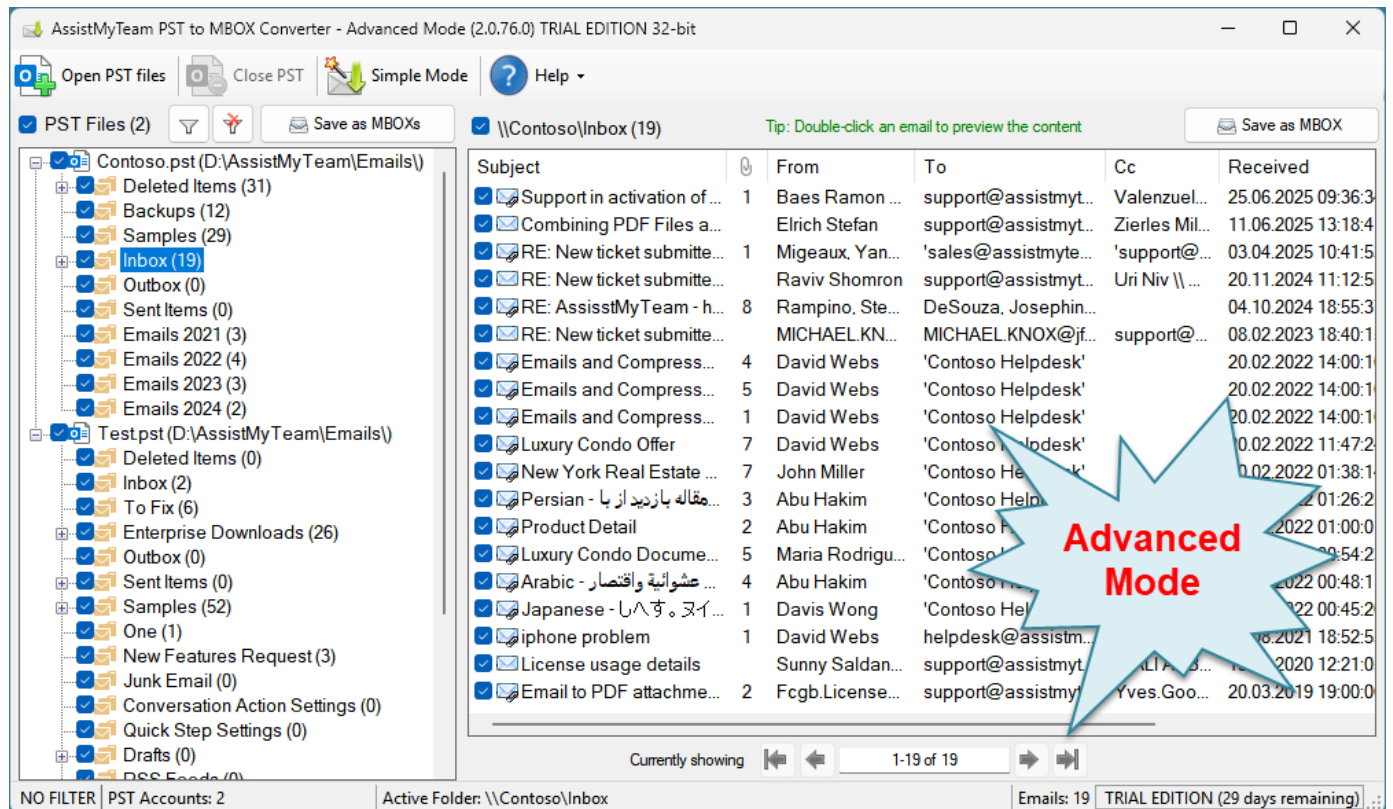
For a quick overview, refer to the [product website](#).

How It Works?

AssistMyTeam PST to MBOX Converter can operate in two modes – **Simple** (default) and **Advanced**, which has an interactive user interface with many options to export emails to MBOX files.



PST to MBOX Converter – Simple Mode



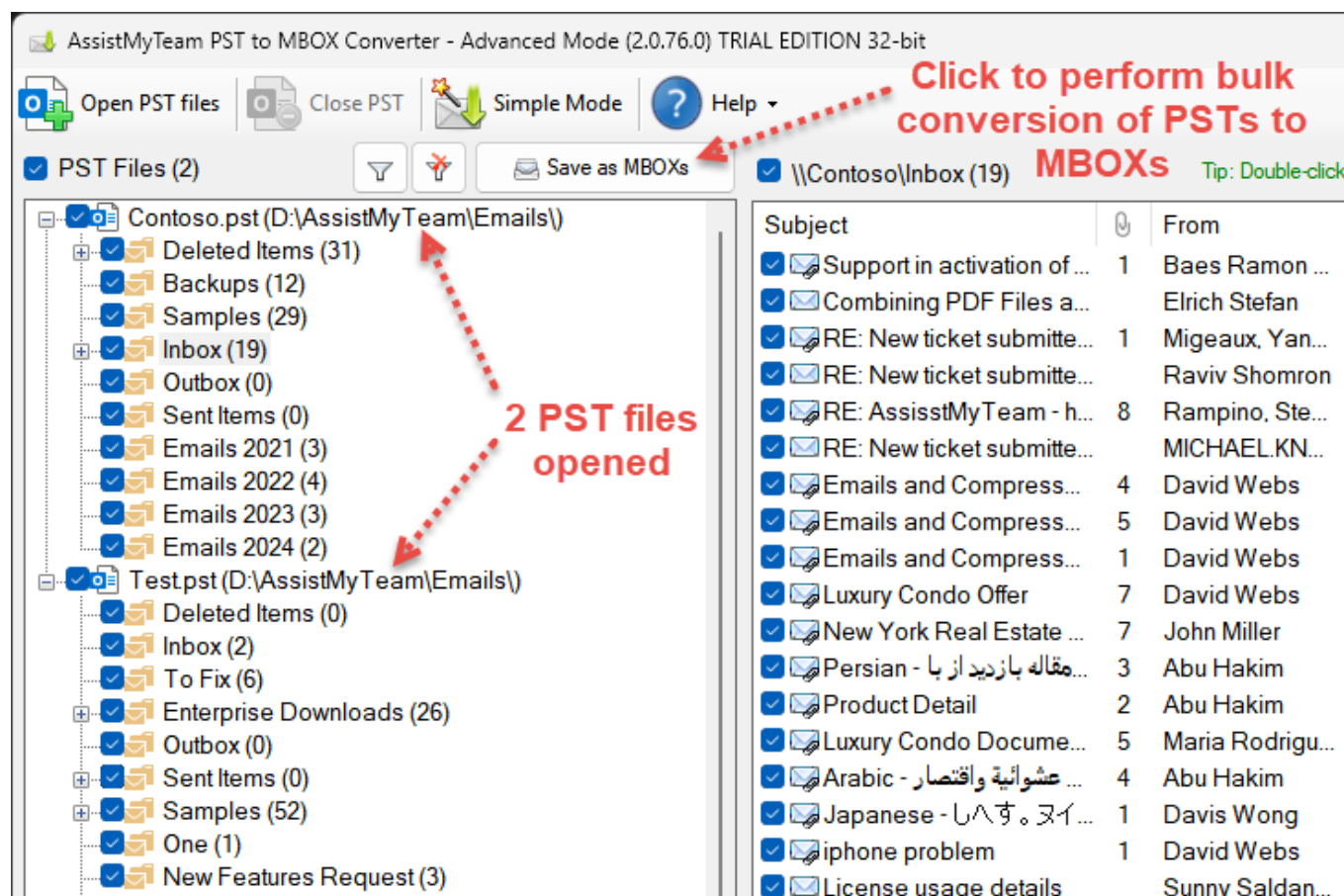
PST to MBOX Converter – Advanced Mode

There are two ways to perform MBOX conversion with AssistMyTeam PST to MBOX Converter:

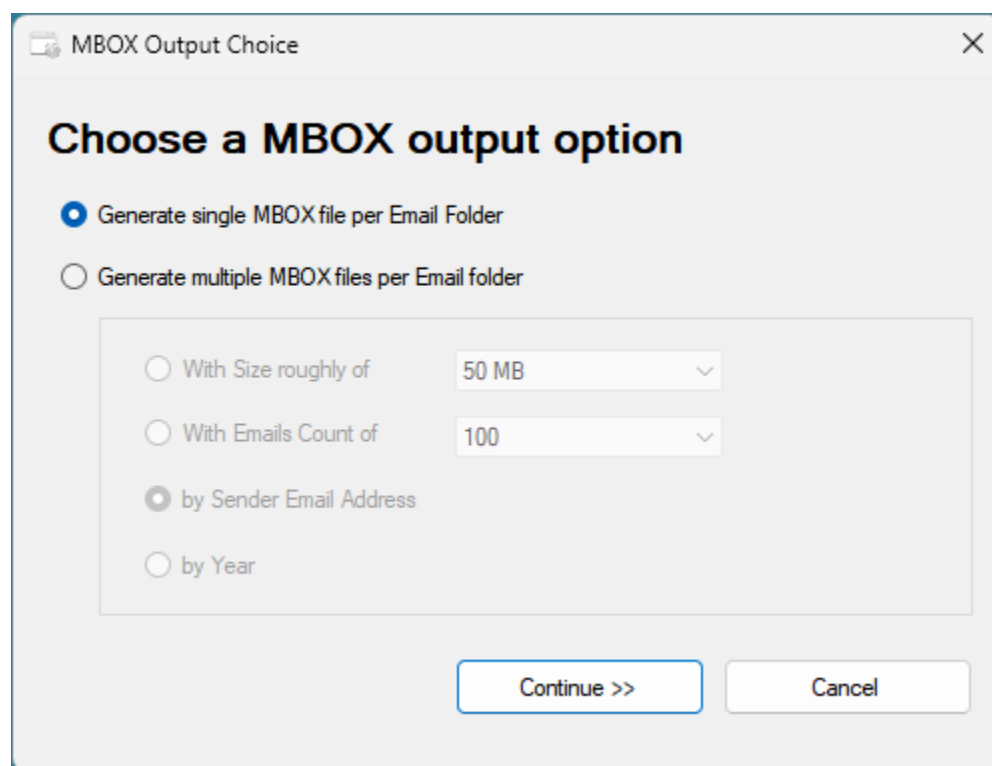
- A. Whole PST to MBOXs
- B. Chosen Folder to a MBOX

A. Convert whole PSTs to MBOX (bulk conversion)

In this mode, you can perform bulk conversion of the whole contents of each PST folder to MBOX format. Simply, click the 'Save All as MBOX' button option just above the PST tree-view control.

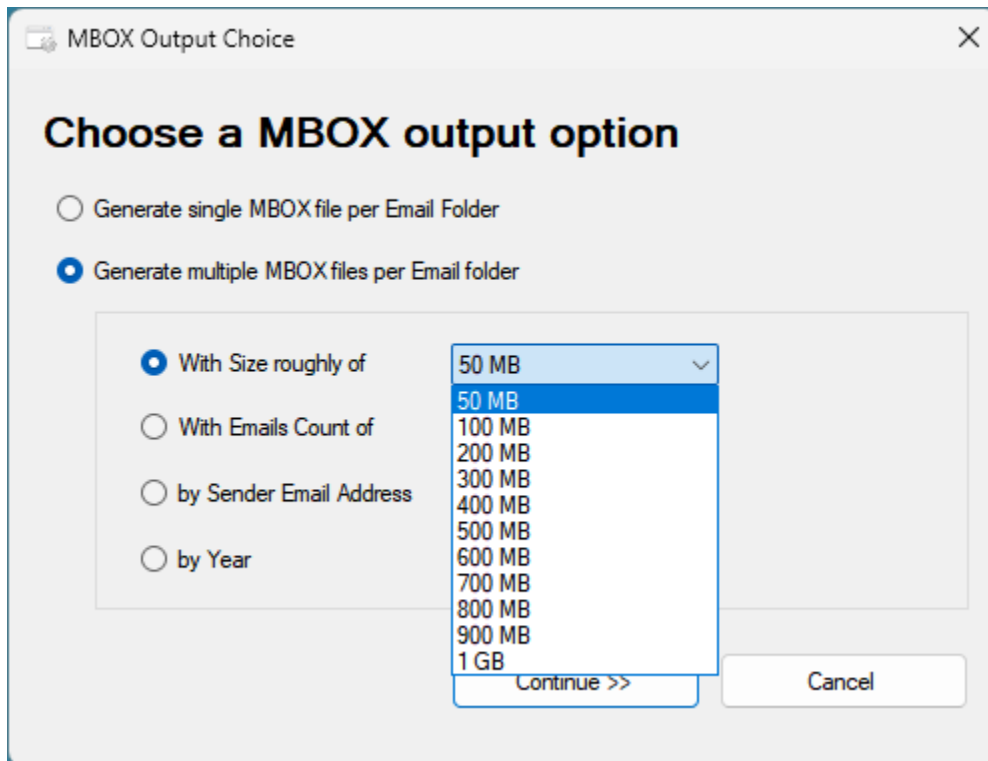


This will prompt you with MBOX output dialog box, where you will need to opt if to generate a single MBOX file per email folder, or multiple MBOX files per email folder.

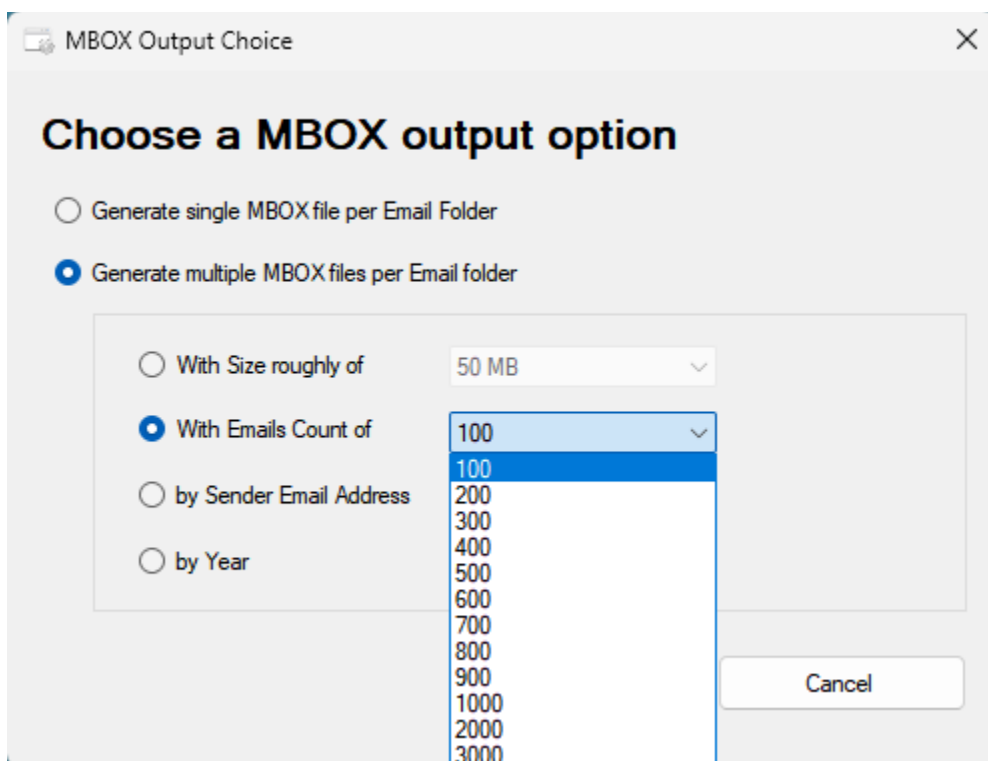


If you choose the latter option (i.e., **Generate multiple MBOX files per email folder**), you will need to specify on what parameter the number of MBOX files will be generated from your PST folders.

Multiple MBOX files By Size - For instance, the app can generate multiple MBOX files from your Inbox or an email folder, based on your selection of the expected size of the MBOX file (from 50 MB to 1 GB).



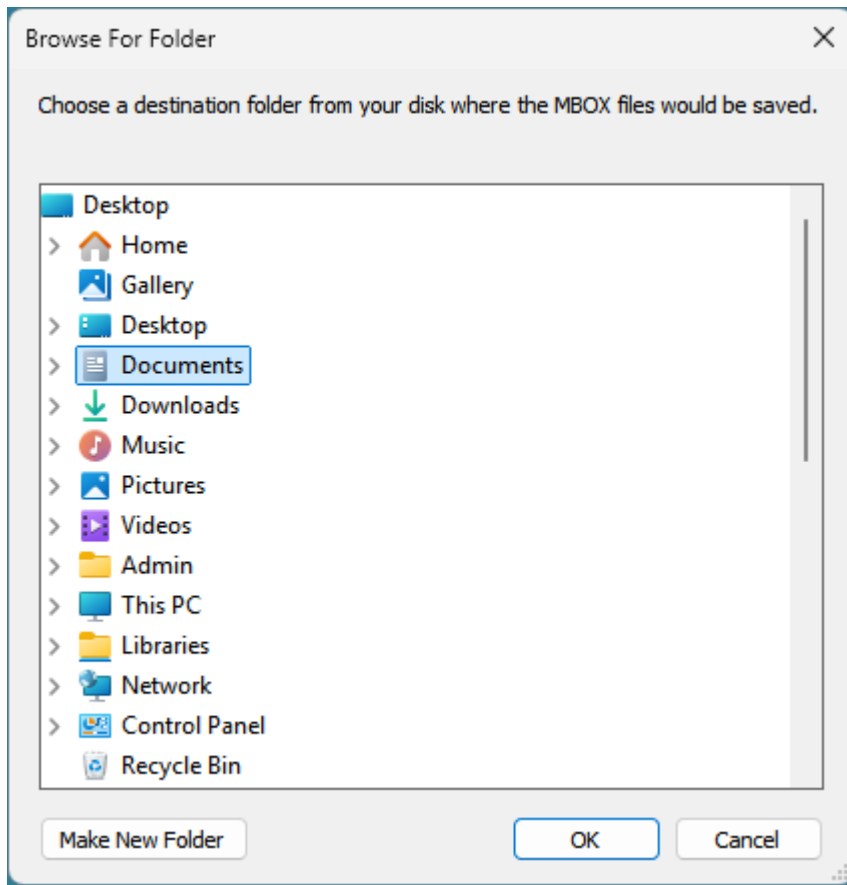
Multiple MBOX files by Emails Count - Another parameter is to generate multiple MBOX files of an email folder by specifying the number of emails you want in the MBOX file. For example, you can choose from 100 emails to 10,000 emails, so that emails of an email folder are equally distributed between multiple MBOX files.



Multiple MBOX files by Sender Email Address - With this option, the app will create multiple MBOX files from an email folder, where one MBOX file will be created for each sender, storing all the email messages from that sender.

Multiple MBOX files by Year - With this option, the app will create that number of MBOX files based on the time range in Year of all your emails of your email folder. For instance, if your Inbox has 5 years of emails, the app will create 5 MBOX files, where each MBOX file will have only those emails that were received on a particular year.

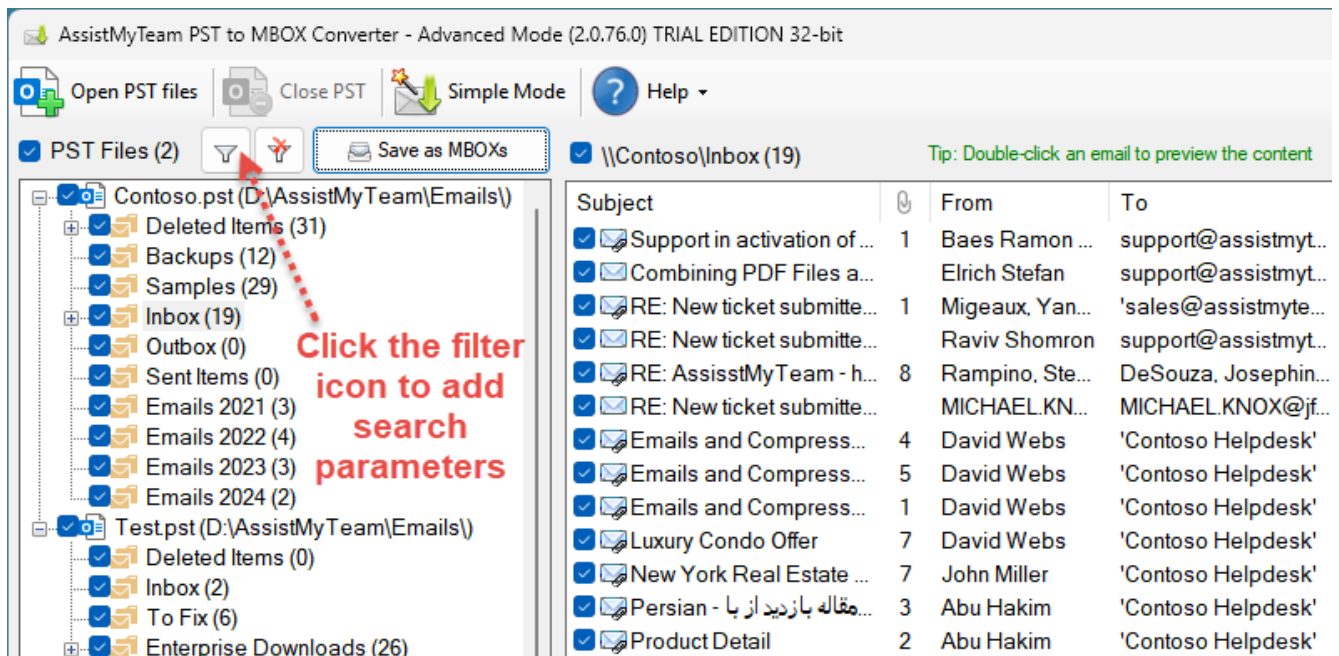
Once you have selected a MBOX output option, you will be prompted with the **'Browse for Folder'** dialog box. Choose a destination folder where the emails from your Gmail Inbox and other folders will be exported as MBOX files.



The app will recreate and retain the same original folders structure of your PST in the chosen destination folder of your computer to store the various exported MBOX email files for easy access, sharing and filing in your local computer.

Apply keywords search and filters

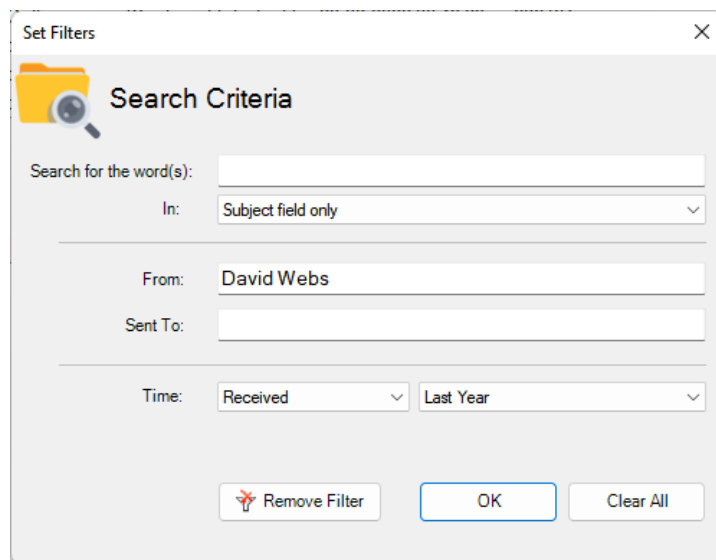
You can choose to perform a keyword search and apply filters and only perform the bulk conversions of those emails in the PST that fulfil the search parameters to MBOX. To do that, click the **'Filter'** button available on top of the PST tree-view control box.



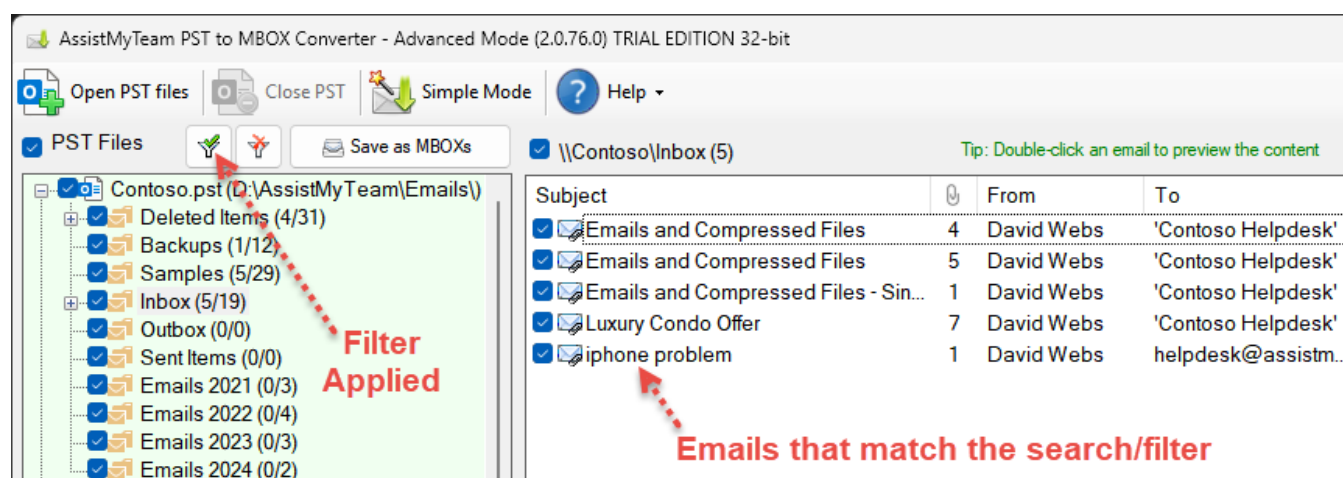
A dialog box for the search pop ups enabling you to input keywords search in the subject or body or both.

You can also filter the emails by matching the sender in the **From** field and/or the recipient in the **To** field.

Additionally, you can specify a time duration to restrict the emails that fall between the start and end date.

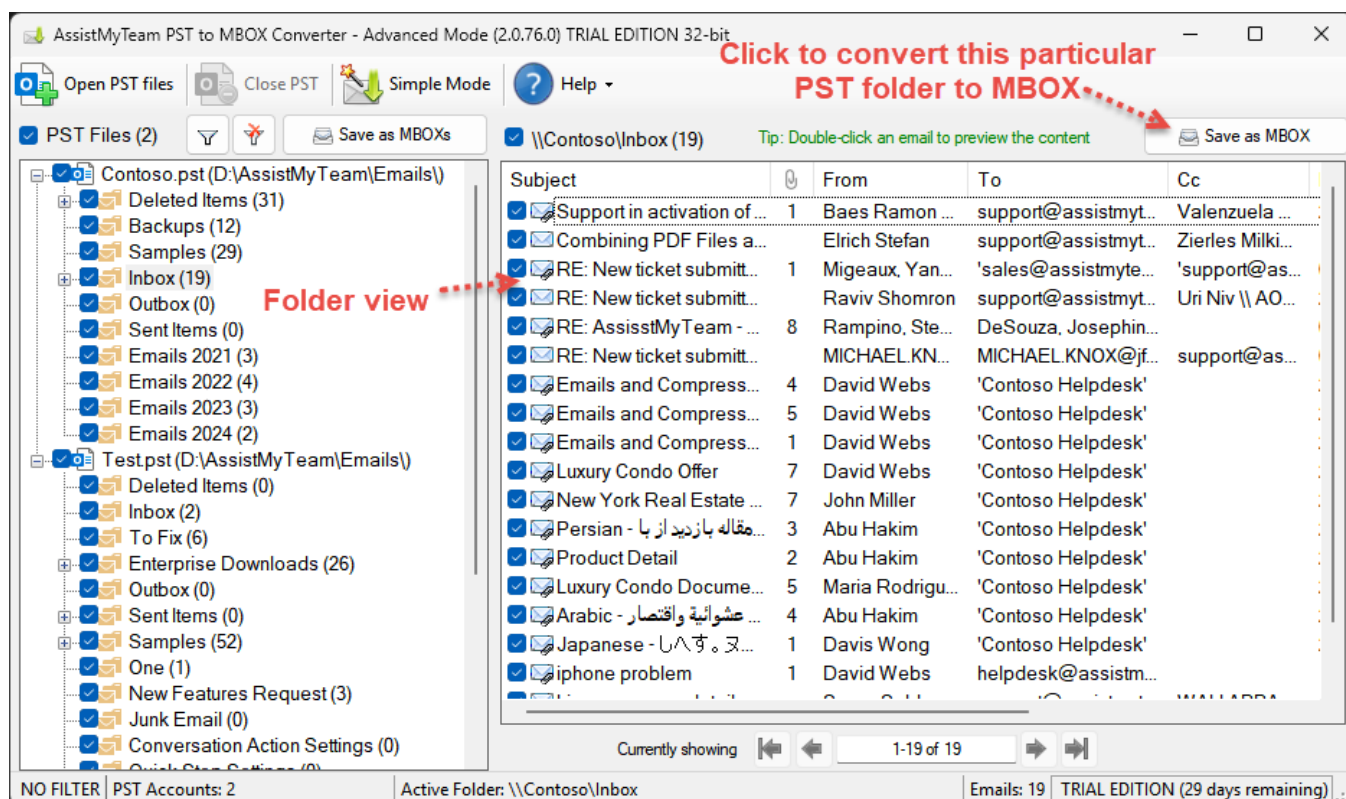


After applying the filters, the filter icon will change with a green tick mark and the background colour of the PST tree-view control box will also be in green. You will also notice that each folder entry in the tree-view control shows the number of emails that fulfilled the search filter out of the total emails, enclosed within brackets.

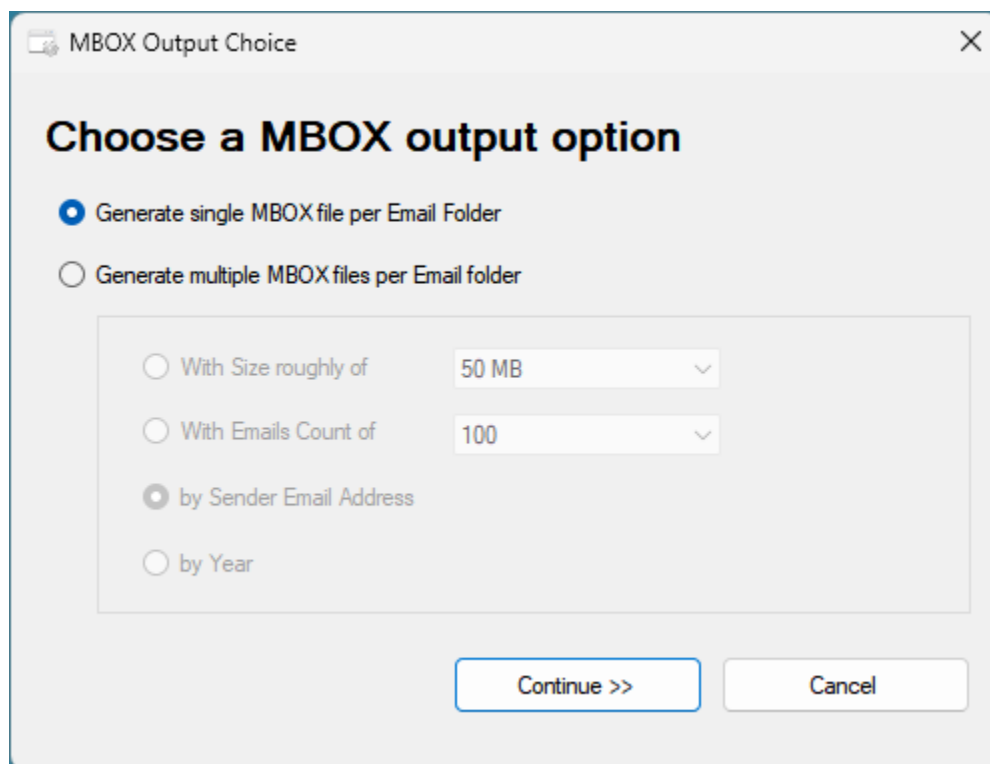


B. Convert emails of a PST folder to MBOX (multiple conversion)

At times, what you may need is only to convert emails of a particular folder within the PST data file. In such needs, you can perform the MBOX conversion by clicking the particular folder from the PST tree-view control box on the left side. This will show you all the emails in the folder view control on the right side. You can then proceed to click 'Save Folder as MBOX' button located on the extreme right corner of the folder view control.



If you choose to export all the emails of this particular folder to a new MBOX file, the App will prompt you with MBOX output dialog box where you will need to opt if to generate a single MBOX file per email folder, or multiple MBOX files per email folder.



And then, you will need to specify a destination folder where a new MBOX file will be created.

If you choose to export the emails of this particular mailbox folder to an existing MBOX file, you will be prompted to choose it from your computer.

