

V2

AssistMyTeam

MSG to MBOX Converter

Export MSG email files to MBOX



Welcome to MSG to MBOX Converter

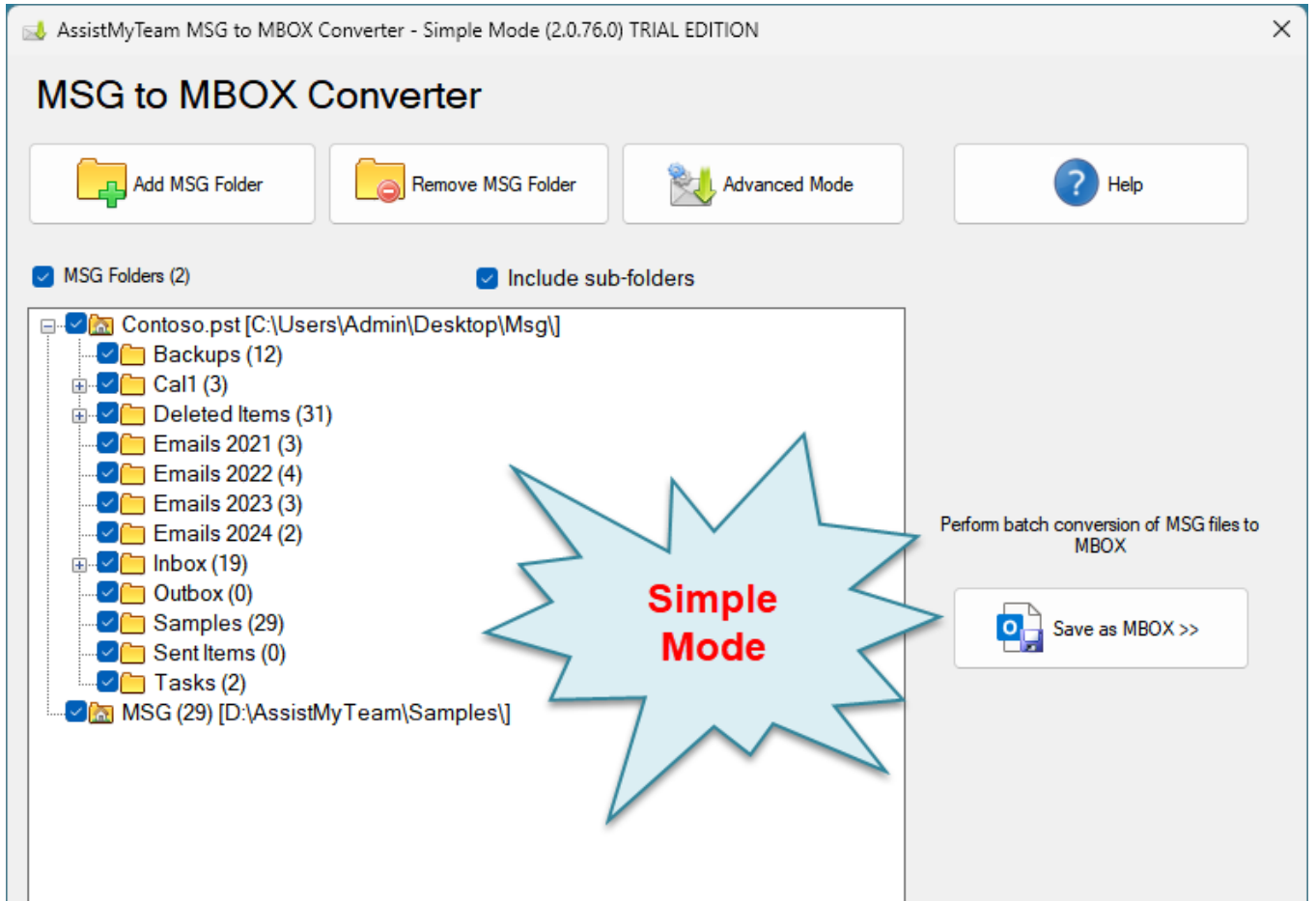
Convert and save MSG email files and folders to new or existing MBOX files, while preserving the folder structure and hierarchy – all in a click.

- Archive or export one or several emails or entire MSG file folders to MBOX files in a click.
- Backup email messages for regulatory or legal compliance.
- Preserves attachments, headers, formatting, inline images and hyperlinks of emails in the replicated MBOX files.
- Automatically enforce consistent naming convention to replicated MBOX files.
- Retain the same original MSG folders structure in the MBOX for easy access and filing.
- Special MSI installer available for enterprise-wide deployment*
- Support Windows 11, 10, 8, 7 and Windows Servers

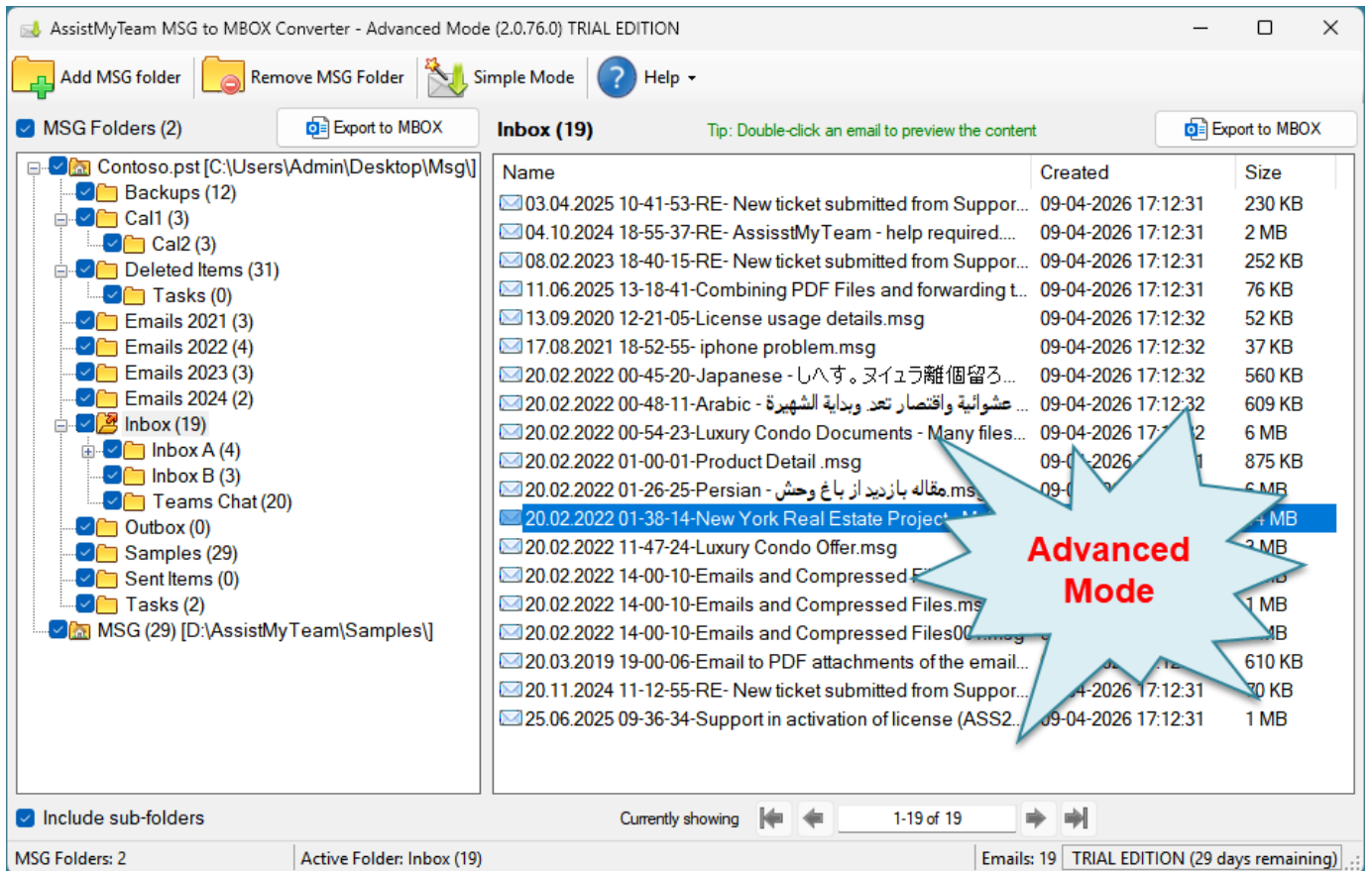
For a quick overview, refer to the [product website](#).

How It Works?

AssistMyTeam MSG to MBOX Converter can operate in two modes – **Simple** (default) and **Advanced**, which has an interactive user interface with many options to export MSG emails to MBOX file.



MSG to MBOX Converter – Simple Mode



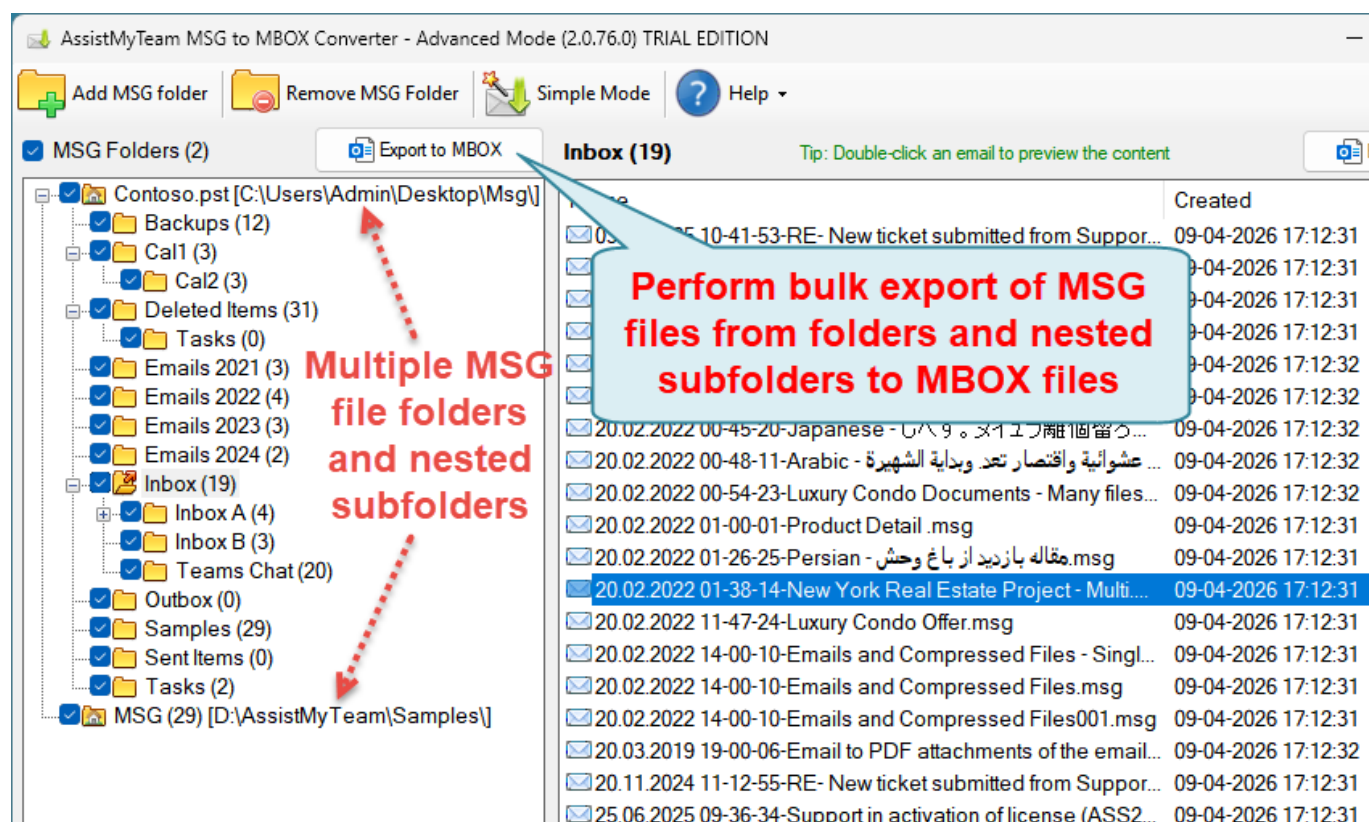
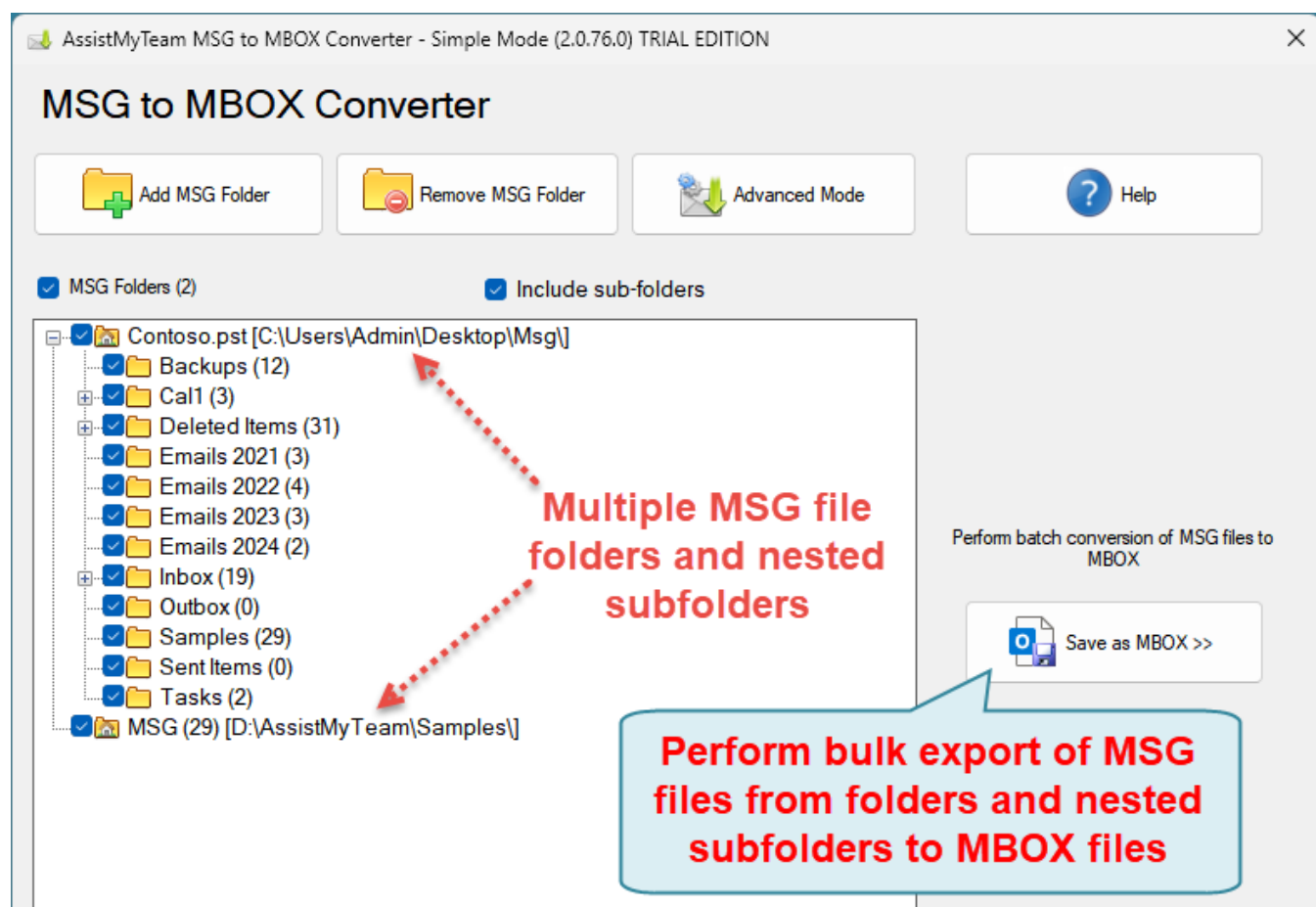
MSG to MBOX Converter – Advanced Mode

There are three ways to perform MBOX export with AssistMyTeam MSG to MBOX Converter:

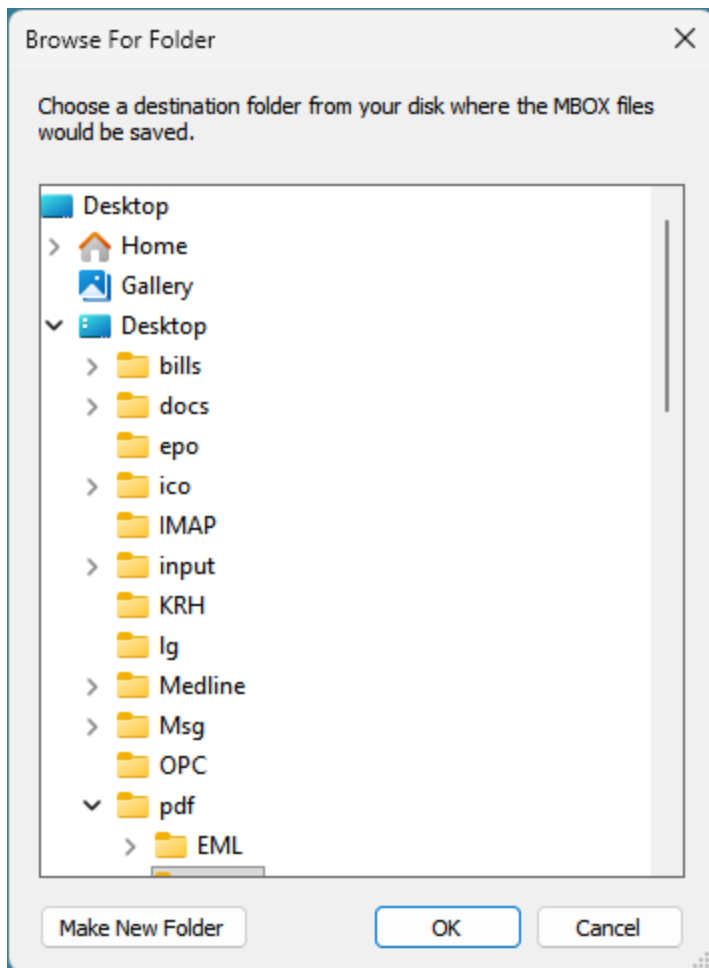
- A. Multiple MSG folders including nested subfolders to MBOX files
- B. Single MSG folder to new or existing MBOX
- C. Multiple MSG emails to an existing MBOX

A. Export multiple MSG folders including nested subfolders to MBOX (bulk export)

In this mode, you can perform bulk conversion of the whole contents of each MSG folder and nested subfolders to MBOX files. Simply, click the 'Export to MBOX' button option just above the MSG Folders tree-view control.



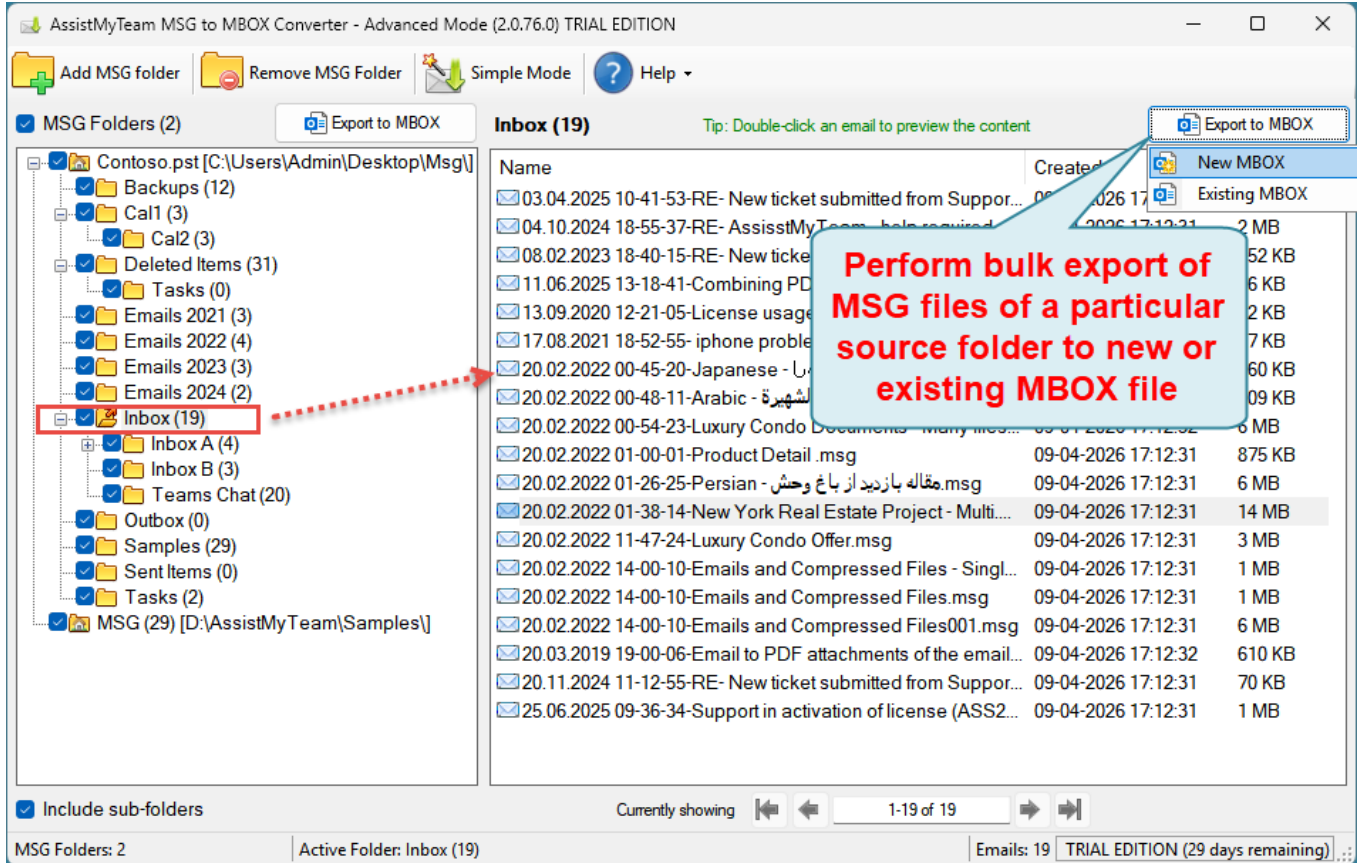
The app will display a **'Browse for Folder'** dialog box, where you can choose the destination folder where the MBOX files of the MSG files from each folder will be created.



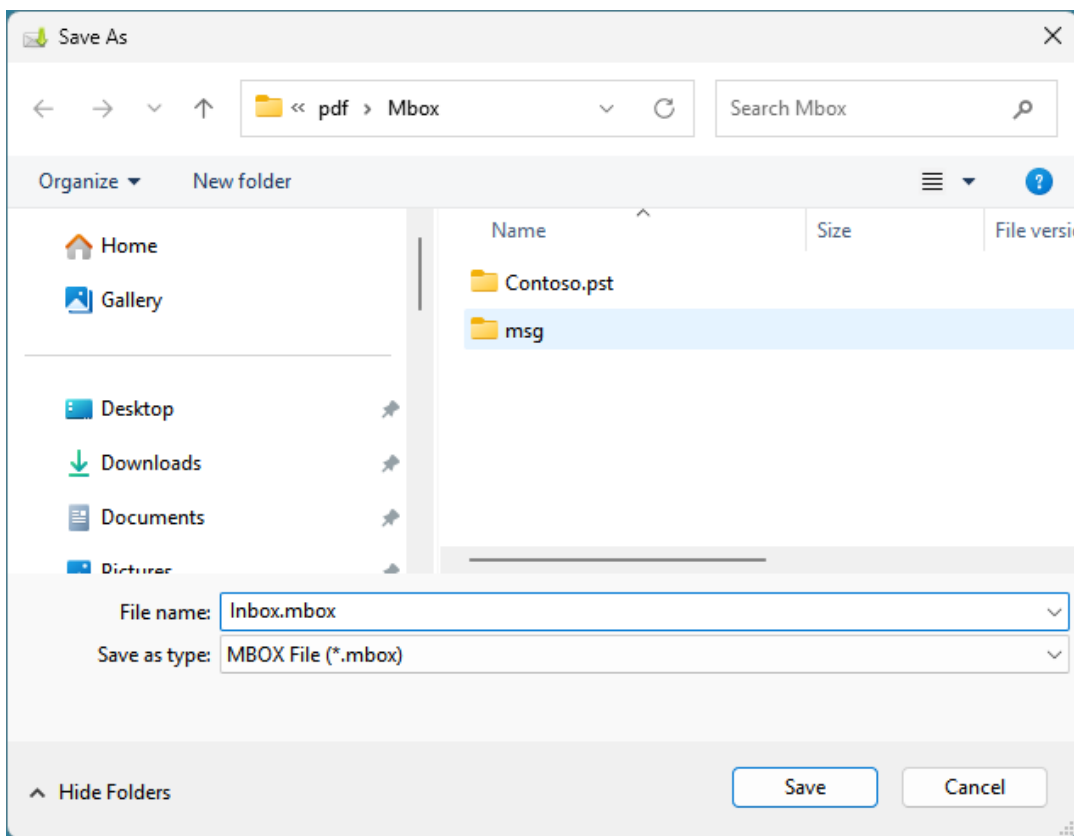
NOTE: The app will create new folders and subfolders similar to the hierarchy and structure of the source MSG folder and nested subfolders of your computer. If these folders structure are already present (existing) in the chosen destination folder, the app will re-use and direct the export of the MSG files to MBOX files to these existing folders/subfolders.

B. Export a particular MSG folder to new or existing MBOX (multiple export)

At times, what you may need is only to export all the MSG files of a particular folder only, to a new or existing MBOX file. In such needs, you can perform the MBOX export by clicking the particular folder from the MSG tree-view control box on the left side. This will show you all the emails in the folder view control on the right side. You can then proceed to click 'Export to MBOX' button, located on the extreme right corner of the folder view control.



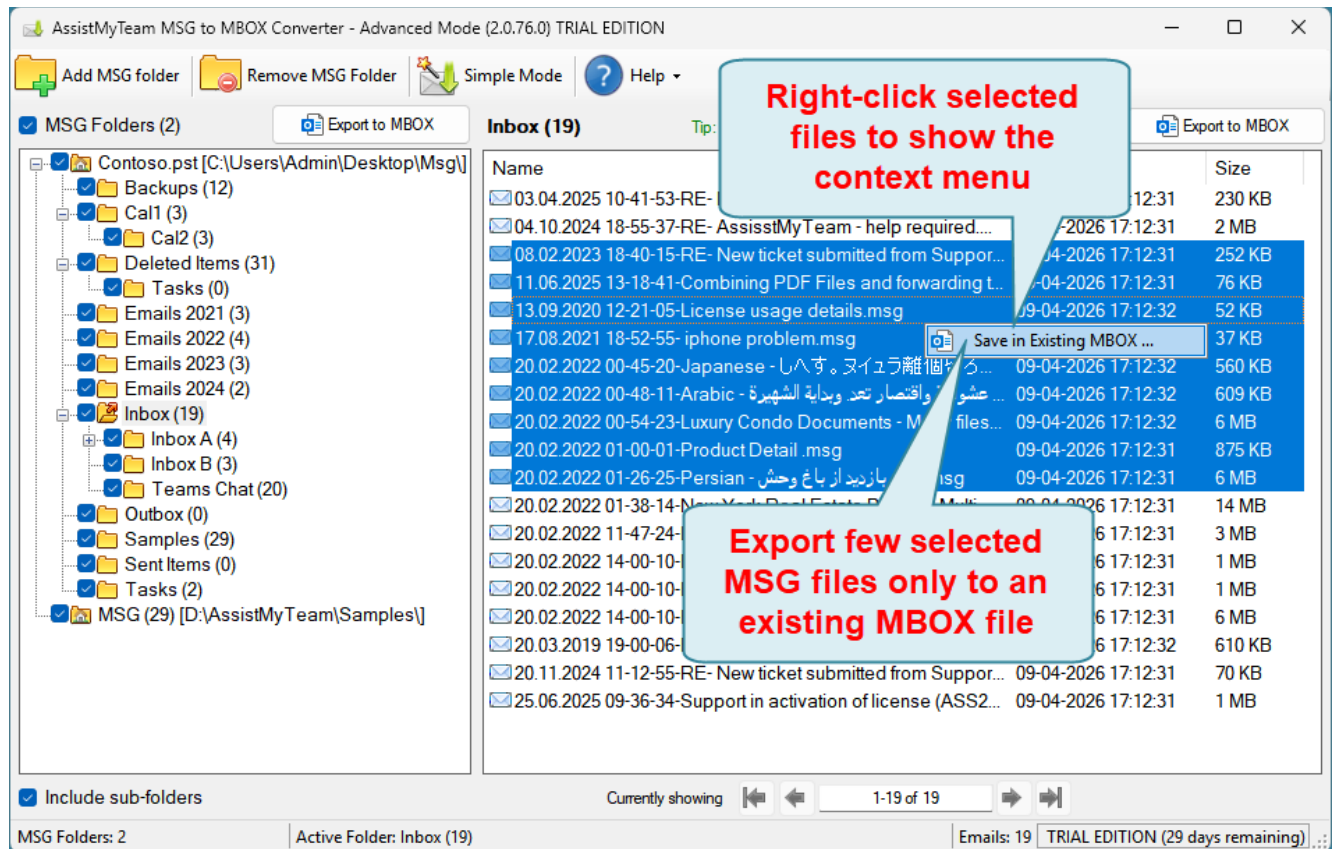
If you choose to export this particular MSG folder to a new MBOX file, the app will prompt you to specify a destination folder where a new MBOX file will be created.



If you choose to export the MSG files of this particular folder to an existing MBOX file, you will be prompted to choose a particular MBOX file from your computer.

C. Export selected few MSG files to an existing MBOX (multiple export)

If you are interested at exporting only a few selected MSG files to an existing MBOX file, just right-click the selected MSG files from the folder view and click 'Save in Existing MBOX' from the context menu.



And you will be prompted to choose a MBOX file from your computer. And then the app will append the selected MSG files to the existing collection of mails of the chosen MBOX file.

