

V2

AssistMyTeam

MBOX to PST Converter

Export MBOX email files to PST



Welcome to MBOX to PST Converter

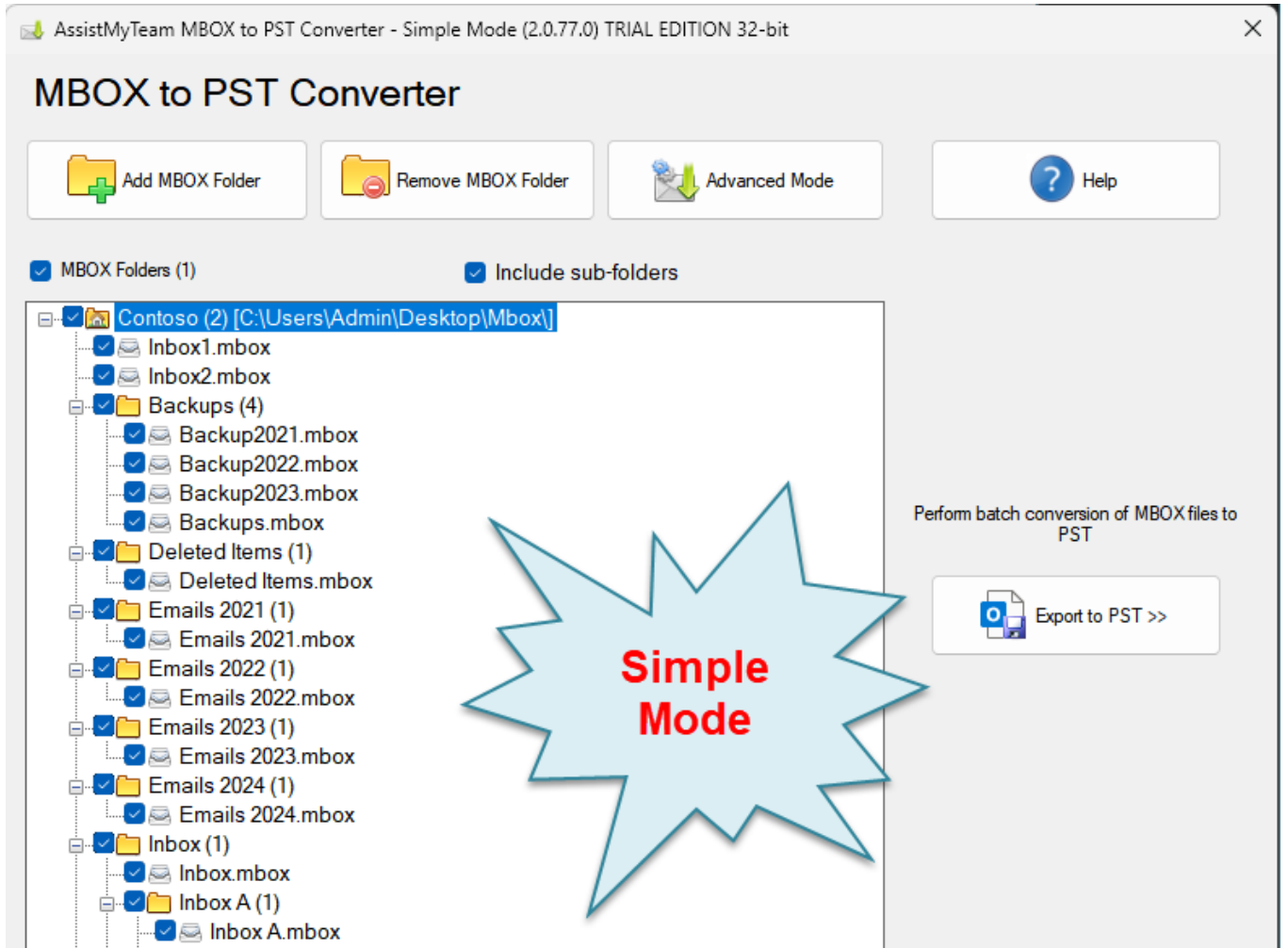
Convert and save MBOX email files and folders to new or existing PST files, while preserving the folder structure and hierarchy – all in a click.

- Archive or export one or several emails or entire MBOX file folders to PST files in a click.
- Backup email messages for regulatory or legal compliance.
- Preserves attachments, headers, formatting, inline images and hyperlinks of emails in the replicated PST files.
- Automatically enforce consistent naming convention to replicated PST files.
- Retain the same original MBOX folders structure in the PST for easy access and filing.
- Special MSI installer available for enterprise-wide deployment*
- Support Windows 11, 10, 8, 7 and Windows Servers

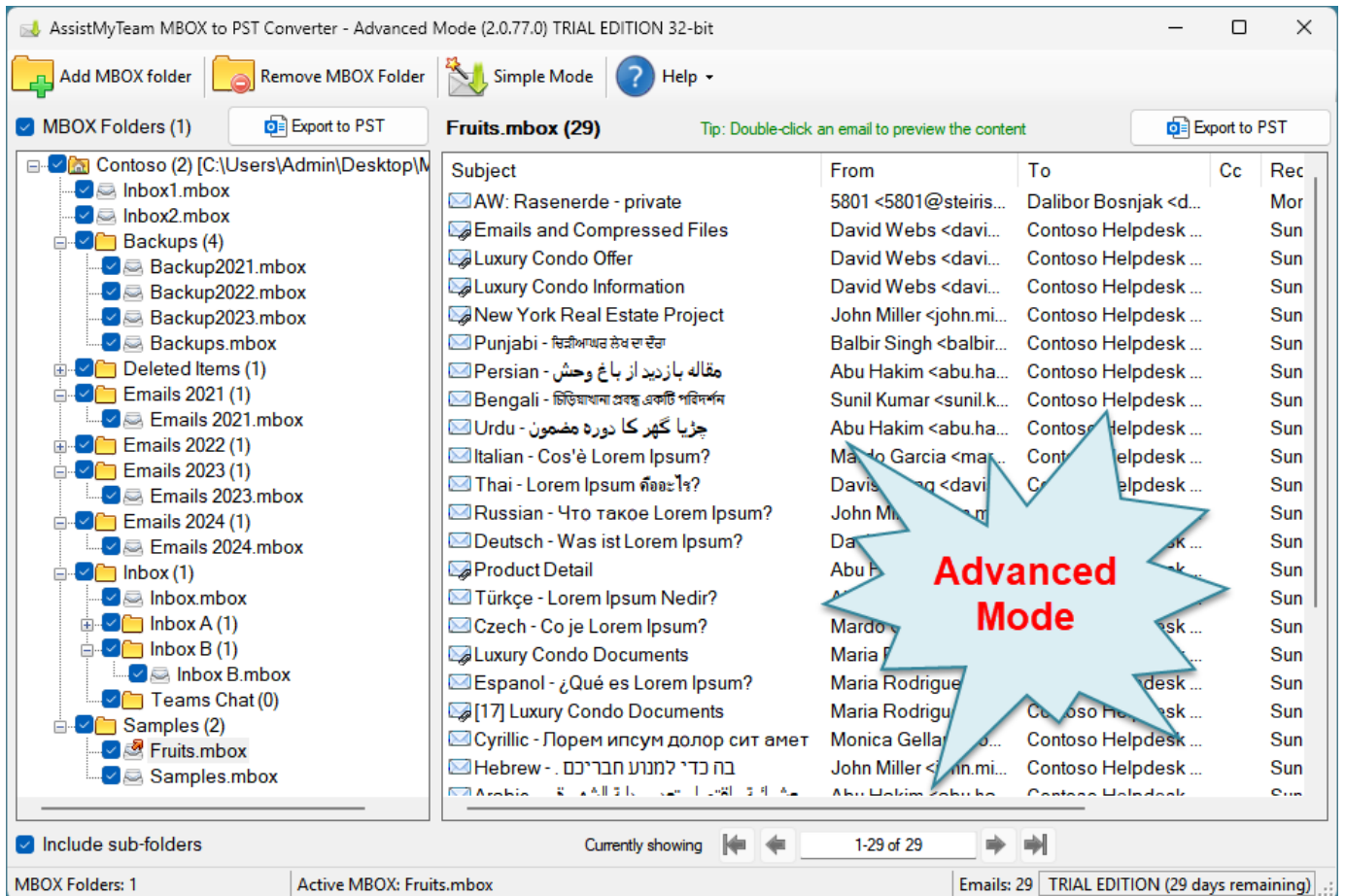
For a quick overview, refer to the [product website](#).

How It Works?

AssistMyTeam MBOX to PST Converter can operate in two modes – **Simple** (default) and **Advanced**, which has an interactive user interface with many options to export MBOX emails to PST file.



MBOX to PST Converter – Simple Mode



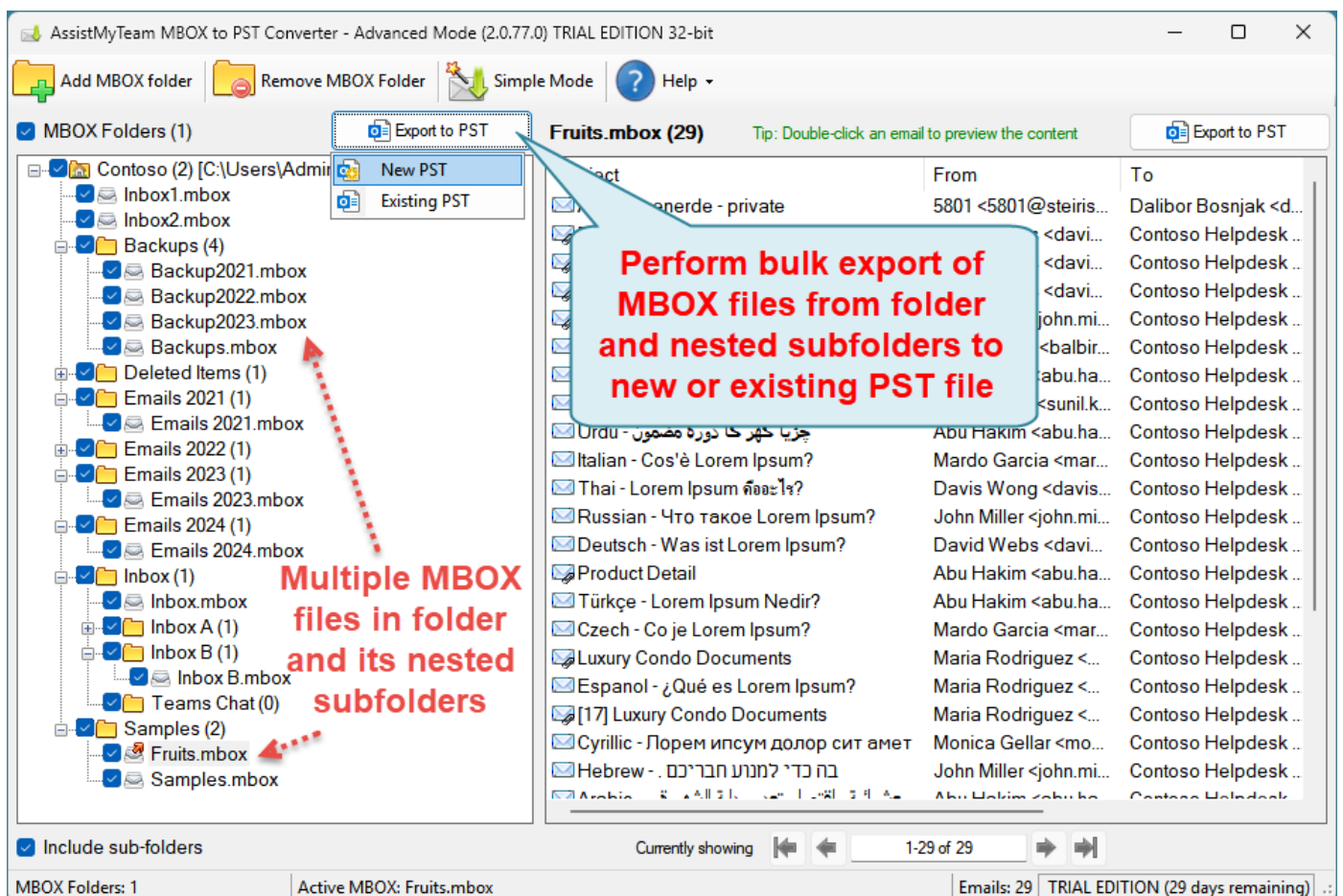
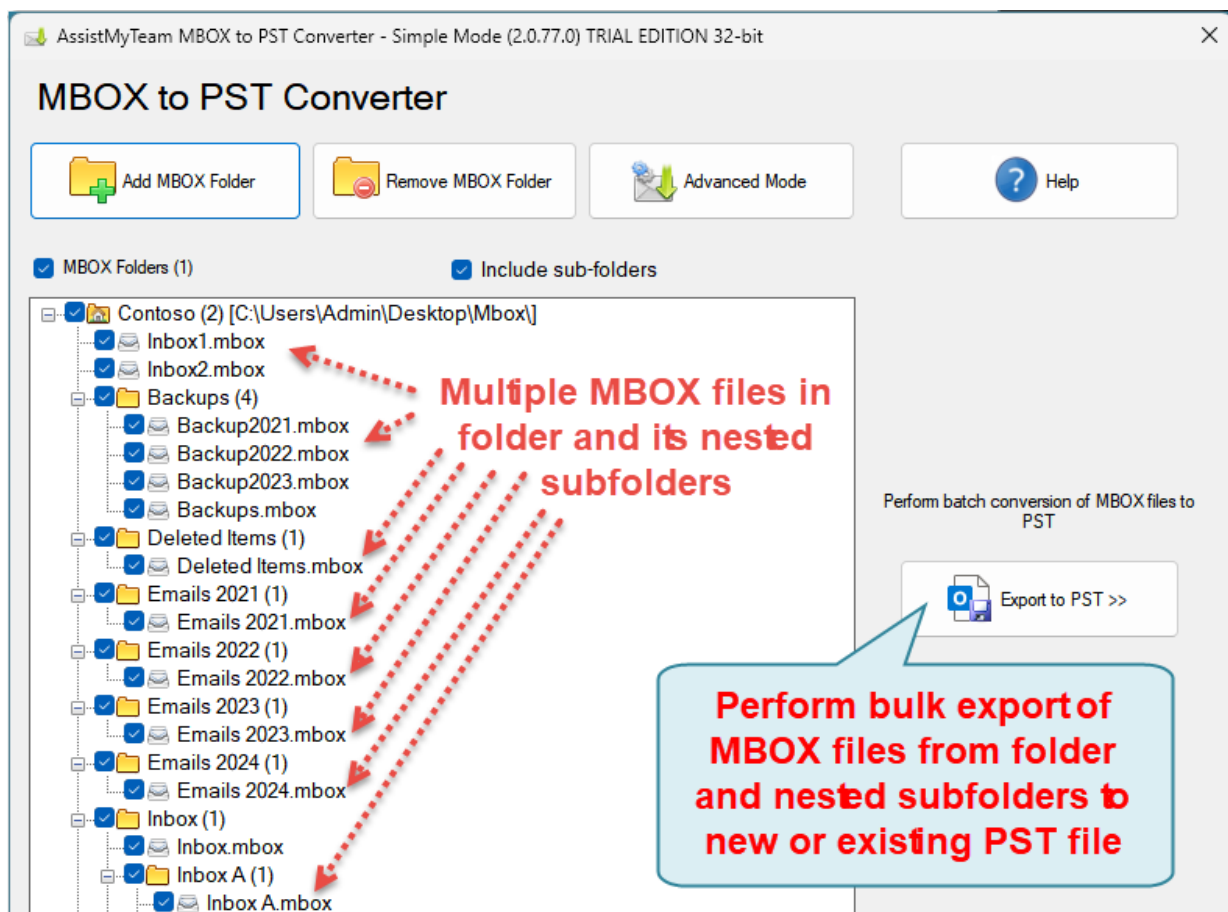
MBOX to PST Converter – Advanced Mode

There are four ways to perform emails export with AssistMyTeam MBOX to PST Converter:

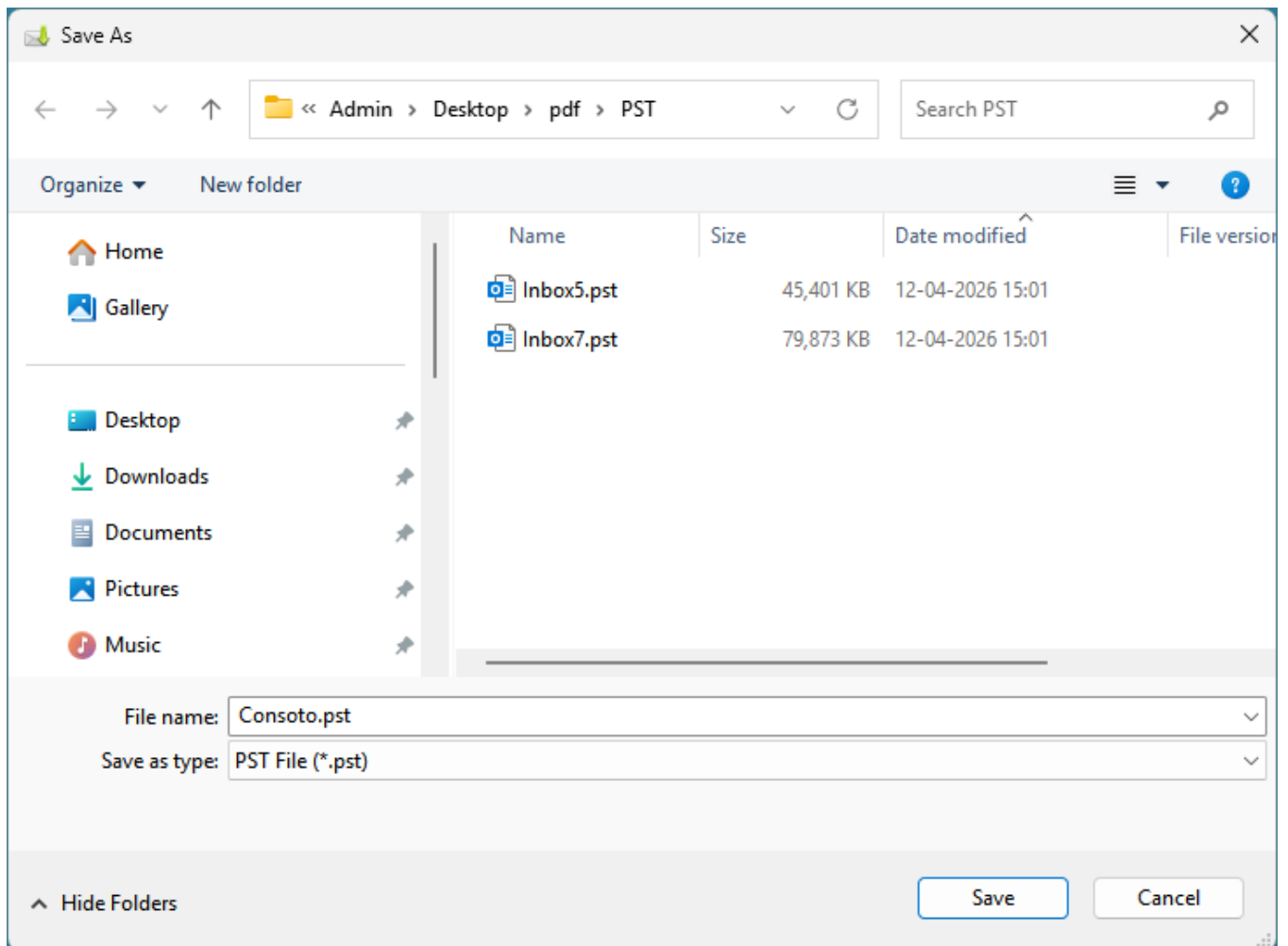
- A. Multiple MBOX folders including nested subfolders to new or existing PST
- B. Single MBOX file to new or existing PST
- C. Selected few emails within MBOX to an existing PST
- D. Single email of MBOX to an existing PST

A. Export multiple MBOX folders including nested subfolders to PST (bulk export)

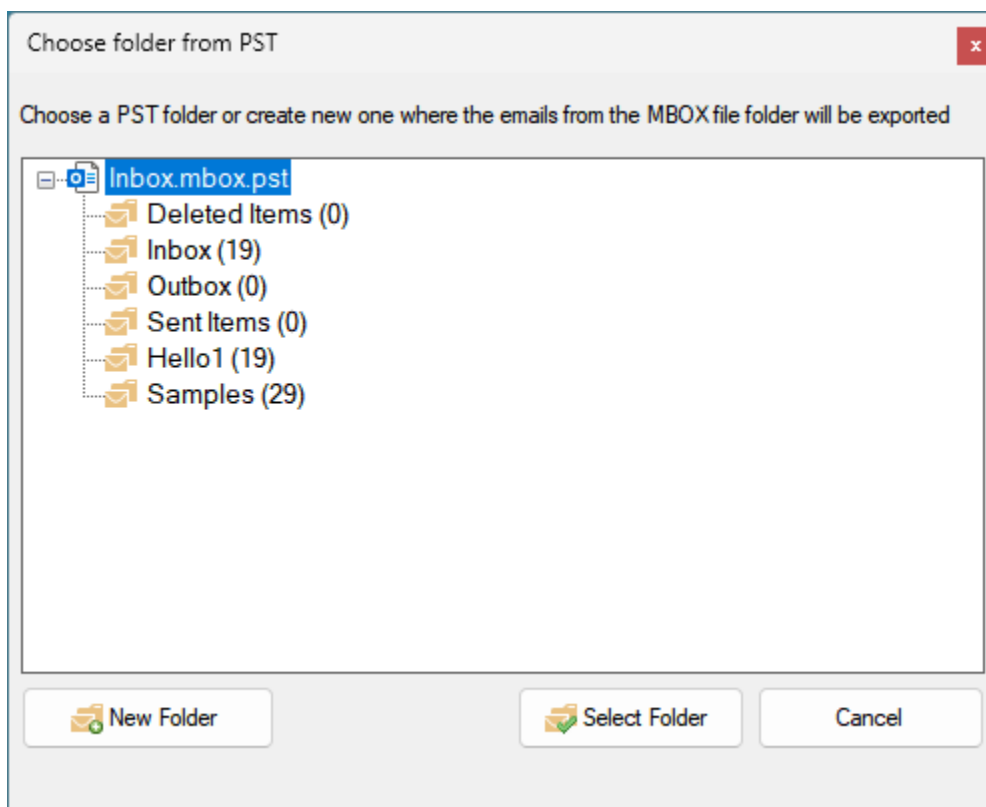
In this mode, you can perform bulk conversion of all the emails of each MBOX file present in a folder and its nested subfolders to a new or an existing PST file. Simply, click the 'Export to PST' button option just above the MBOX Folders tree-view control.



If you choose to export the MBOX files to a new PST file, the app will prompt you to specify a destination folder where a new PST file will be created.



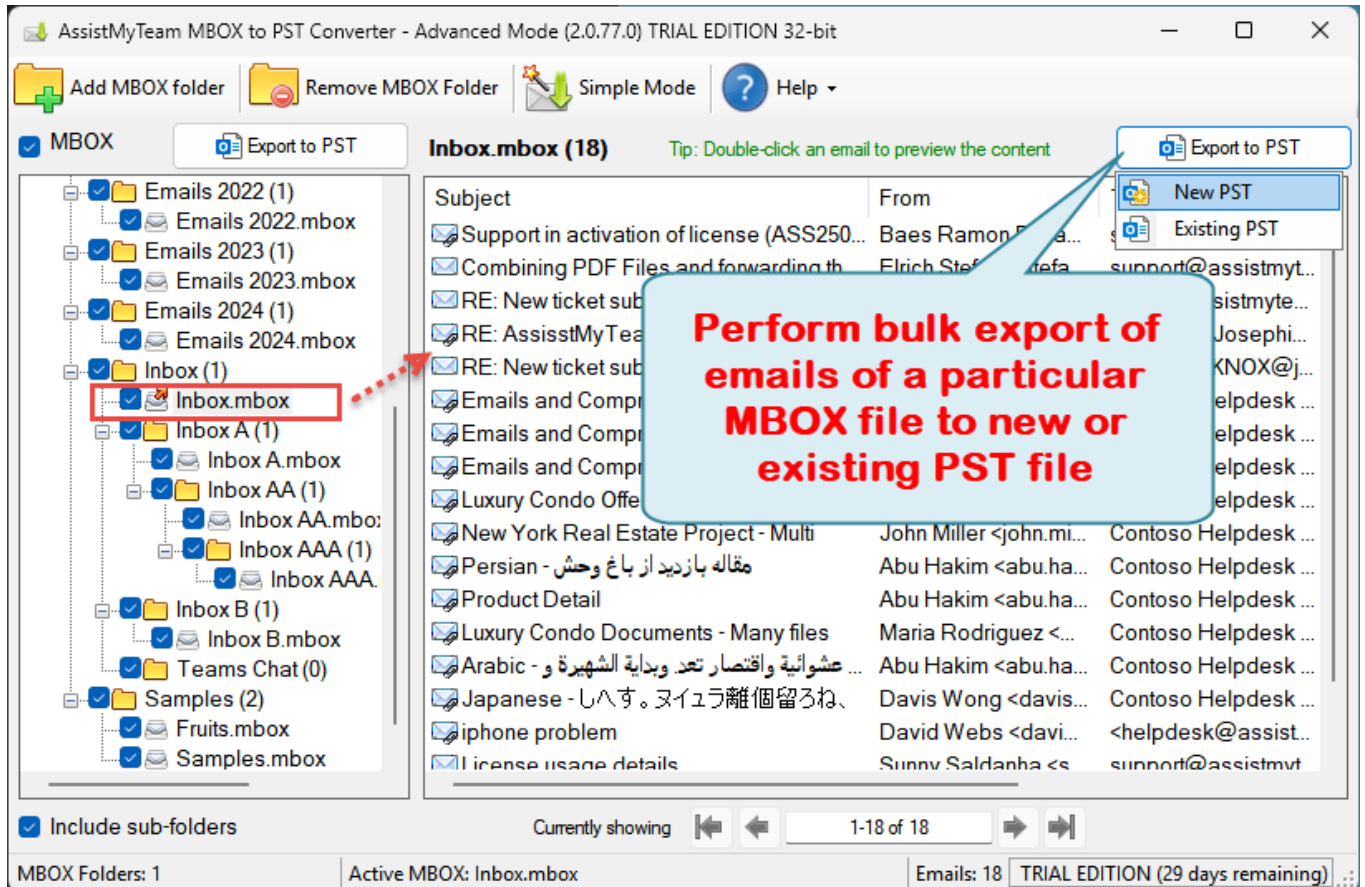
If you choose to export the MBOX files and folders to an existing PST file, you will be prompted to choose the particular PST file from your computer. And then the app will load and display the folders content of the chosen PST file in a prompt dialog box. And you can then choose a particular PST folder where all the MBOX files and folders will be exported to.



NOTE: The app will create new PST folders and subfolders similar to the hierarchy and structure of the nested MBOX sub folders of your computer. If these folders structure are already present (existing) in the chosen PST the app will re-use and direct the export of the MBOX files to these existing folders/subfolders.

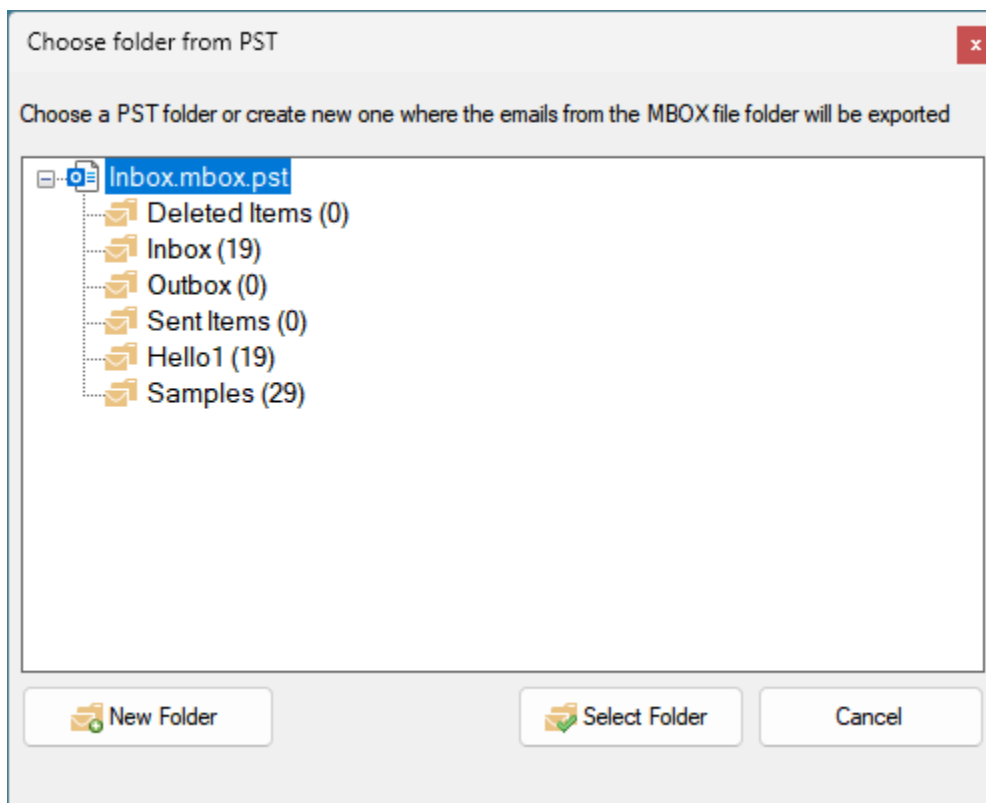
B. Export a particular MBOX file to new or existing PST (multiple export)

At times, what you may need is only to export all emails of a particular MBOX only, to a new or existing PST file. In such needs, you can perform the PST export by clicking the particular MBOX file from the MBOX tree-view control box on the left side. This will show you all the emails in the Emails view control on the right side. You can then proceed to click 'Export to PST' button, located on the extreme right corner of the folder view control.



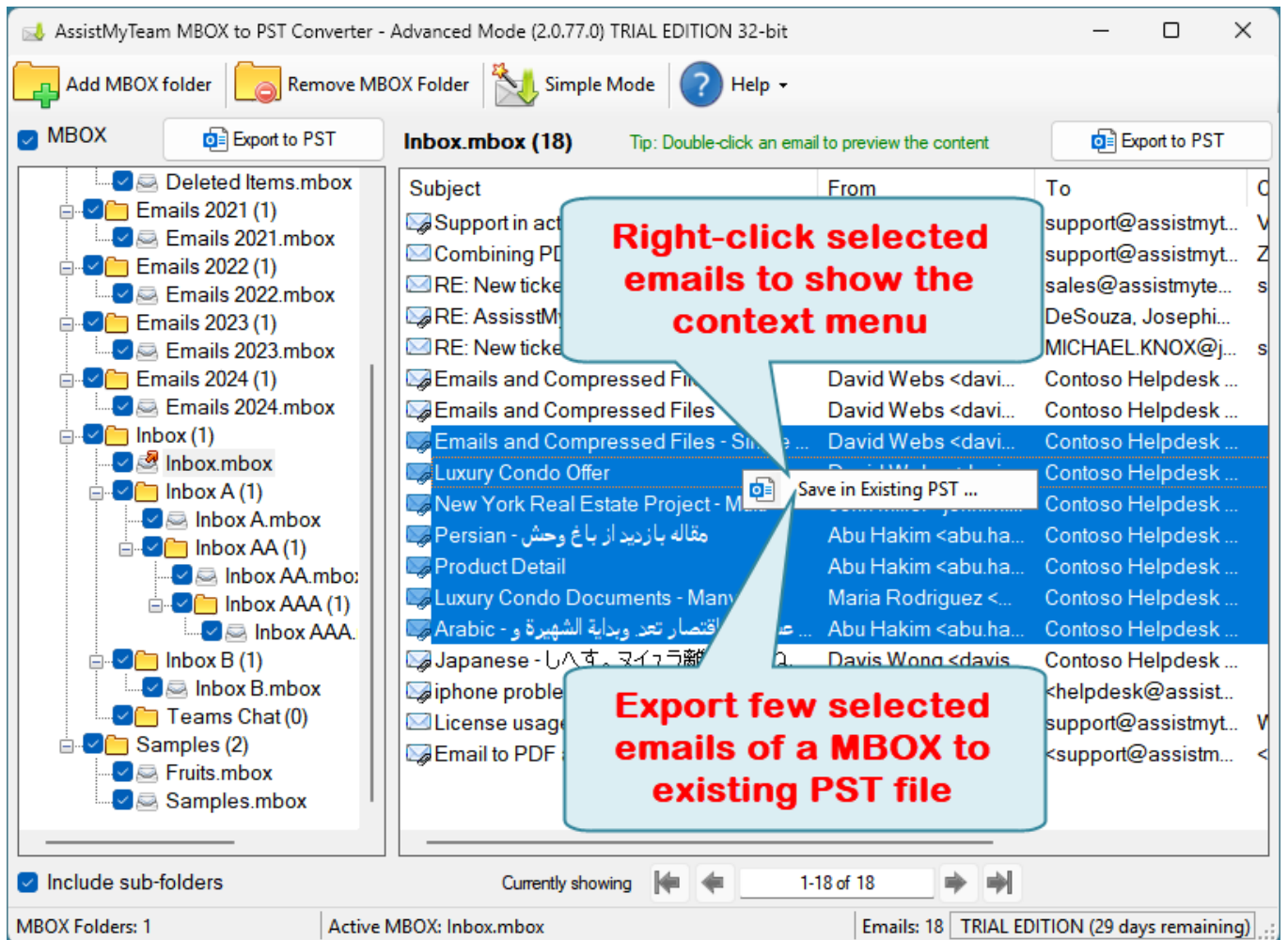
If you choose to export this particular MBOX file to a new PST file, the app will prompt you to specify a destination folder where a new PST file will be created.

If you choose to export the emails of this MBOX file to an existing PST file, you will be prompted to choose the particular PST file from your computer. And then the app will load and display the folders content of the chosen PST file in a prompt dialog box. And you can then choose a particular PST folder where all the emails of the MBOX file will be exported to.

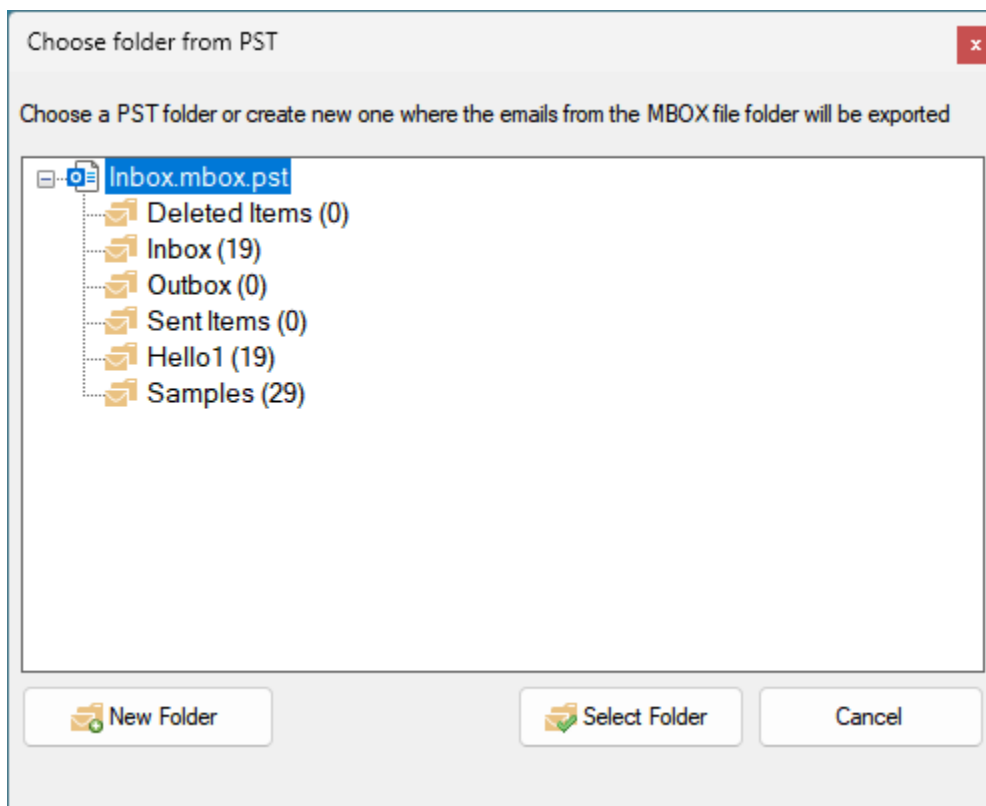


C. Export selected few emails within MBOX to an existing PST (multiple export)

If you are interested at exporting only a few selected emails of a MBOX file to an existing PST file, just right-click the selected emails from the email view and click 'Save in Existing PST' from the context menu.

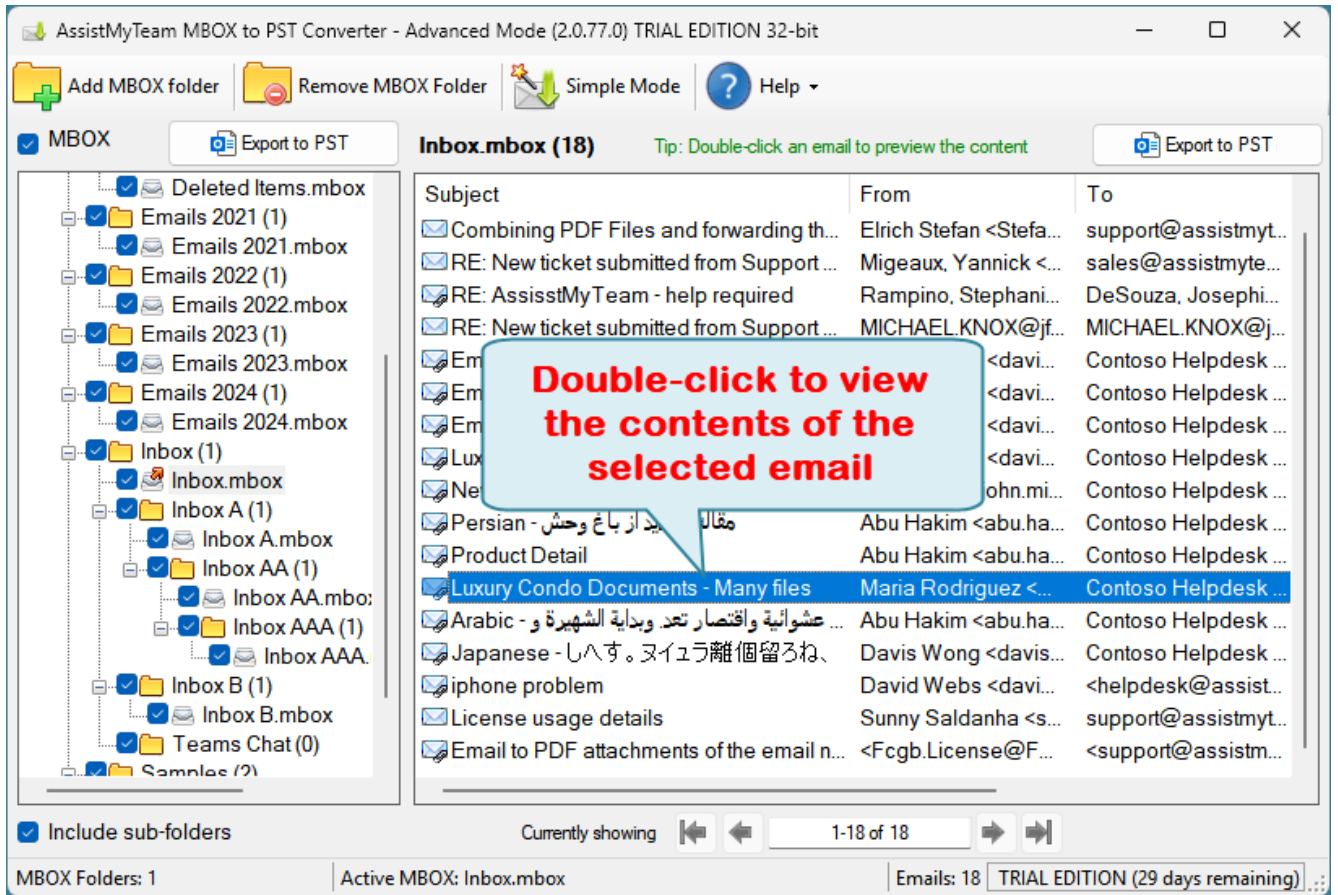


And you will be prompted to choose a PST file from your computer. And then the app will load and display the folders content of the chosen PST file in a prompt dialog box. And you can then choose a particular PST folder where the selected few emails of a MBOX file will be exported to.

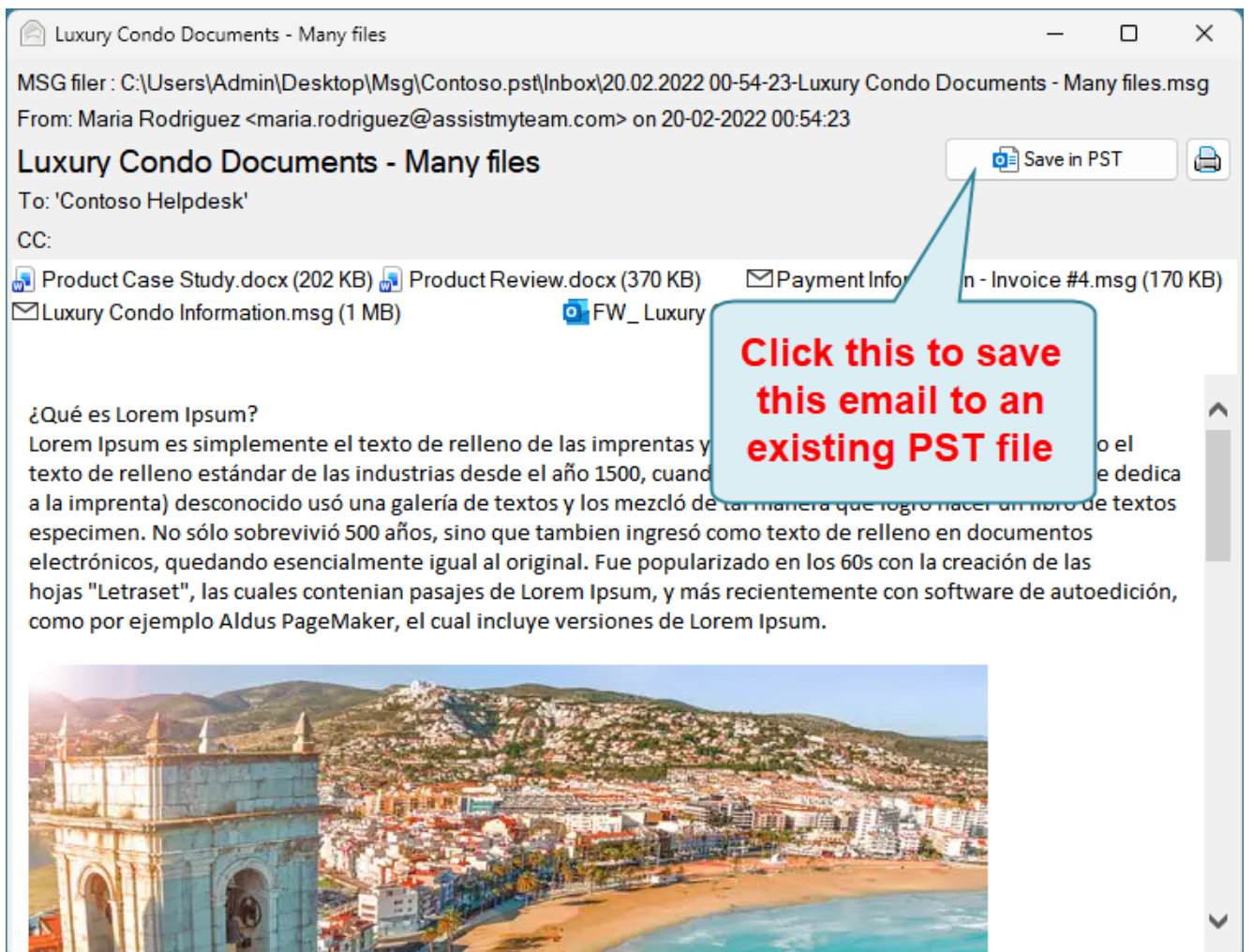


D. Export a particular email of MBOX to an existing PST (single conversion)

In this mode, you can choose a particular email in your MBOX file and save and export it to an existing PST file. To achieve this, preview an email of interest by double-clicking it from the list of all emails shown in the Email view control.



And then choose to save the previewed email to PST file by clicking the 'Save in PST' button located on the upper right side.



And you will be prompted to choose a PST file from your computer. And then the app will load and display the

folders content of the chosen PST file in a prompt dialog box. And you can then choose a particular PST folder where the previewed email of the MBOX file will be exported to.

