

V2

AssistMyTeam

MBOX to MSG Converter

Convert emails in MBOX to MSG files



Welcome to MBOX to MSG Converter

Convert and save emails from MBOX files to MSG files – all in a click.

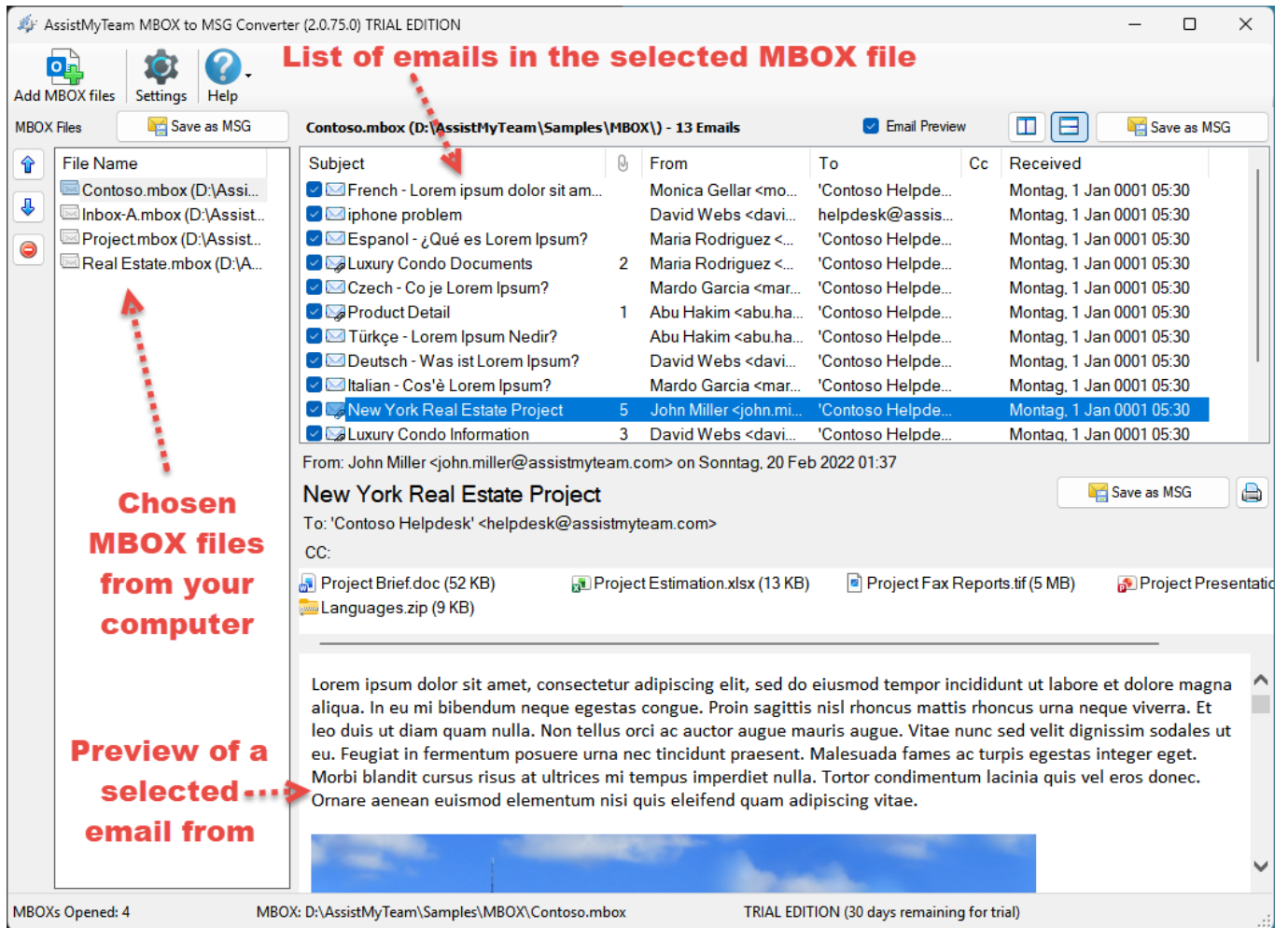
- Convert each MBOX email to MSG file with attachments.
- Bulk conversion of all emails in a MBOX to MSG files in a click.
- Read any version of MBOX created by any app.
- Different mode of conversion – single MBOX email to MSG, multiple emails of MBOX to MSGs, or whole MBOX into MSG files.
- Retains embedded images, attachments, metadata, and email attributes while exporting MBOX to MSG.

For a quick overview, refer to the [product website](#).

How It Works?

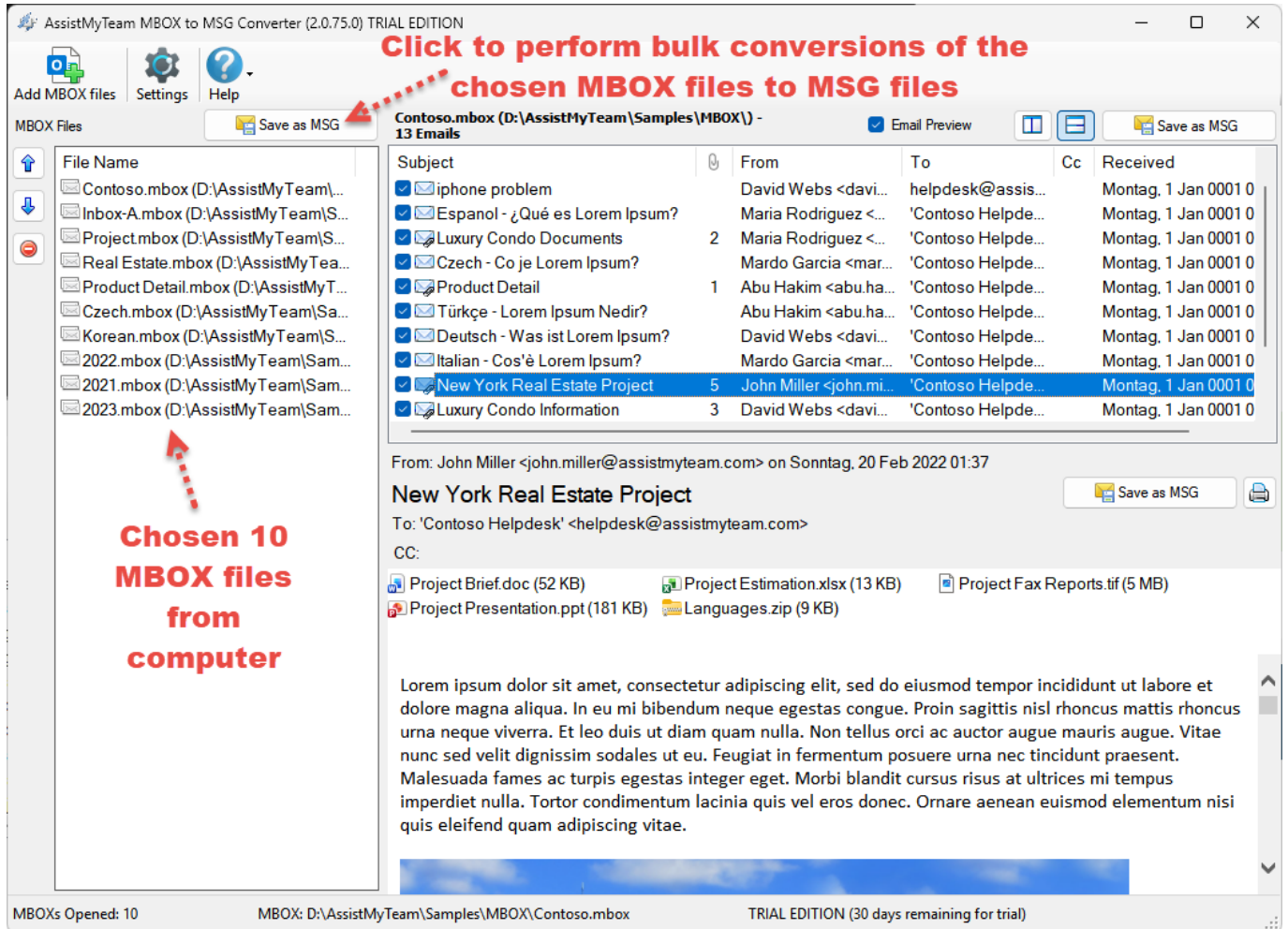
There are three ways to perform MSG conversion with AssistMyTeam MBOX to MSG Converter:

- A. All emails of multiple MBOX files to MSG
- B. All emails of a MBOX file to MSG
- C. Chosen Email of MBOX to MSG

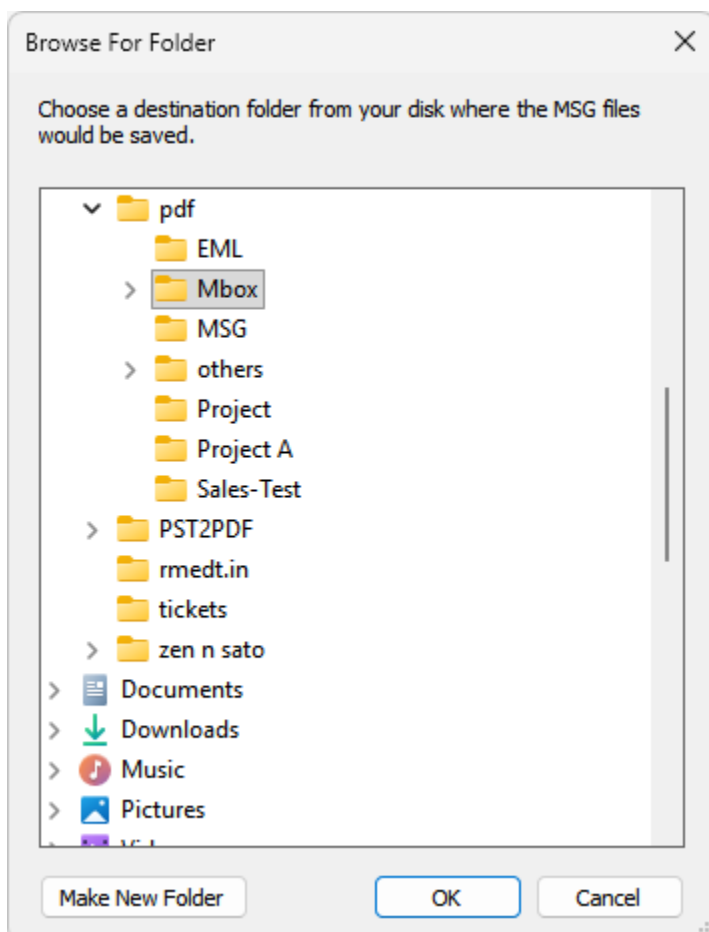


A. Convert multiple MBOXs to MSG (bulk conversion)

In this mode, you can perform bulk conversion of the emails from all the chosen MBOX files to MSG file. Simply, click the 'Save as MSG' button as illustrated below.

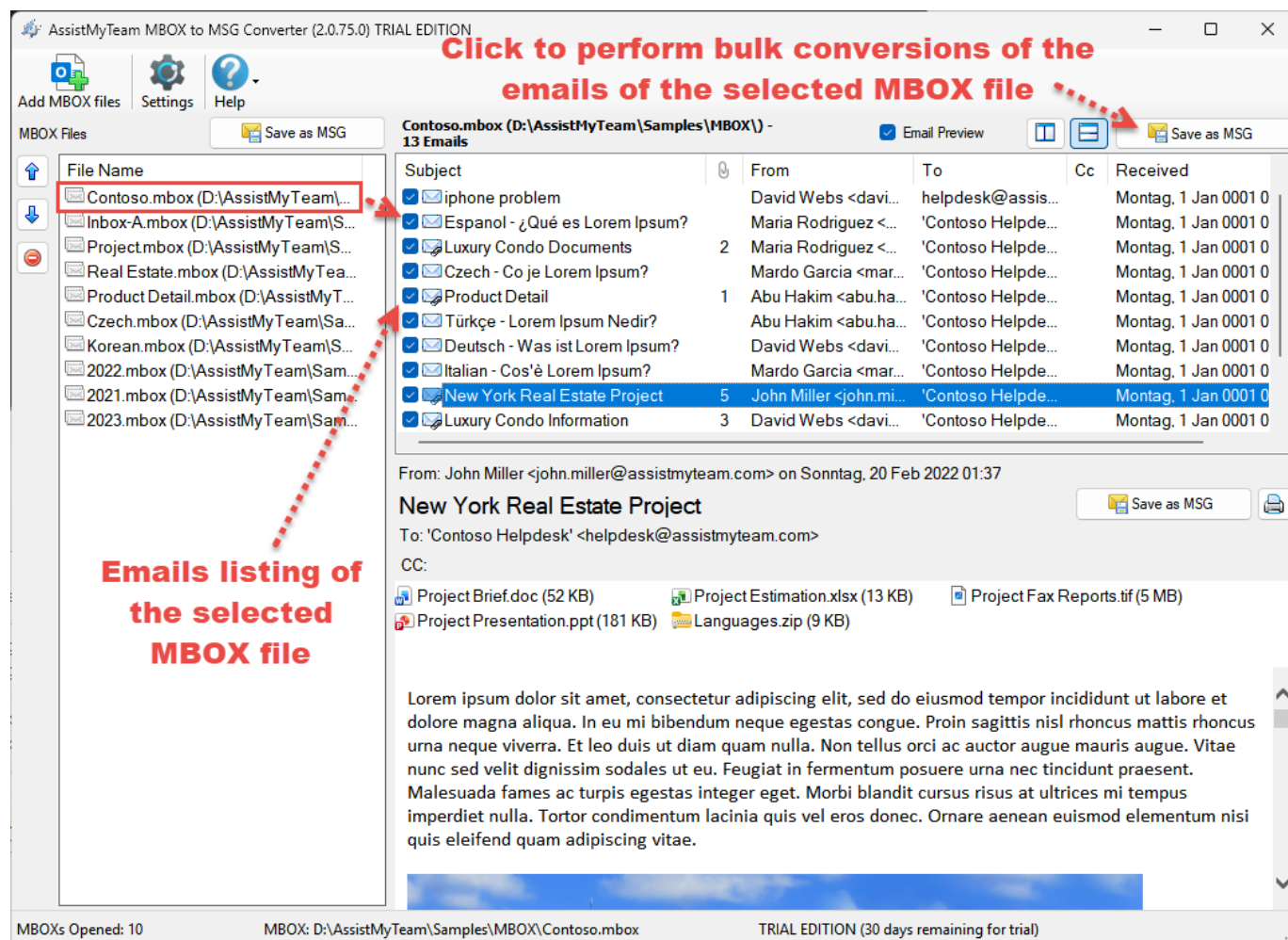


From the 'Browse for Folder' dialog box, choose a destination folder where the emails from each MBOX file will be exported as MSG files.

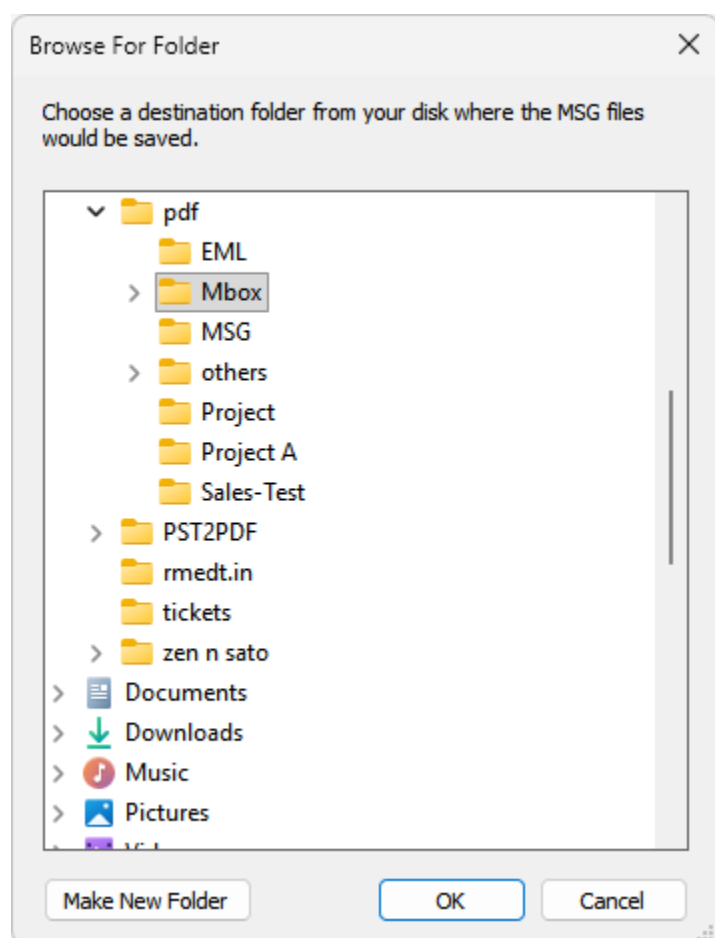


B. Convert Emails of a MBOX to MSG (multiple conversion)

To convert emails of a MBOX, select the particular MBOX file from the list control box on the left side. This will show you all the emails of the selected MBOX in the upper right side. Click 'Save as MSG' button located on the extreme right corner.

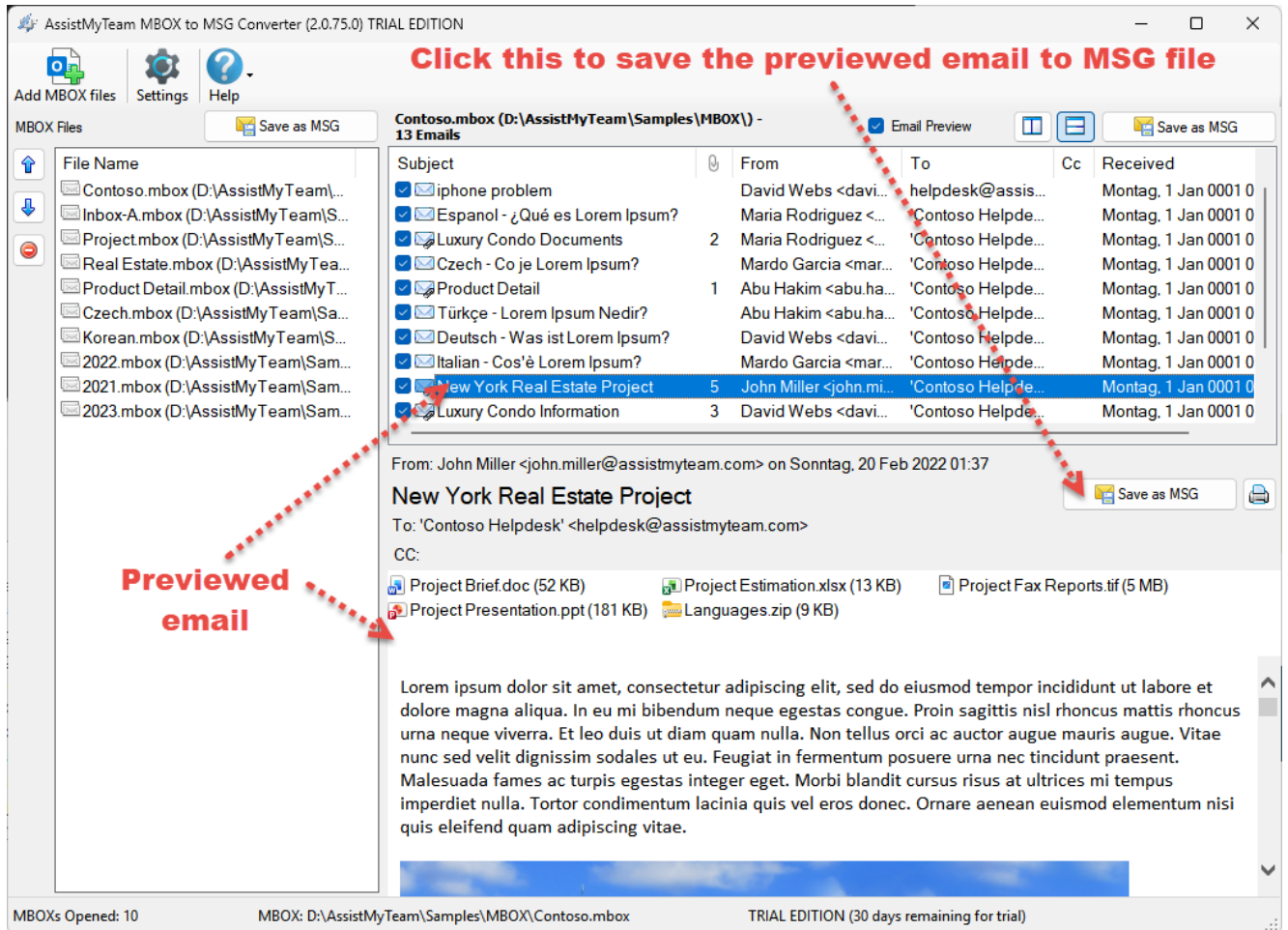


From the 'Browse for Folder' dialog box, specify a destination where the MSG files of the selected MBOX file will be saved.



C. Convert a particular email in MBOX to MSG (single conversion)

In this mode, you can save an email from the MBOX to MSG. To achieve this, select the particular email from the MBOX view control to load it in the preview control. And then click the 'Save as MSG' button located in the upper side of this preview control.



From the 'Save as MSG' dialog box, enter the name of the MSG file that will be saved to the chosen destination folder.