

V2

AssistMyTeam

MBOX to EML Converter

Convert emails in MBOX to EML files



Welcome to MBOX to EML Converter

Convert and save emails from MBOX files to EML files – all in a click.

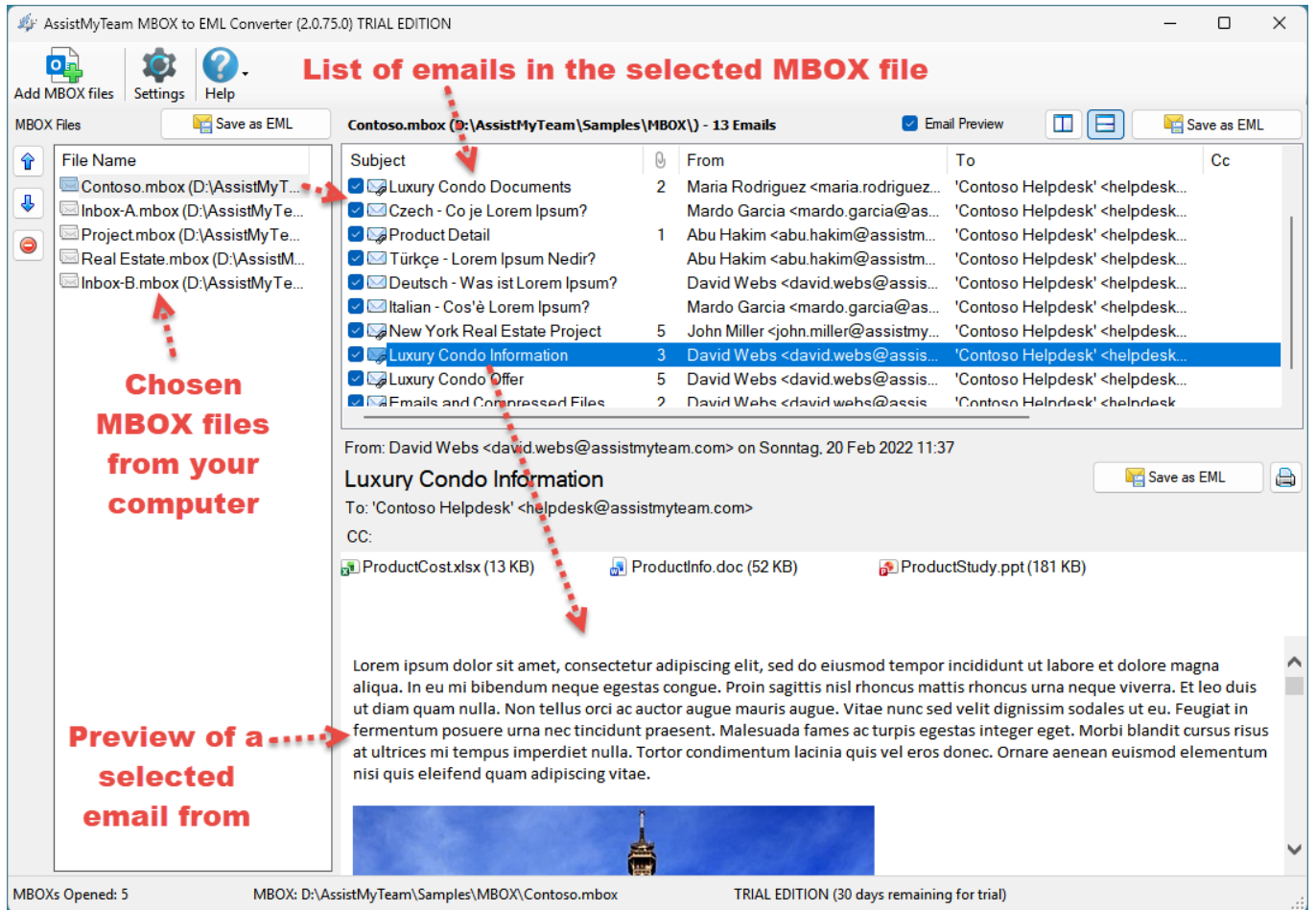
- Convert each MBOX email to EML file with attachments.
- Bulk conversion of all emails in a MBOX to EML files in a click.
- Read any version of MBOX created by any app.
- Different mode of conversion – single MBOX email to EML, multiple emails of MBOX to EMLs, or whole MBOX into EML files.
- Retains embedded images, attachments, metadata, and email attributes while exporting MBOX to EML.

For a quick overview, refer to the [product website](#).

How It Works?

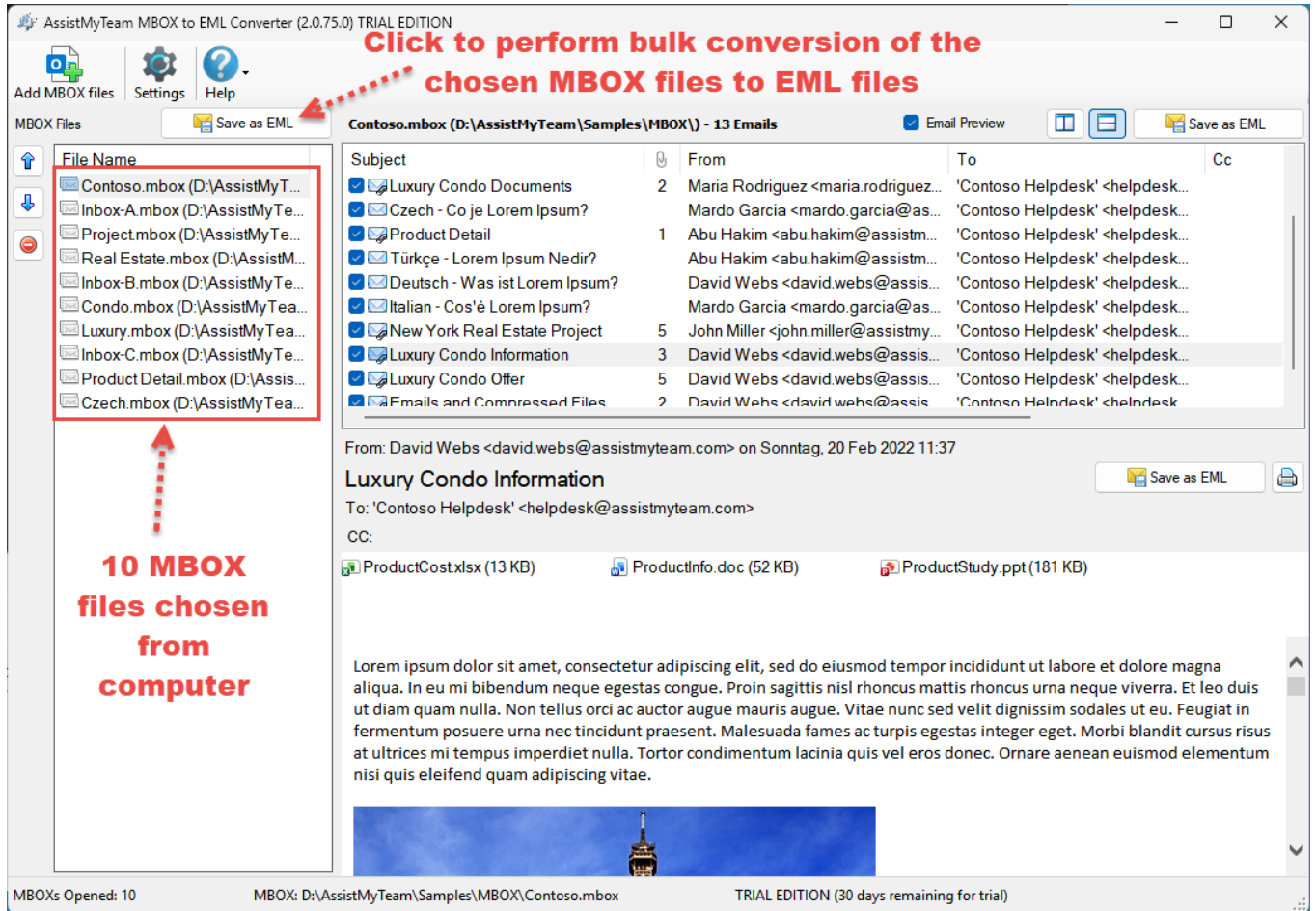
There are three ways to perform EML conversion with AssistMyTeam MBOX to EML Converter:

- A. All emails of multiple MBOX files to EML
- B. All emails of a MBOX file to EML
- C. Chosen Email of MBOX to EML

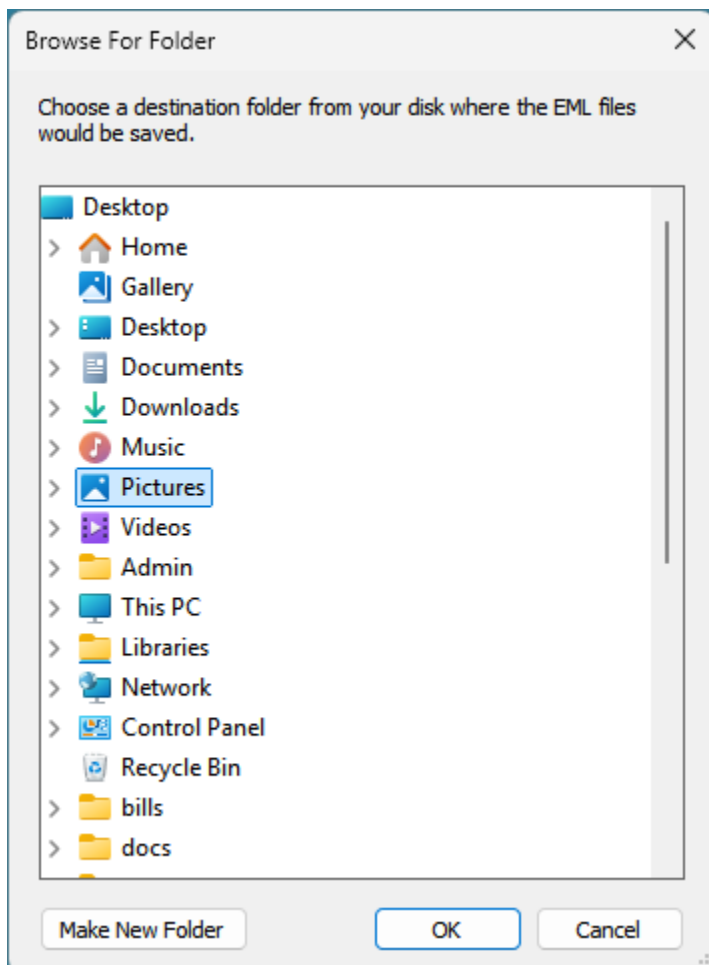


A. Convert multiple MBOXs to EML (bulk conversion)

In this mode, you can perform bulk conversion of the emails from all the chosen MBOX files to EML file. Simply, click the 'Save as EML' button as illustrated below.

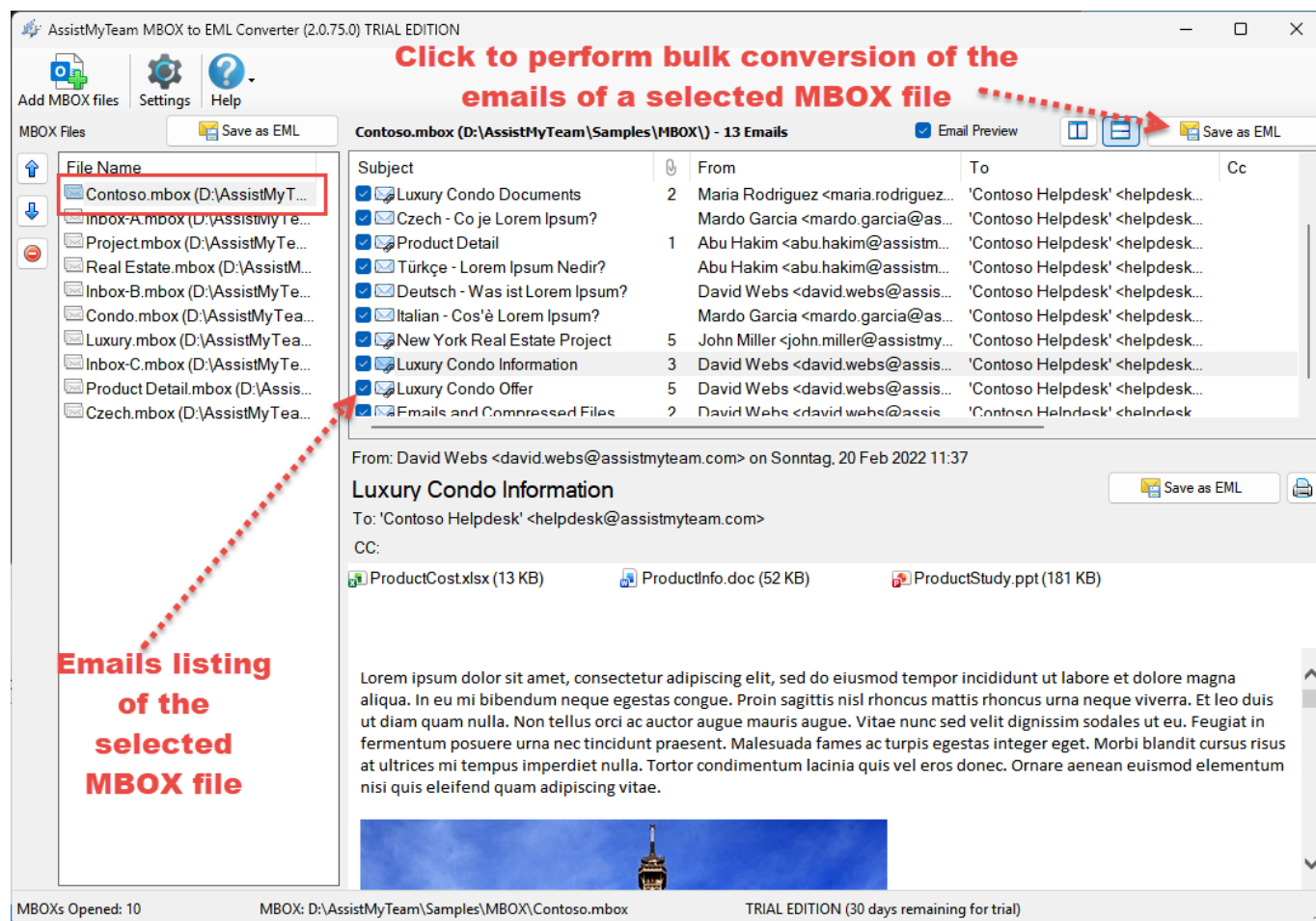


From the 'Browse for Folder' dialog box, choose a destination folder where the emails from each MBOX file will be exported as EML files.

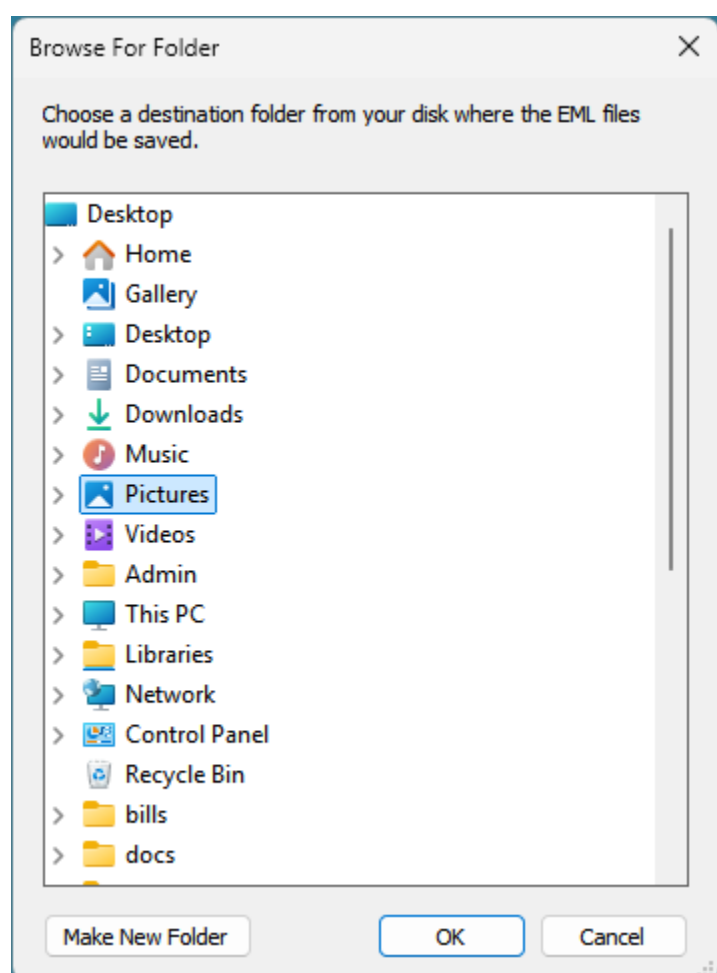


B. Convert Emails of a MBOX to EML (multiple conversion)

To convert emails of a MBOX, select the particular MBOX file from the list control box on the left side. This will show you all the emails of the selected MBOX in the upper right side. Click 'Save as EML' button located on the extreme right corner.

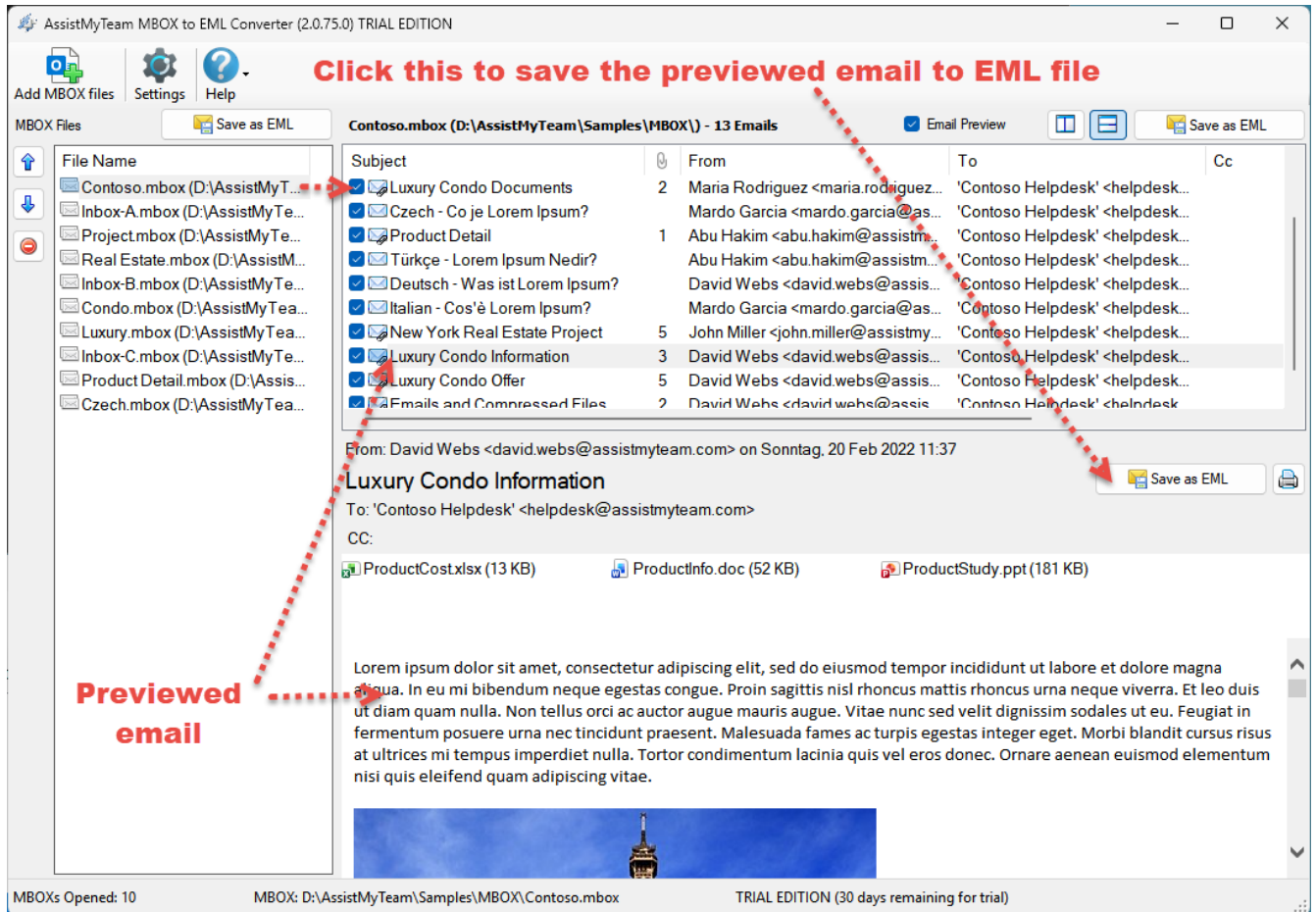


From the 'Browse for Folder' dialog box, specify a destination where the EML files of the selected MBOX file will be saved.



C. Convert a particular email in MBOX to EML (single conversion)

In this mode, you can save an email from the MBOX to EML. To achieve this, select the particular email from the MBOX view control to load it in the preview control. And then click the 'Save as EML' button located in the upper side of this preview control.



From the 'Save as EML' dialog box, enter the name of the EML file that will be saved to the chosen destination folder.