

V2

AssistMyTeam

IMAP to PST Converter

Export emails from IMAP to PST files



Welcome to IMAP to PST Converter

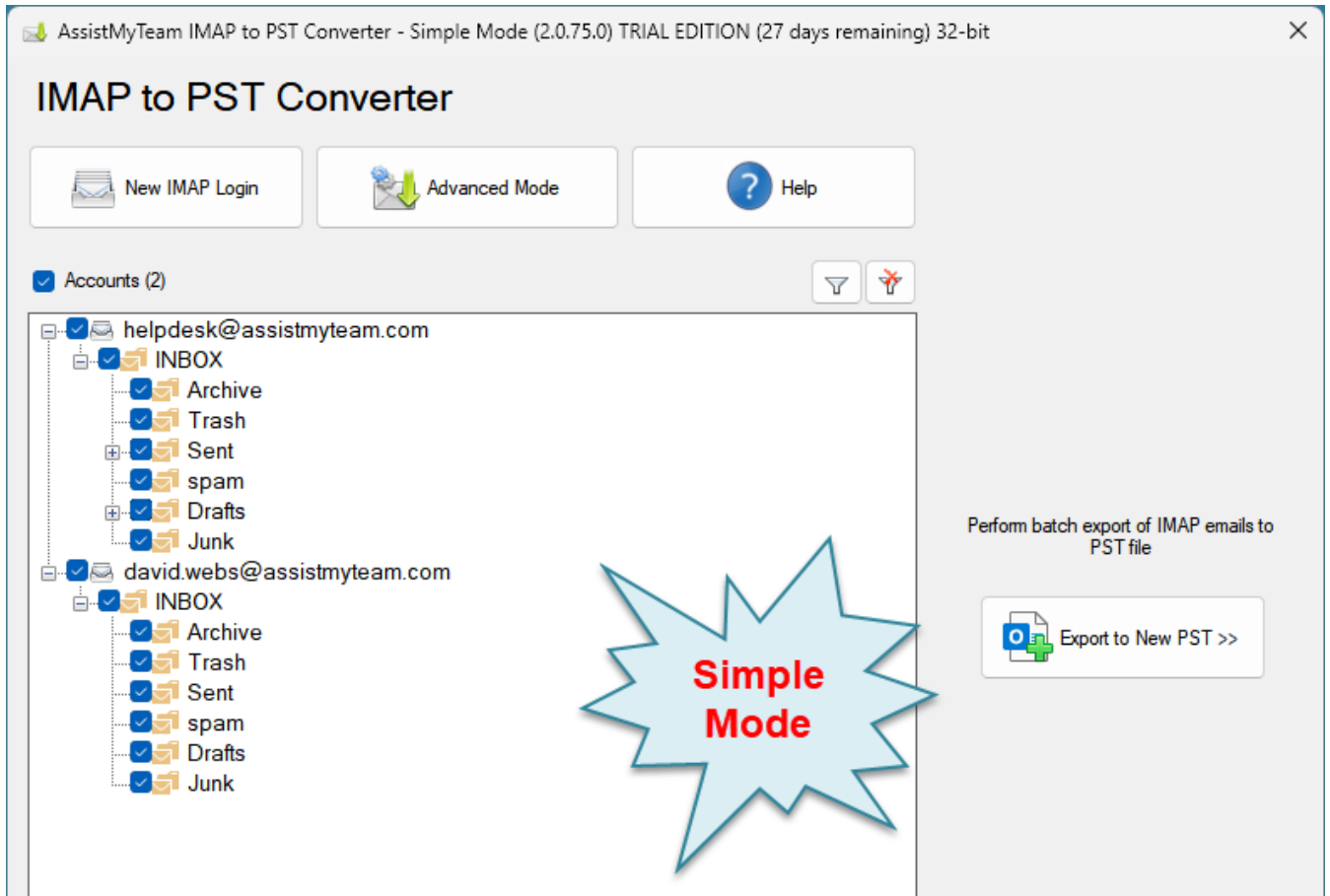
Convert emails and folders from IMAP Accounts to PST files, while preserving the folder structure and hierarchy – all in a click.

- Export emails from IMAP accounts to PST.
- Bulk extract email file attachments to a location on your hard drive.
- Use keywords and filters to search and find specific emails of importance before exporting to PST files.
- Different mode of conversion – single email to PST, multiple emails to PSTs, IMAP folder or whole IMAP Account into PSTs.
- Maintains original email folders structure of IMAP accounts in the PST.
- Retains embedded images, attachments, metadata, and email attributes while exporting IMAP to PST.
- Special MSI installer available for enterprise-wide deployment*
- Support Windows 11, 10, 8, 7 and Windows Servers

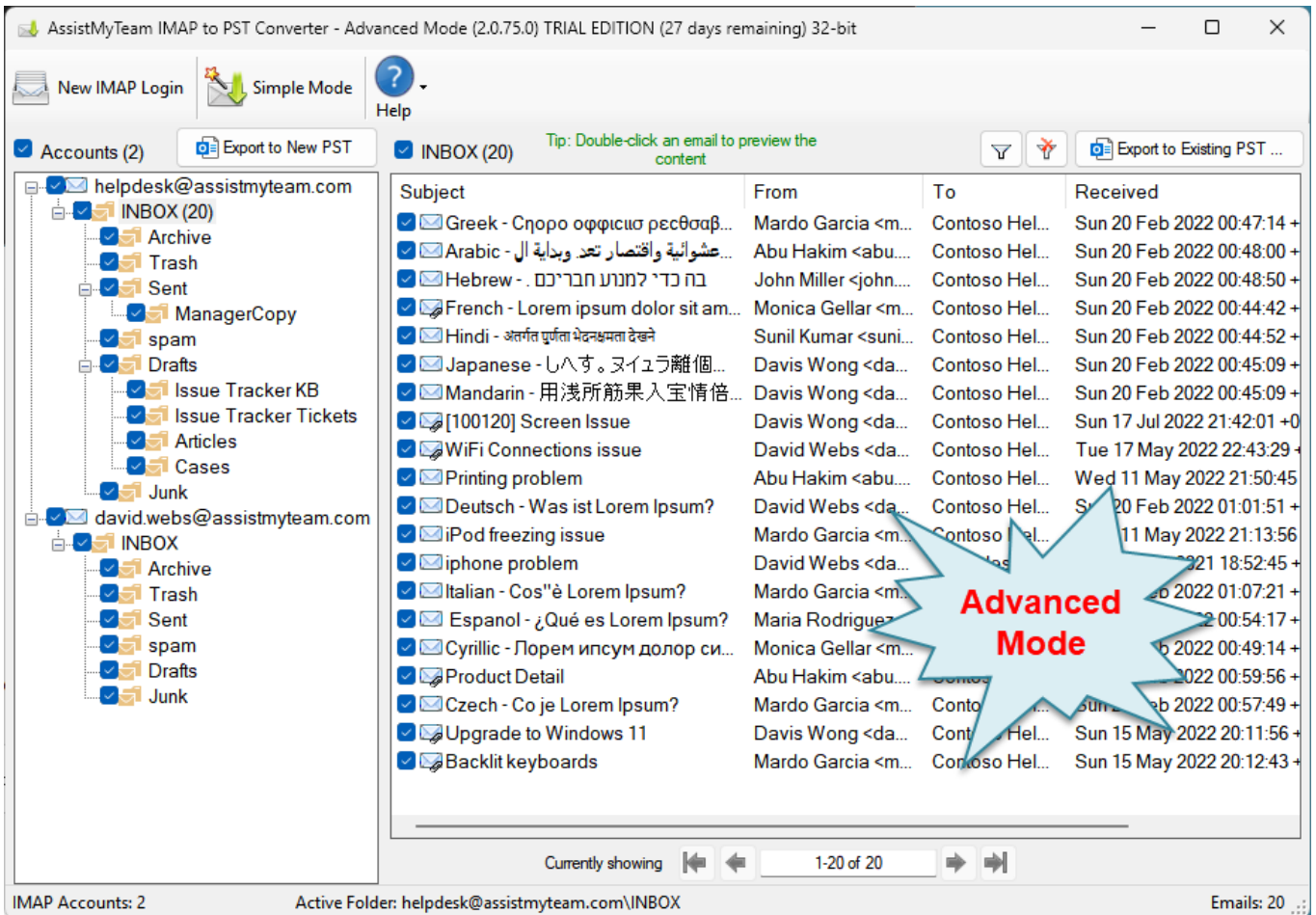
For a quick overview, refer to the [product website](#).

How It Works?

AssistMyTeam IMAP to PST Converter can operate in two modes – **Simple** (default) and **Advanced**, which has an interactive user interface with many options to export emails to PST documents.



IMAP to PST Converter – Simple Mode



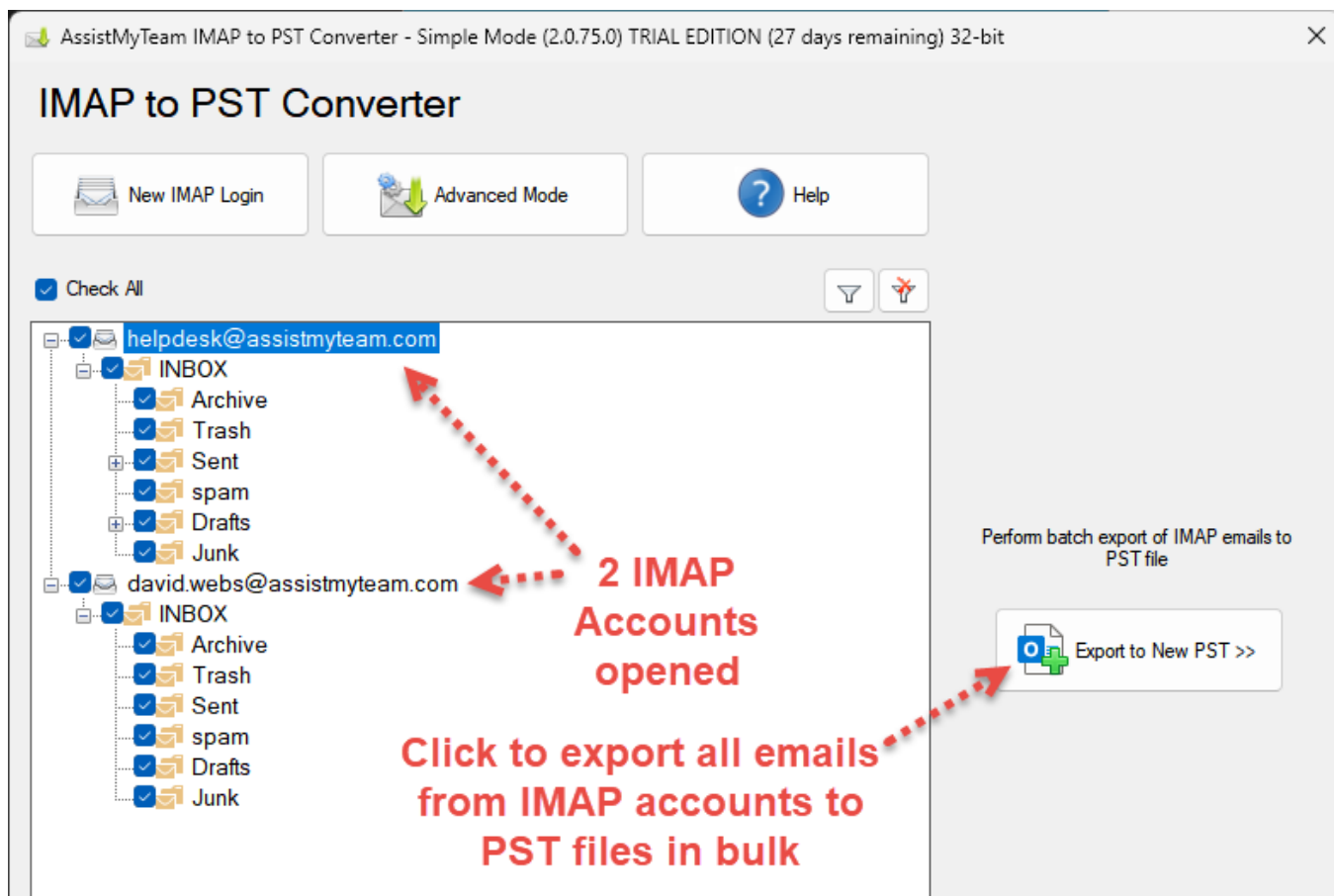
IMAP to PST Converter – Advanced Mode

There are three ways to perform export to PST with AssistMyTeam IMAP to PST Converter:

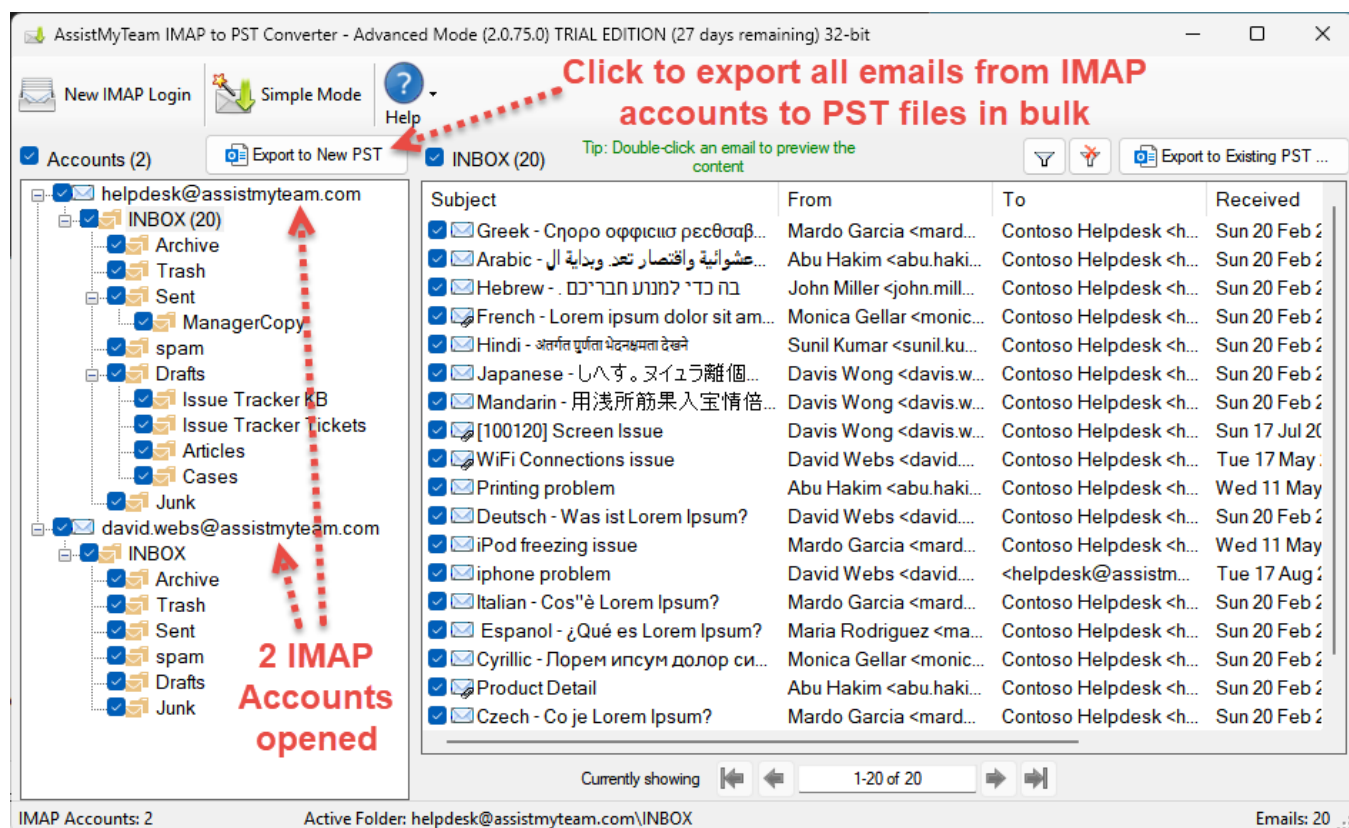
- A. Whole IMAP to PST
- B. Chosen IMAP Folder to PST
- C. Chosen Email to PST

A. Convert whole IMAP Accounts to PST (bulk conversion)

In this mode, you can perform bulk conversion of the whole contents of each IMAP account to PST format. Simply, click the 'Export to New PST' button option just above the IMAP tree-view control.

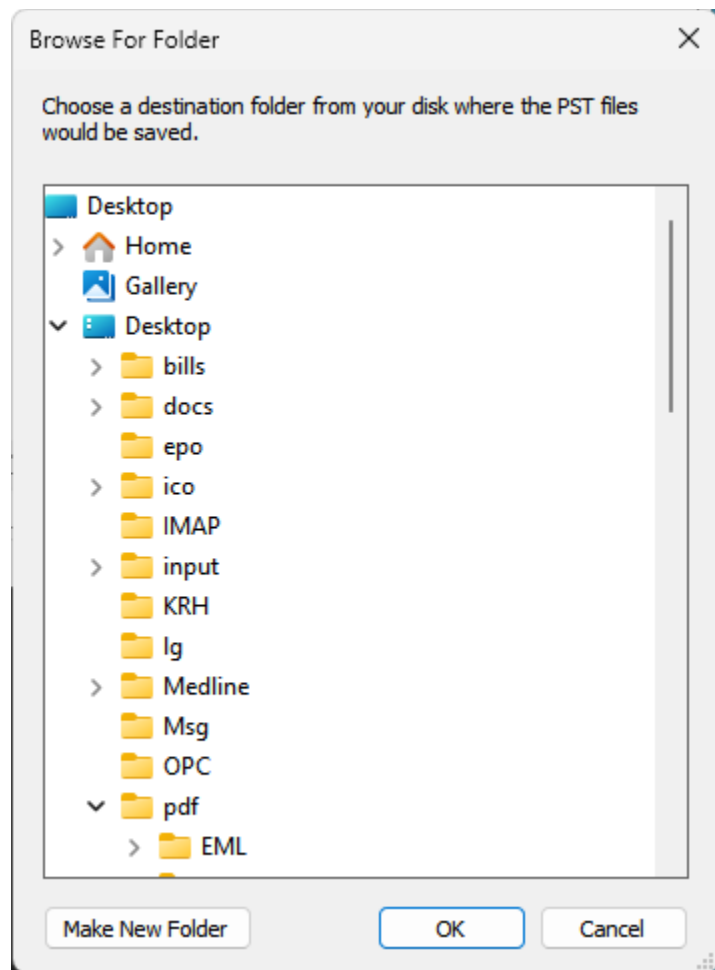


Bulk PST Conversion in Simple Mode



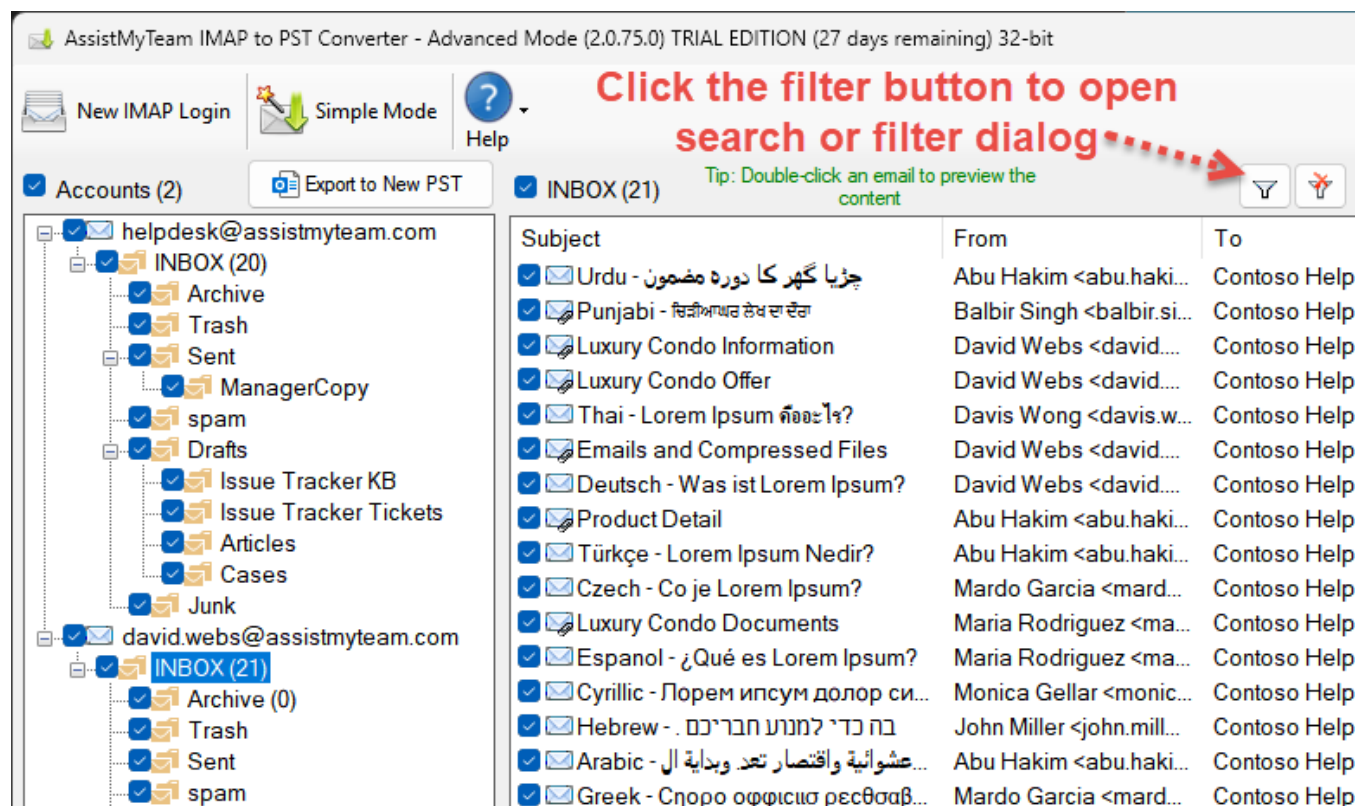
Bulk PST Conversion in Advanced Mode

From the **'Browse for Folder'** dialog box, choose a destination folder where the emails from each IMAP account will be exported as PST files. The folders hierarchy of the IMAP account will be replicated in the PST files, for easy access and use.



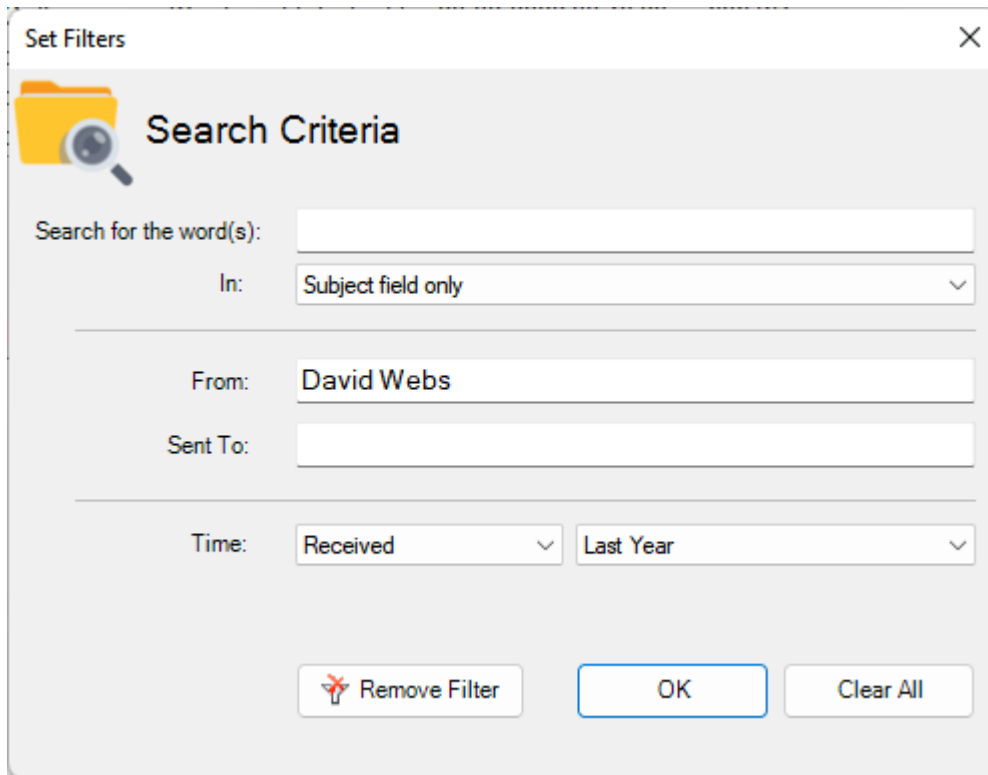
Apply keywords search and filters

You can choose to perform a keyword search and apply filters and only perform the bulk conversions of those emails in the IMAP account that fulfil the search parameters to PST. To do that, click the **'Filter'** button available on top of the IMAP tree-view control box.

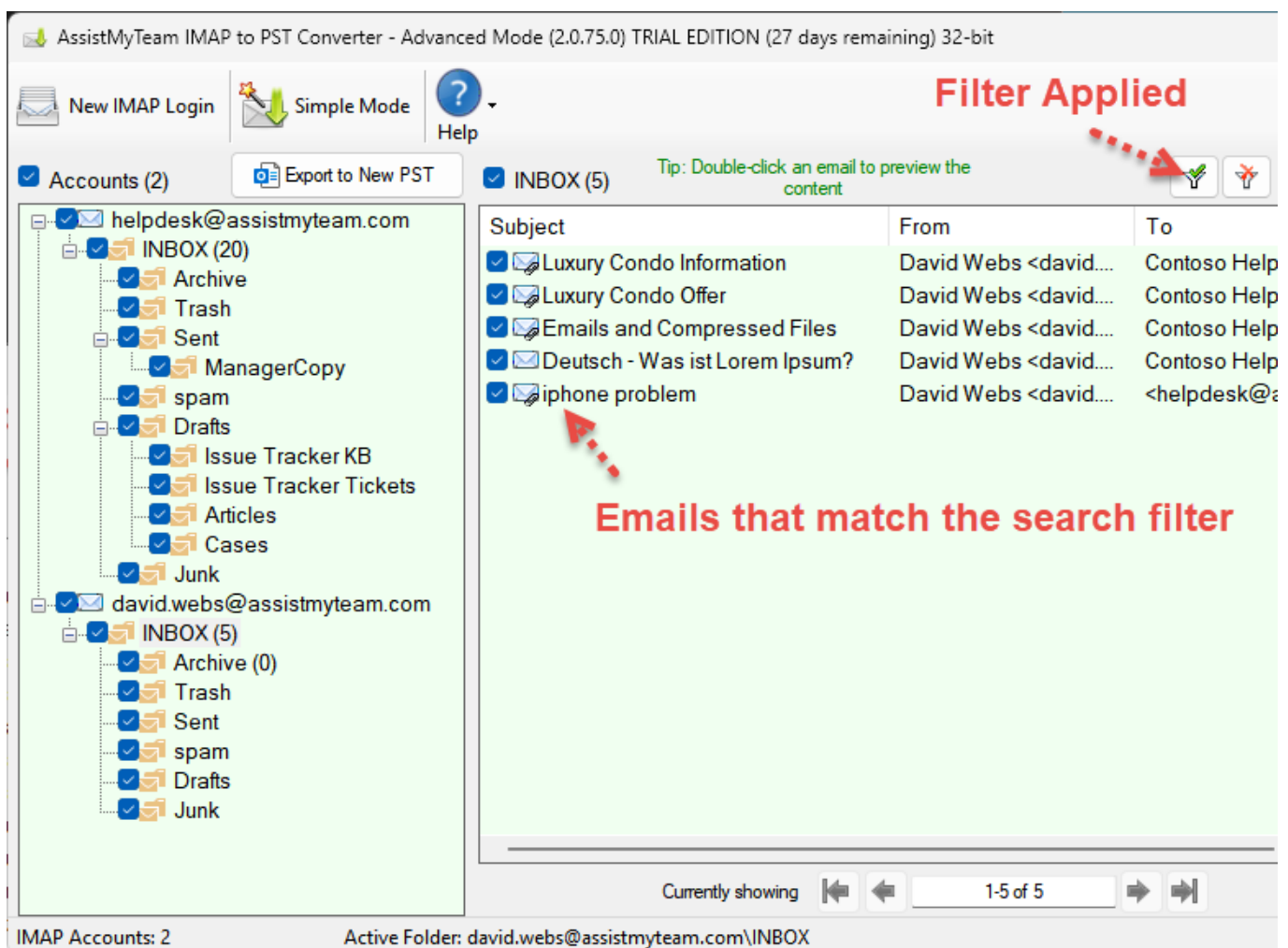


A dialog box for the search pop ups enabling you to input keywords search in the subject or body or both. You can also filter the emails by matching the sender in the **'From'** field and/or the recipient in

the 'To' field. Additionally, you can specify a time duration to restrict the emails that fall between the start and end date.

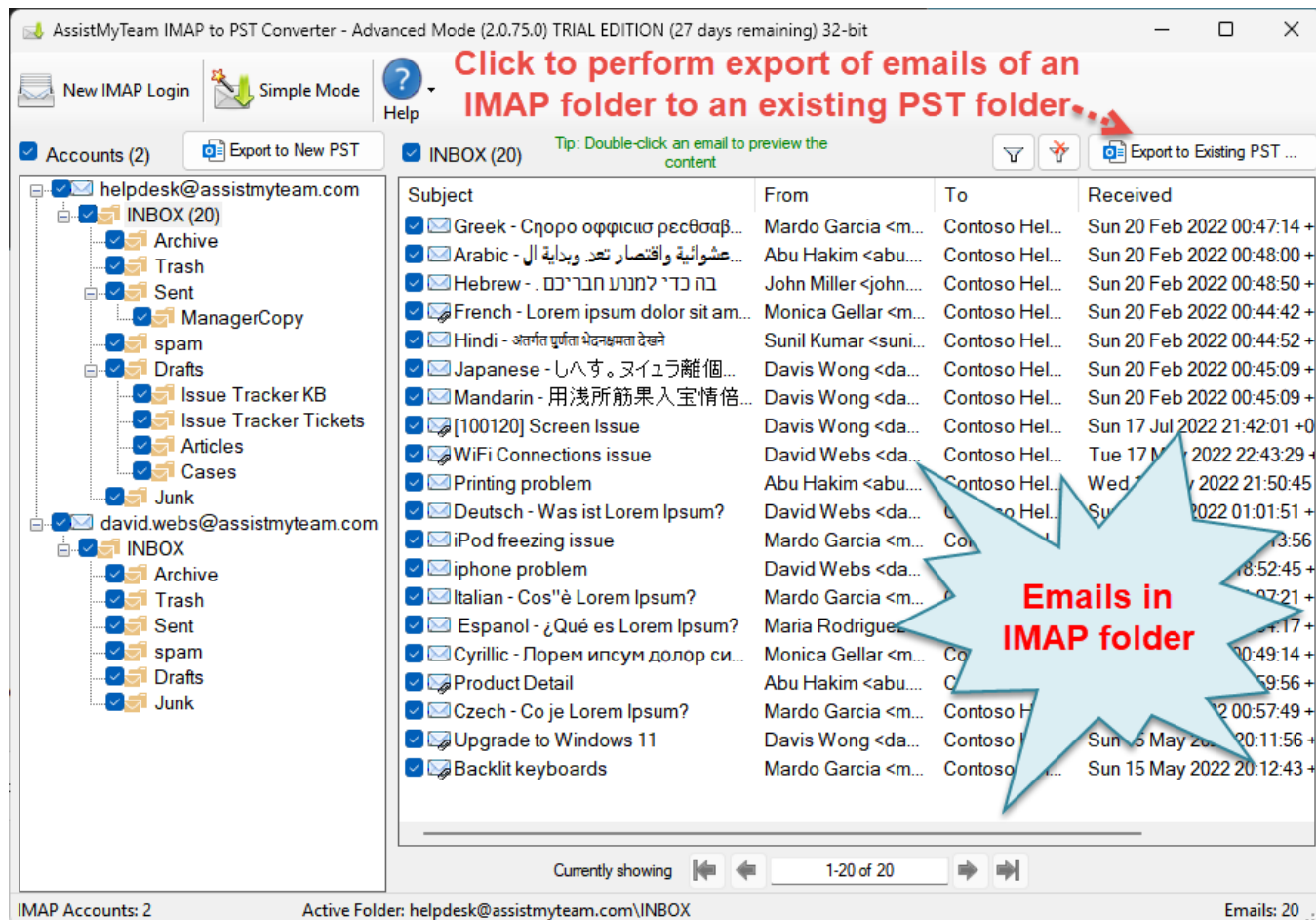


After applying the filters, the filter icon will change with a green tick mark, and the background colour of the emails container box will also be in green.

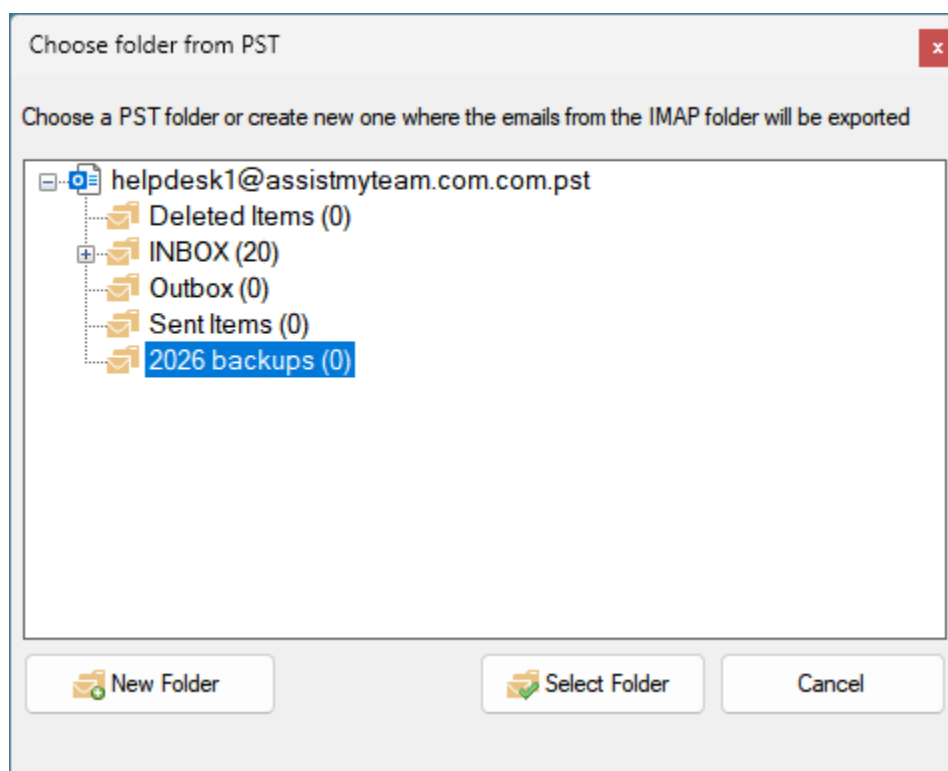


B. Convert Multiple Emails of an IMAP folder to PST

At times, what you may need is only to export emails of a particular folder within the IMAP account. In such needs, you can perform the export by clicking the particular folder from the IMAP folders tree-view control box on the left side. This will show you all the emails in the folder view control on the right side. You can then proceed to click 'Export to Existing PST' button located on the extreme right corner of the folder view control.

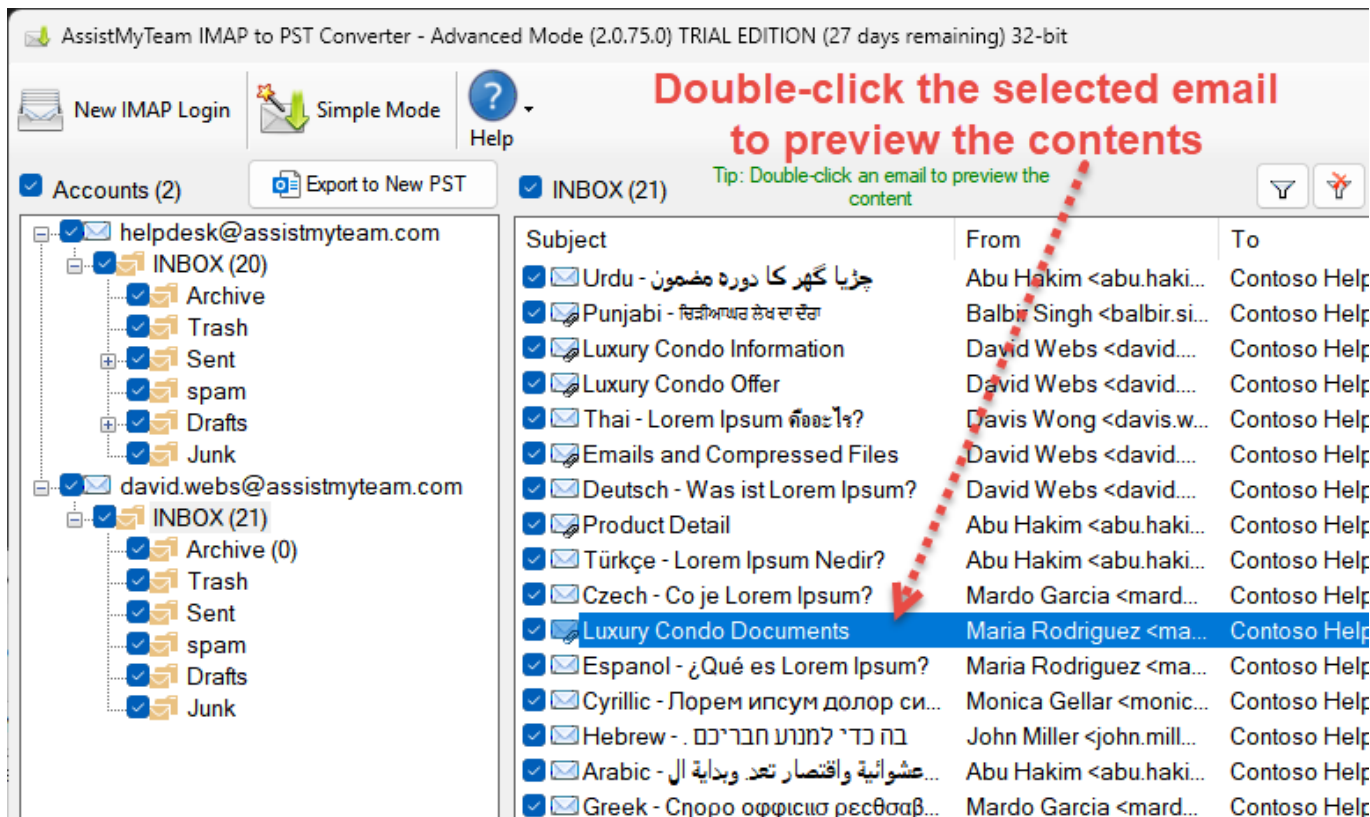


From the 'Choose folder from PST' dialog box, choose a folder of your existing PST file, where the selected/checked emails of the particular IMAP folder will be exported.



C. Convert a particular email of an IMAP Account to PST

In this mode, you can selectively choose an email in the IMAP account and save it to an existing PST.



To achieve this, preview an email of interest by double-clicking it from the list of all emails shown in the folder view. And then choose to save the previewed email to an existing PST by clicking the 'Export to Existing PST' button located on the upper right side.

