

V2

AssistMyTeam

IMAP to MBOX Converter

Export emails from IMAP accounts to MBOX files



Welcome to IMAP to MBOX Converter

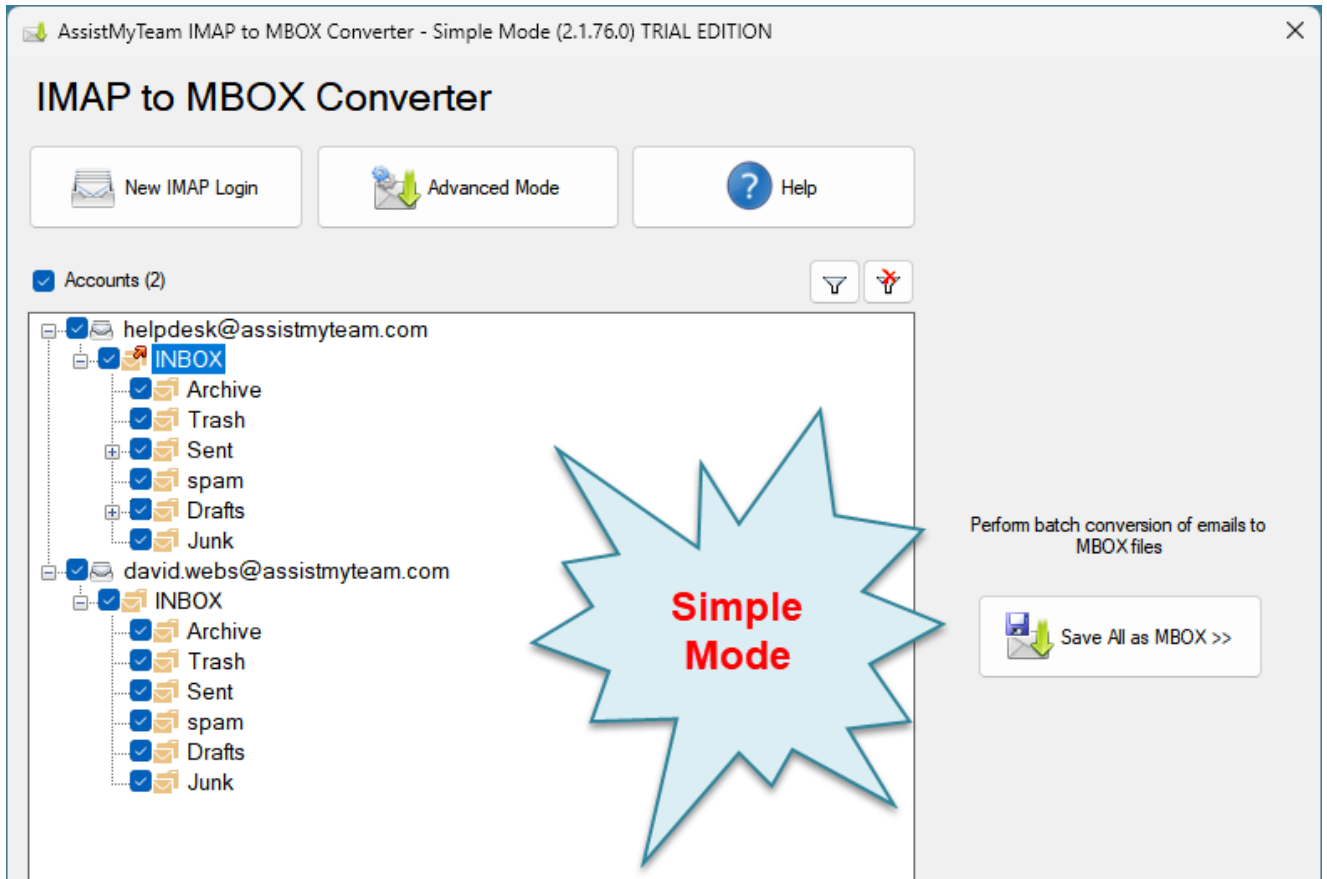
Convert and save emails, attachments, folders from IMAP accounts to MBOX files, while preserving the folder structure and hierarchy – all in a click.

- Convert emails of your Inbox and folders to MBOX files.
- Bulk extract email file attachments to a location on your hard drive.
- Use keywords and filters to search and find specific emails of importance before converting to MBOX files.
- Different mode of export –single email to existing MBOX, multiple emails to existing MBOX, whole folder or IMAP account into MBOXs.
- Retains embedded images, attachments, metadata, and mail attributes while exporting emails from IMAP accounts to MBOX.
- Backup email messages for regulatory or legal compliance.
- Automatically enforce consistent naming convention to replicated MBOX files.
- Retain the same original folders structure of your IMAP mailboxes in the disk for easy access, sharing and filing.
- All conversions and processing performed locally. Ideal for closed systems.
- Special MSI installer available for enterprise-wide deployment*.
- Support Windows 11, 10, 8, 7 and Windows Servers.

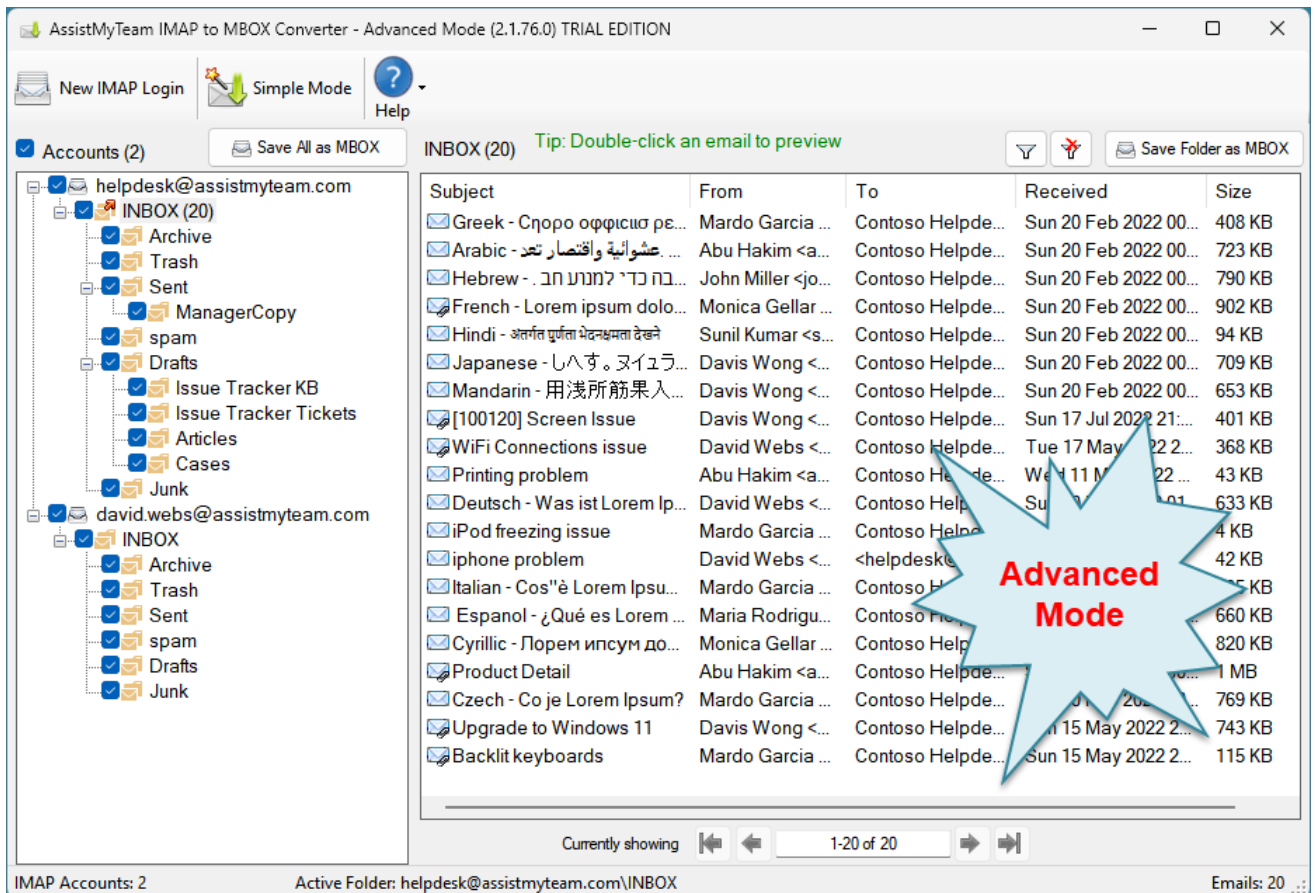
For a quick overview, refer to the [product website](#).

How It Works?

AssistMyTeam IMAP to MBOX Converter can operate in two modes – **Simple** (default) and **Advanced**, which has an interactive user interface with many options to export emails to MBOX.



IMAP to MBOX Converter – Simple Mode

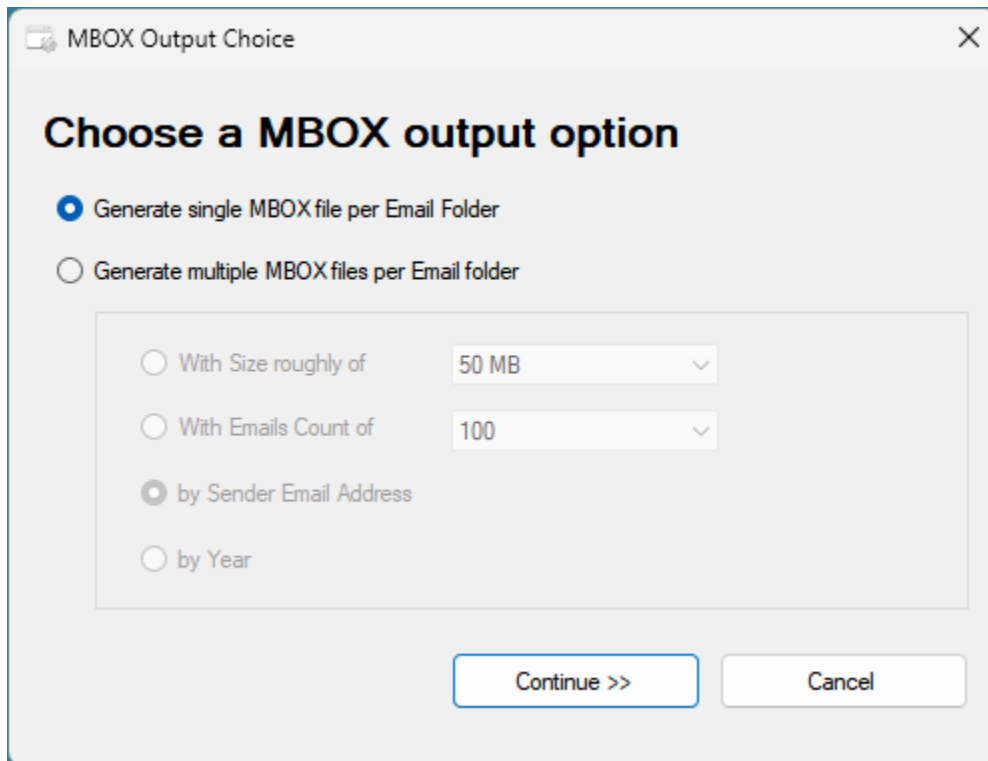


IMAP to MBOX Converter – Advanced Mode

There are three ways to perform MBOX conversion with IMAP to MBOX Converter:

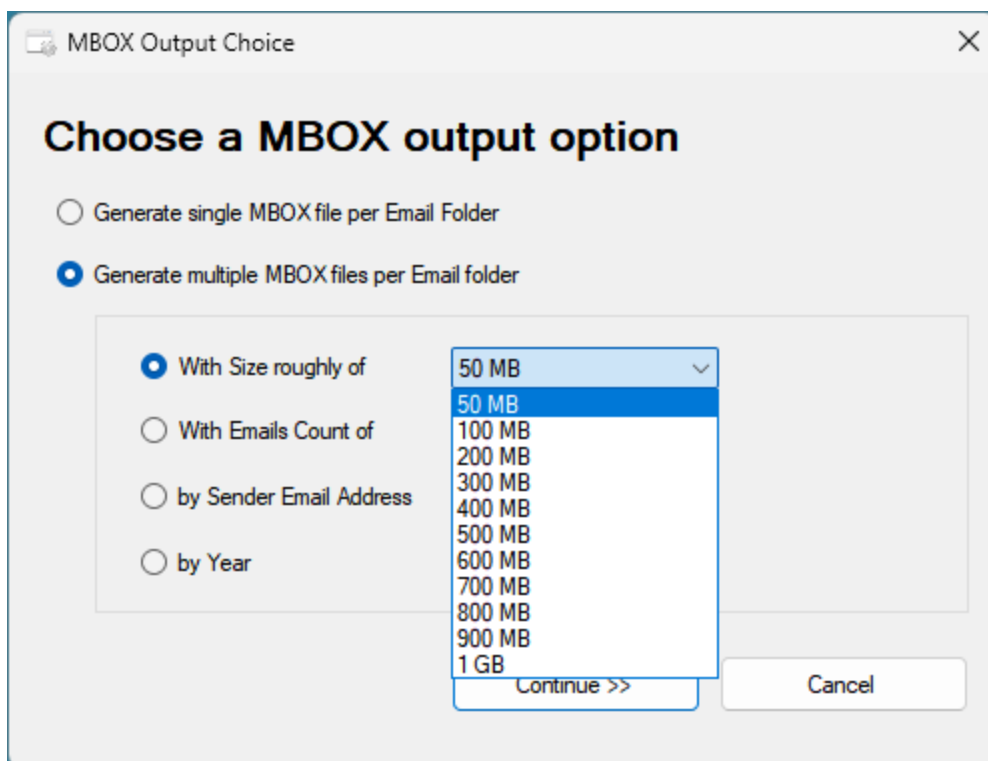
- A. Whole IMAP Account to new MBOX files
- B. Chosen IMAP Folder to existing or new MBOX file
- C. Chosen few emails to existing MBOX file

This will prompt you with MBOX output dialog box, where you will need to opt if to generate a single MBOX file per email folder, or multiple MBOX files per email folder.

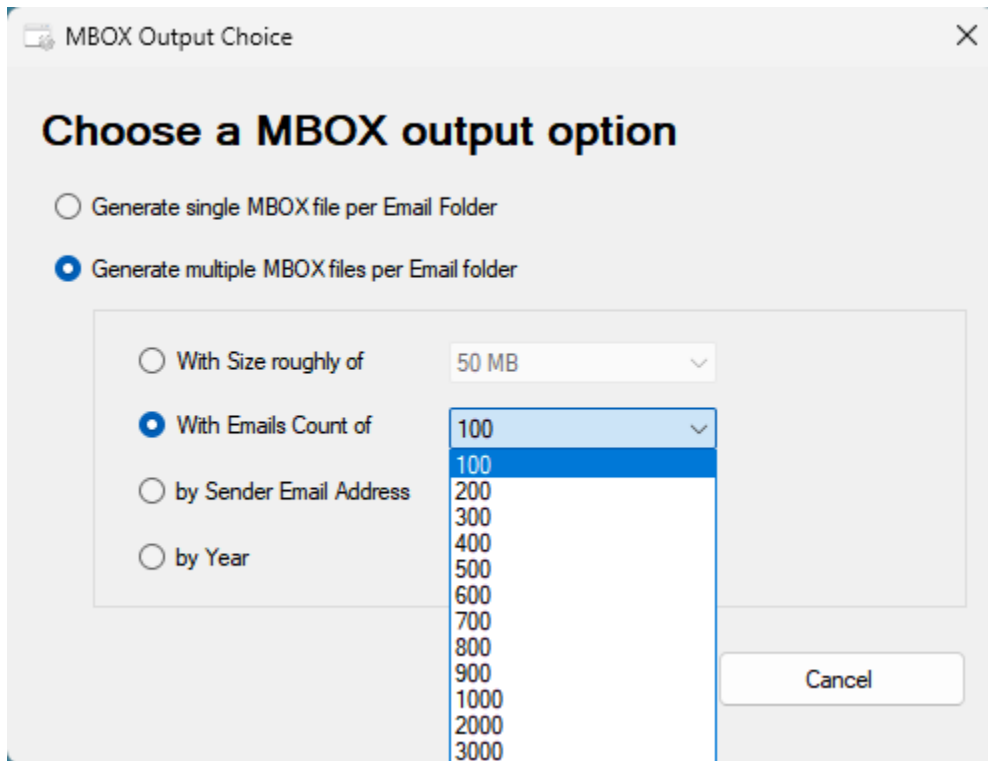


If you choose the latter option (i.e., **Generate multiple MBOX files per email folder**), you will need to specify on what parameter the number of MBOX files will be generated from your IMAP accounts.

Multiple MBOX files By Size - For instance, the app can generate multiple MBOX files from your Inbox or an email folder, based on your selection of the expected size of the MBOX file (from 50 MB to 1 GB).



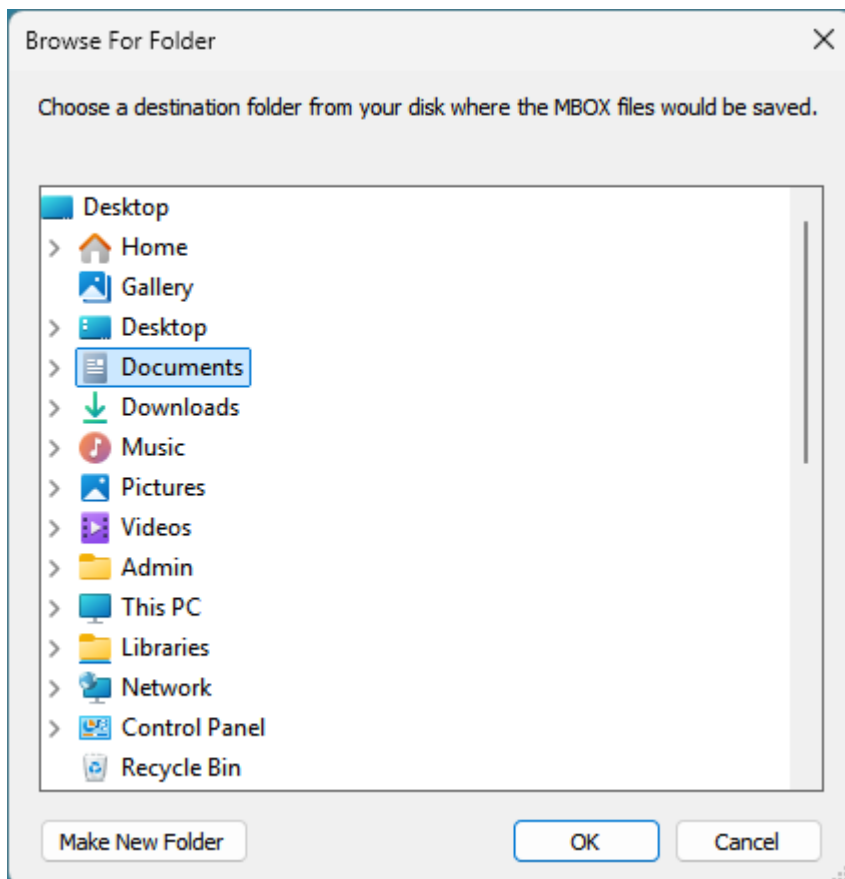
Multiple MBOX files by Emails Count - Another parameter is to generate multiple MBOX files of an email folder by specifying the number of emails you want in the MBOX file. For example, you can choose from 100 emails to 10,000 emails, so that emails of an email folder are equally distributed between multiple MBOX files.



Multiple MBOX files by Sender Email Address - With this option, the app will create multiple MBOX files from an email folder, where one MBOX file will be created for each sender, storing all the email messages from that sender.

Multiple MBOX files by Year - With this option, the app will create that number of MBOX files based on the time range in Year of all your emails of your email folder. For instance, if your Inbox has 5 years of emails, the app will create 5 MBOX files, where each MBOX file will have only those emails that were received on a particular year.

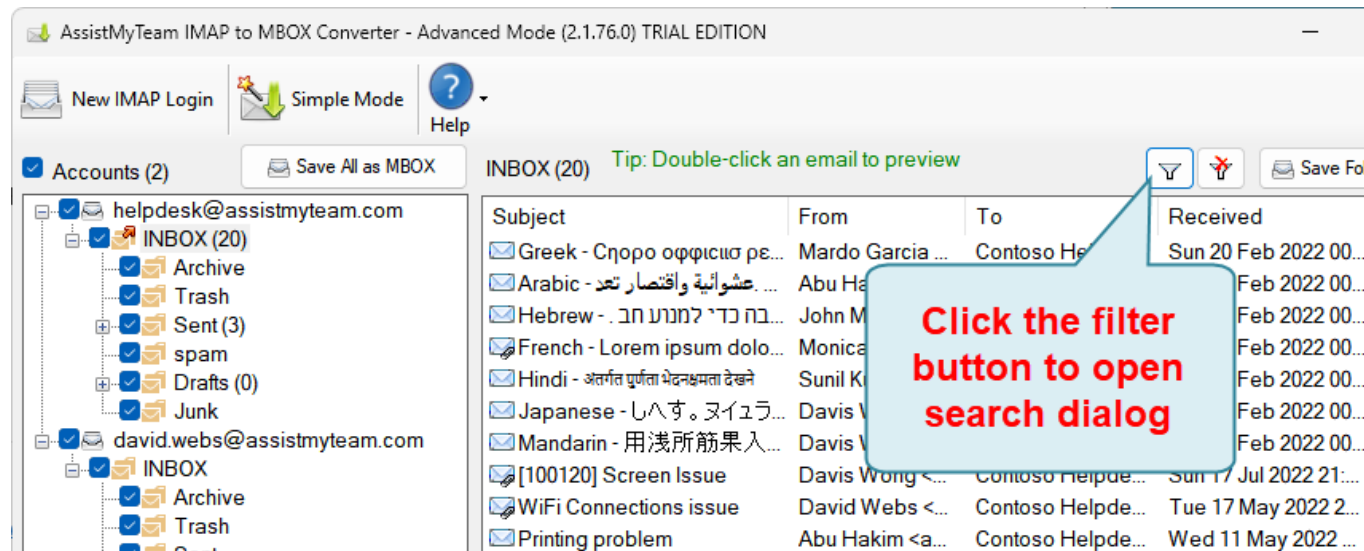
Once you have selected a MBOX output option, you will be prompted with the **'Browse for Folder'** dialog box. Choose a destination folder where the emails from your IMAP Inbox and other folders will be exported as MBOX files.



The app will recreate and retain the same original folders structure of your mailboxes in the selected destination folder of your computer to store the various exported MBOX email files for easy access, sharing and filing in your local computer.

Apply keywords search and filters

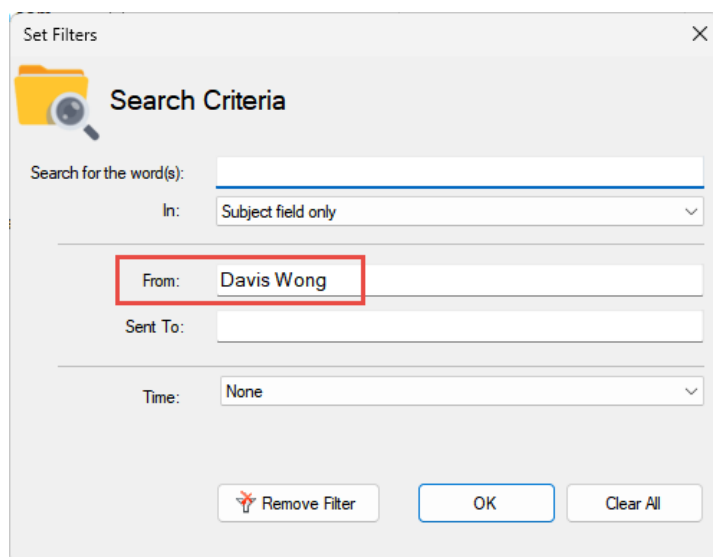
You can choose to perform a keyword search and apply filters and only perform the bulk conversions of those emails in the IMAP account that fulfil the search parameters to MBOX. To do that, click the ‘Filter’ button available on top of the tree-view control box.



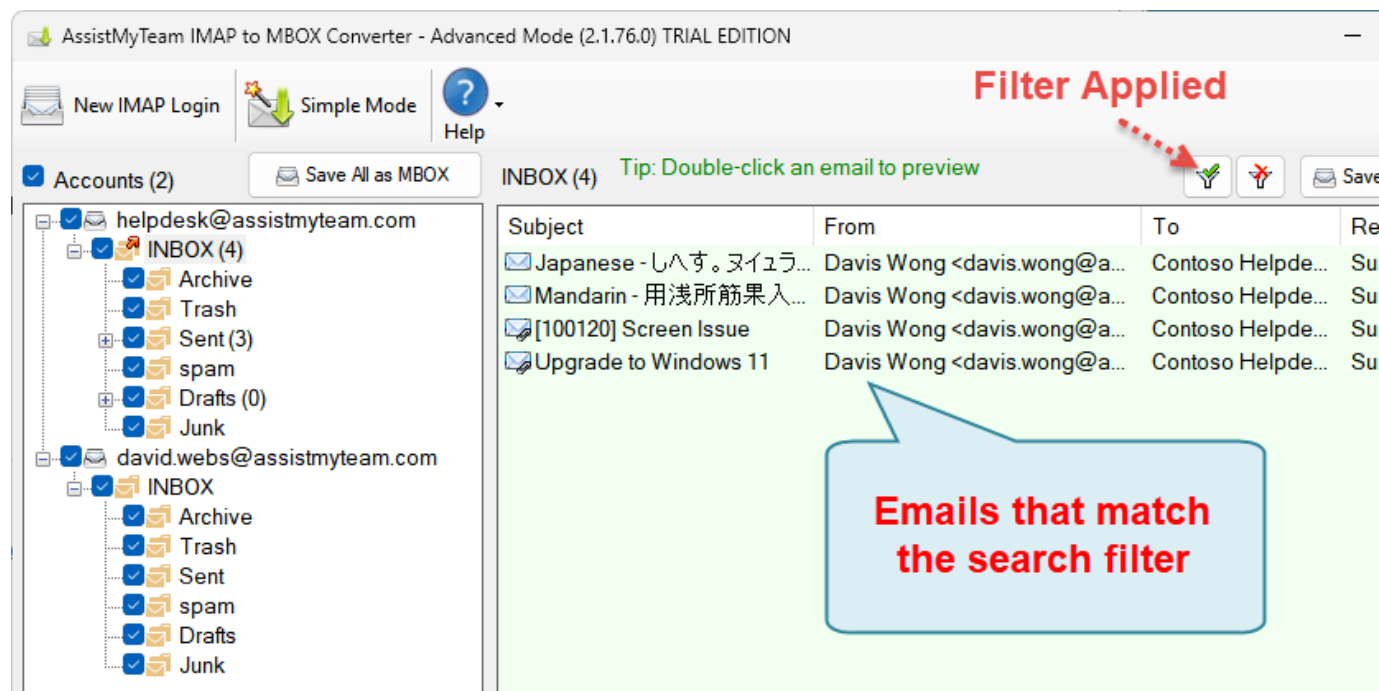
A dialog box for the search pop ups enabling you to input keywords search in the subject or body or both.

You can also filter the emails by matching the sender in the ‘From’ field and/or the recipient in the ‘To’ field.

Additionally, you can specify a time duration to restrict the emails that fall between the start and end date.

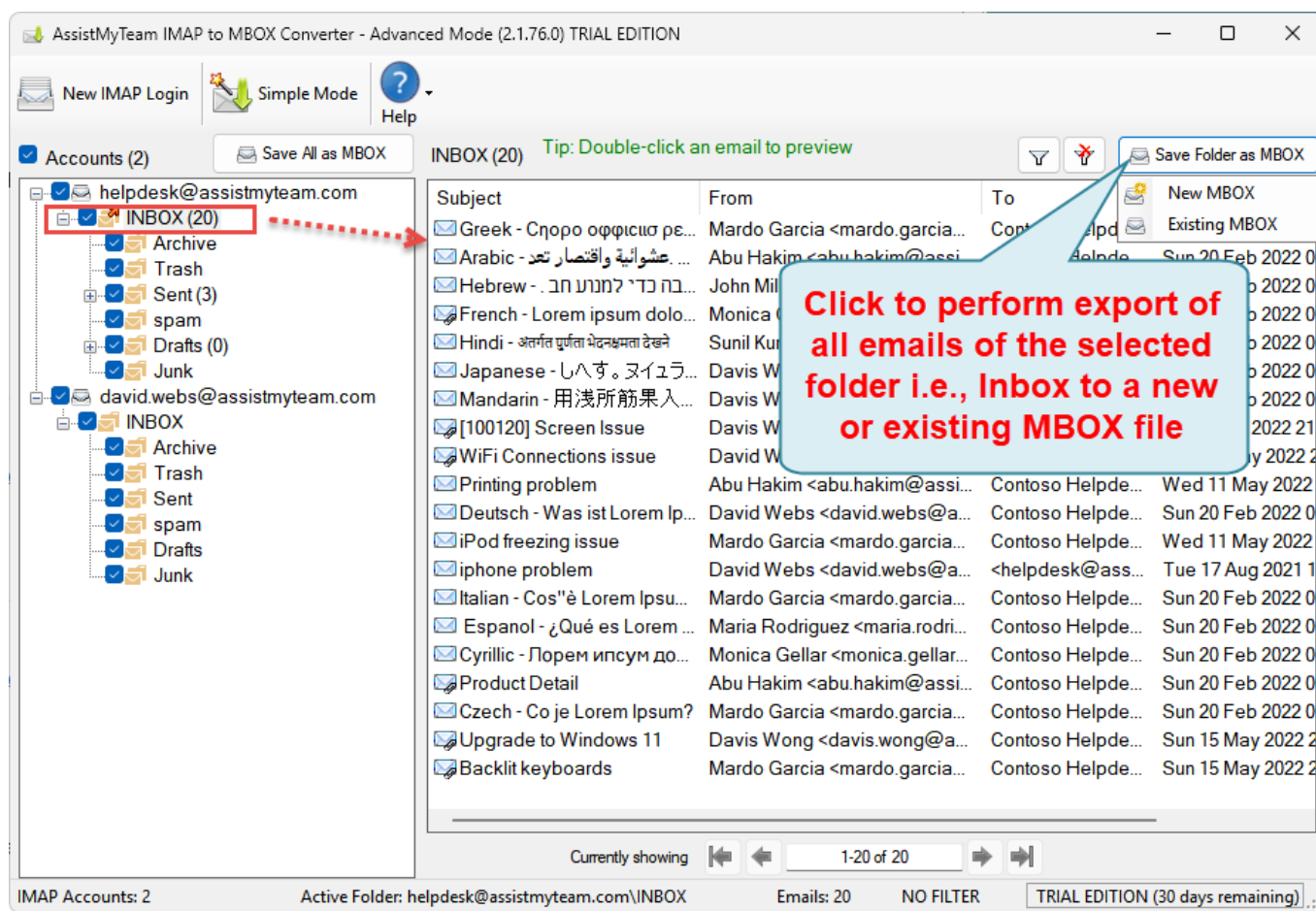


After applying the filters, the filter icon will change with a green tick mark, and the background colour of the email’s container box will also be in green.

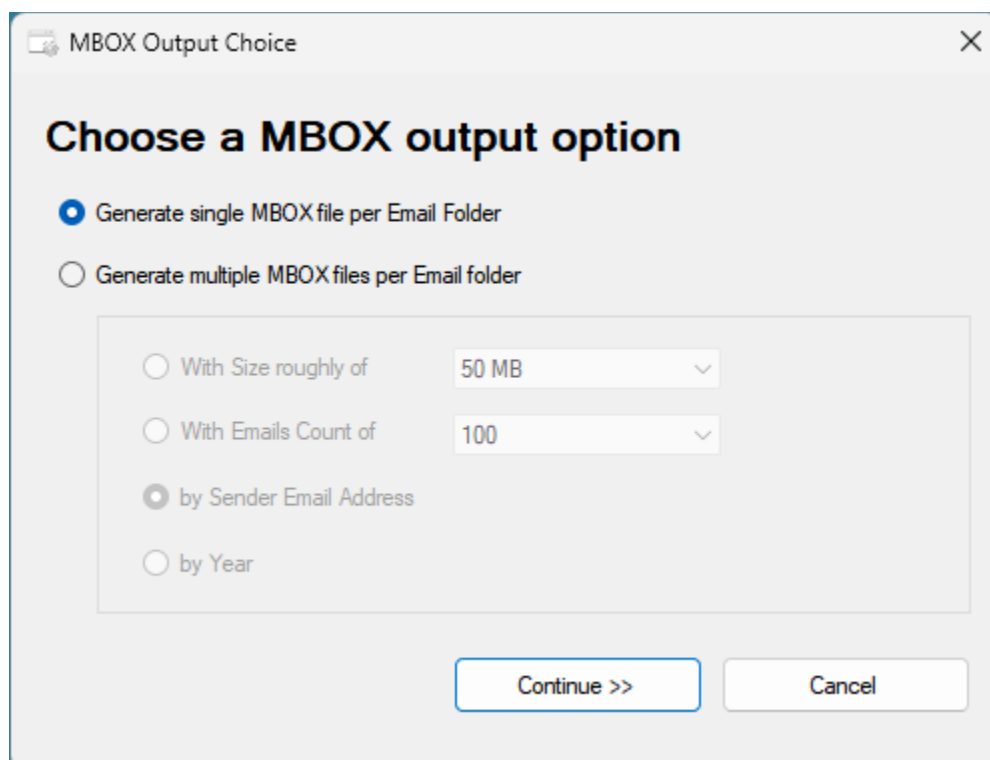


B. Convert Emails of IMAP folder to MBOX (multiple conversion)

At times, what you may need is only to export emails of a particular IMAP folder. In such needs, you can perform the MBOX conversion by clicking the particular folder from the folders tree-view, on the left side. This will show you all the emails in the folder view on the right side. You can then proceed to click 'Save Folder as MBOX' button located on the extreme right corner of the folder view.

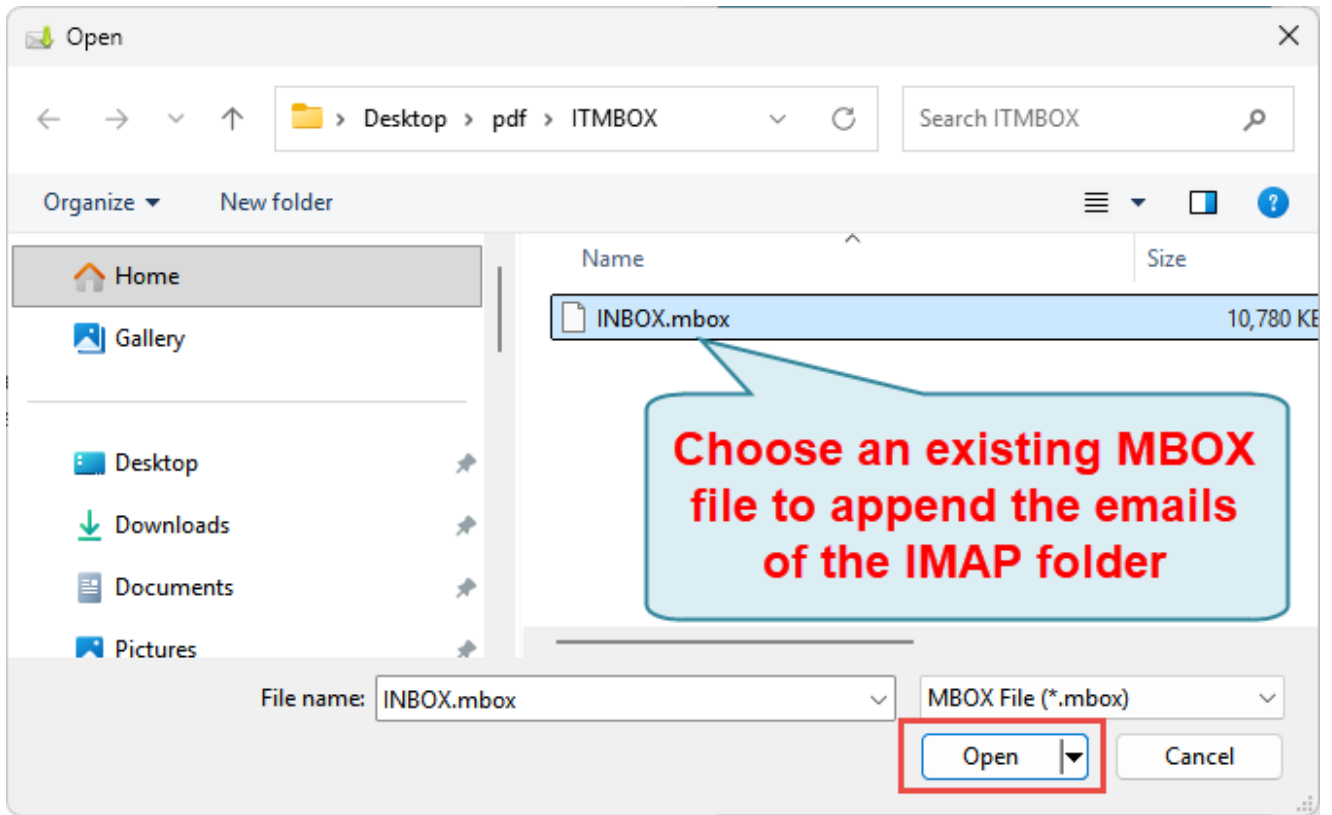


If you choose to export all the emails of this particular folder to a new MBOX file, the App will prompt you with MBOX output dialog box where you will need to opt if to generate a single MBOX file per email folder, or multiple MBOX files per email folder.



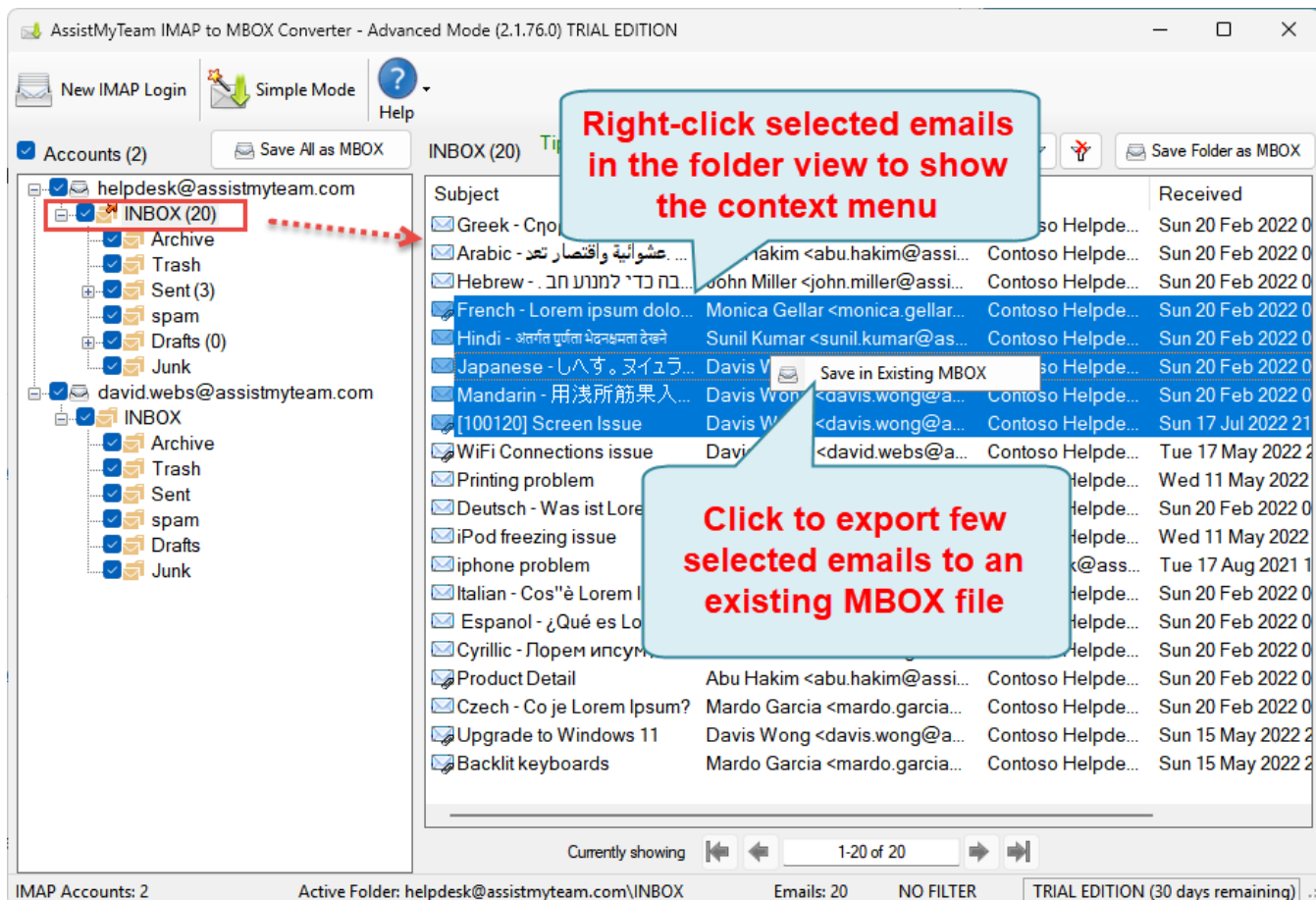
And then, you will need to specify a destination folder where a new MBOX file will be created.

If you choose to export the emails of this particular mailbox folder to an existing MBOX file, you will be prompted to choose it from your computer.

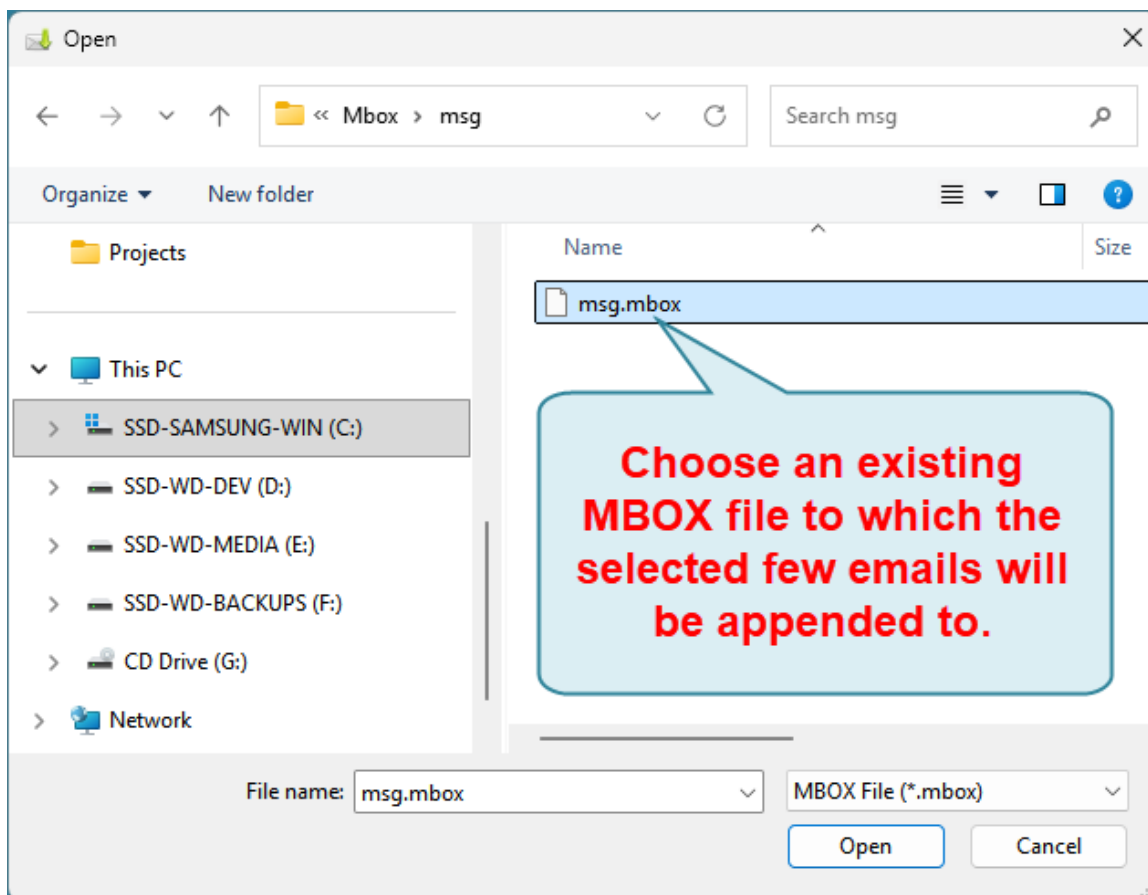


C. Convert few selected emails to MBOX

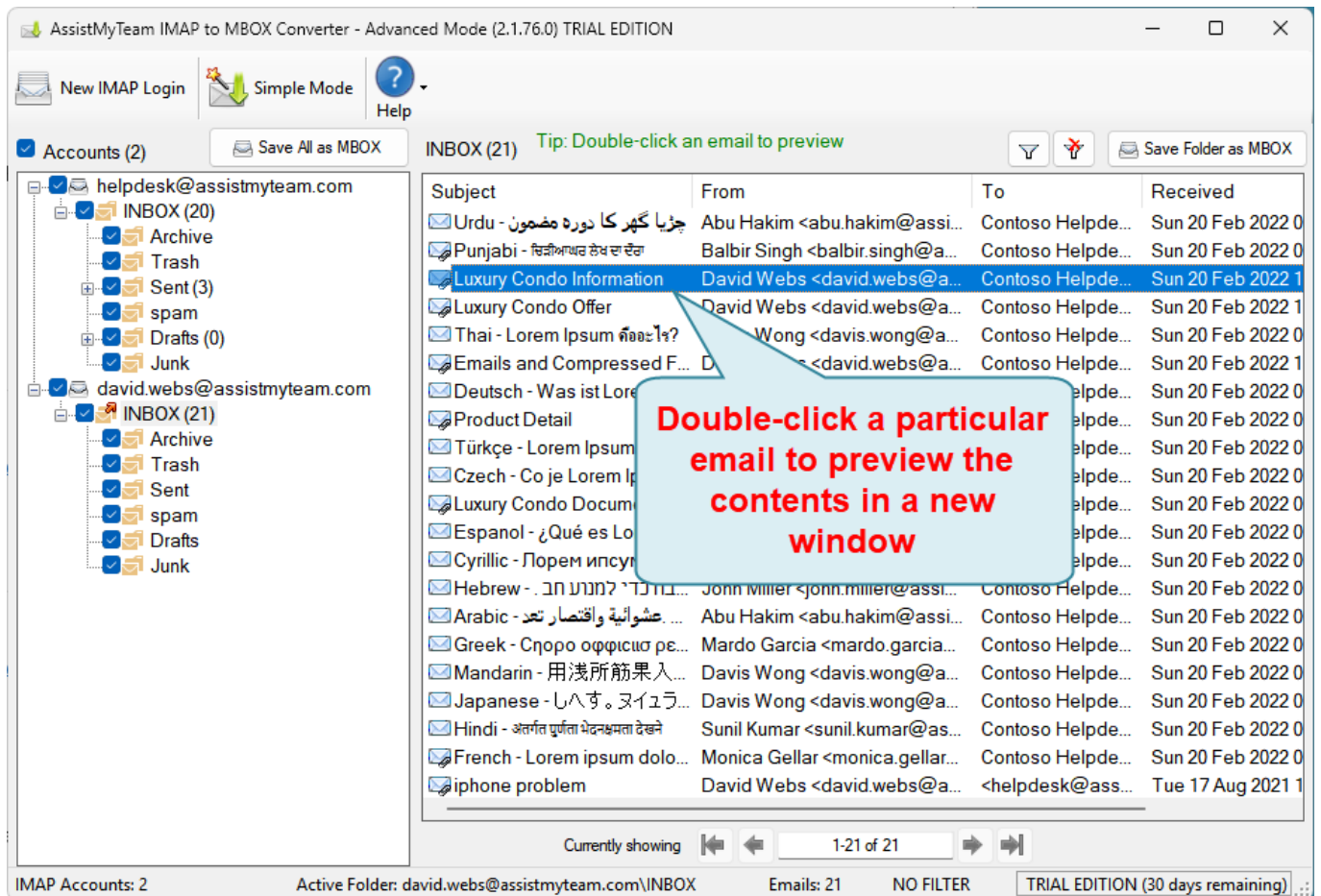
In this mode, you can export only those few emails of interest to MBOX files. To do this, select multiple emails of your interest from your Inbox and right-click to show the context menu 'Save in Existing MBOX'.



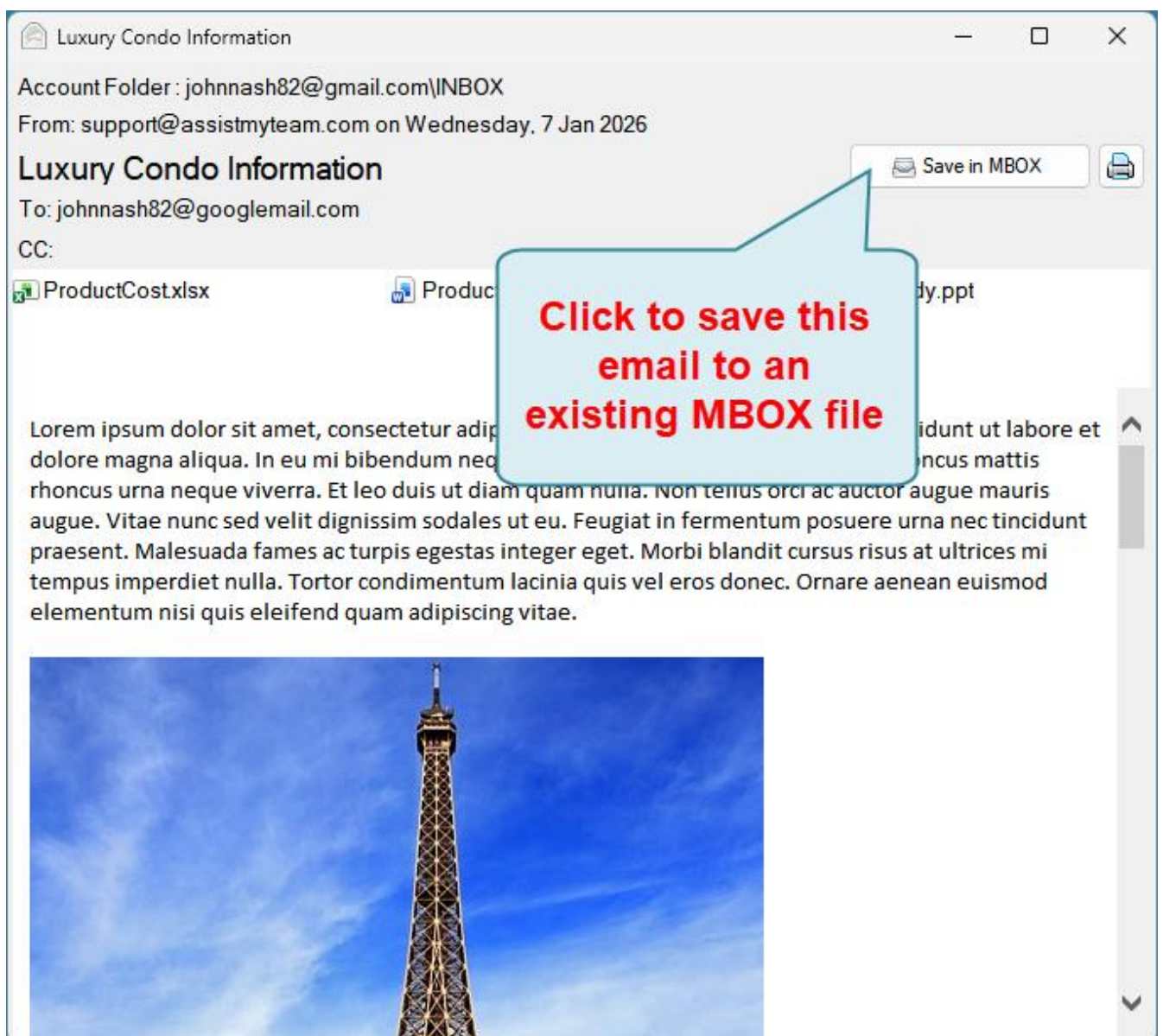
When you click it, you will be prompted to choose a destination folder where the selected emails from your IMAP Inbox folder will be exported as MBOX files.



Alternatively, you can preview the full content of a particular email, by double-clicking it from your Inbox folder.



This will show you the contents of the particular email in a new window.



And then choose to save the previewed email to MBOX by clicking the 'Save in MBOX' button located on the upper right side. This will prompt you to choose an existing MBO file from your computer to which the email will be added in the collection.

