

V2

AssistMyTeam

IMAP to EML Converter

Export emails from IMAP to EML files



Welcome to IMAP to EML Converter

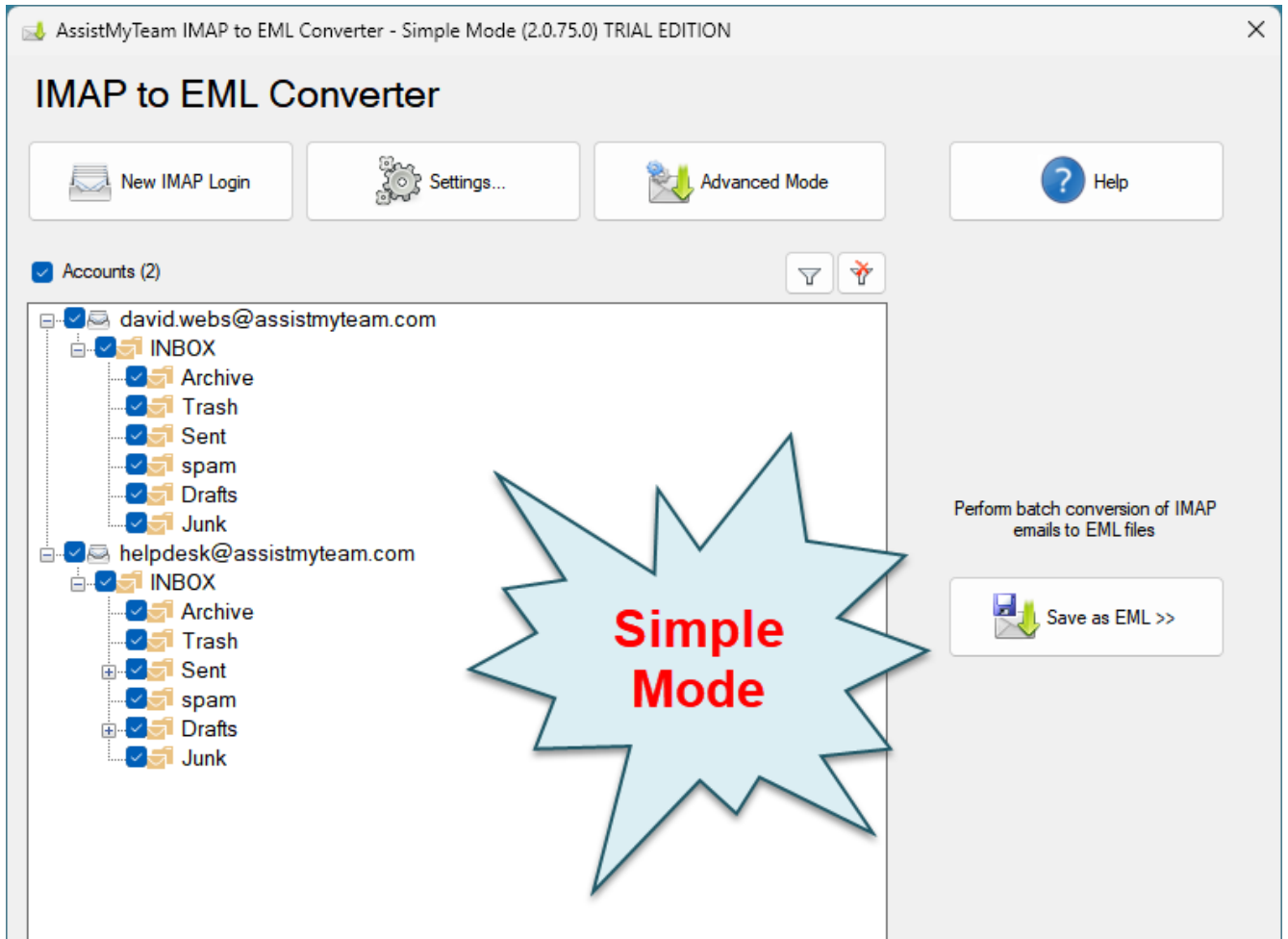
Convert emails and folders from IMAP Accounts to EML files, while preserving the folder structure and hierarchy – all in a click.

- Convert email to EML with attachments embedded within the EML file.
- Bulk extract email file attachments to a location on your hard drive.
- Use keywords and filters to search and find specific emails of importance before converting to EML files.
- Different mode of conversion – single email to EML, multiple emails to EMLs, IMAP folder or whole IMAP Account into EMLs.
- Maintains original folder structure to keep EML version of emails in same folders.
- Retains embedded images, attachments, metadata, and email attributes while exporting IMAP to EML.
- Special MSI installer available for enterprise-wide deployment*
- Support Windows 11, 10, 8, 7 and Windows Servers

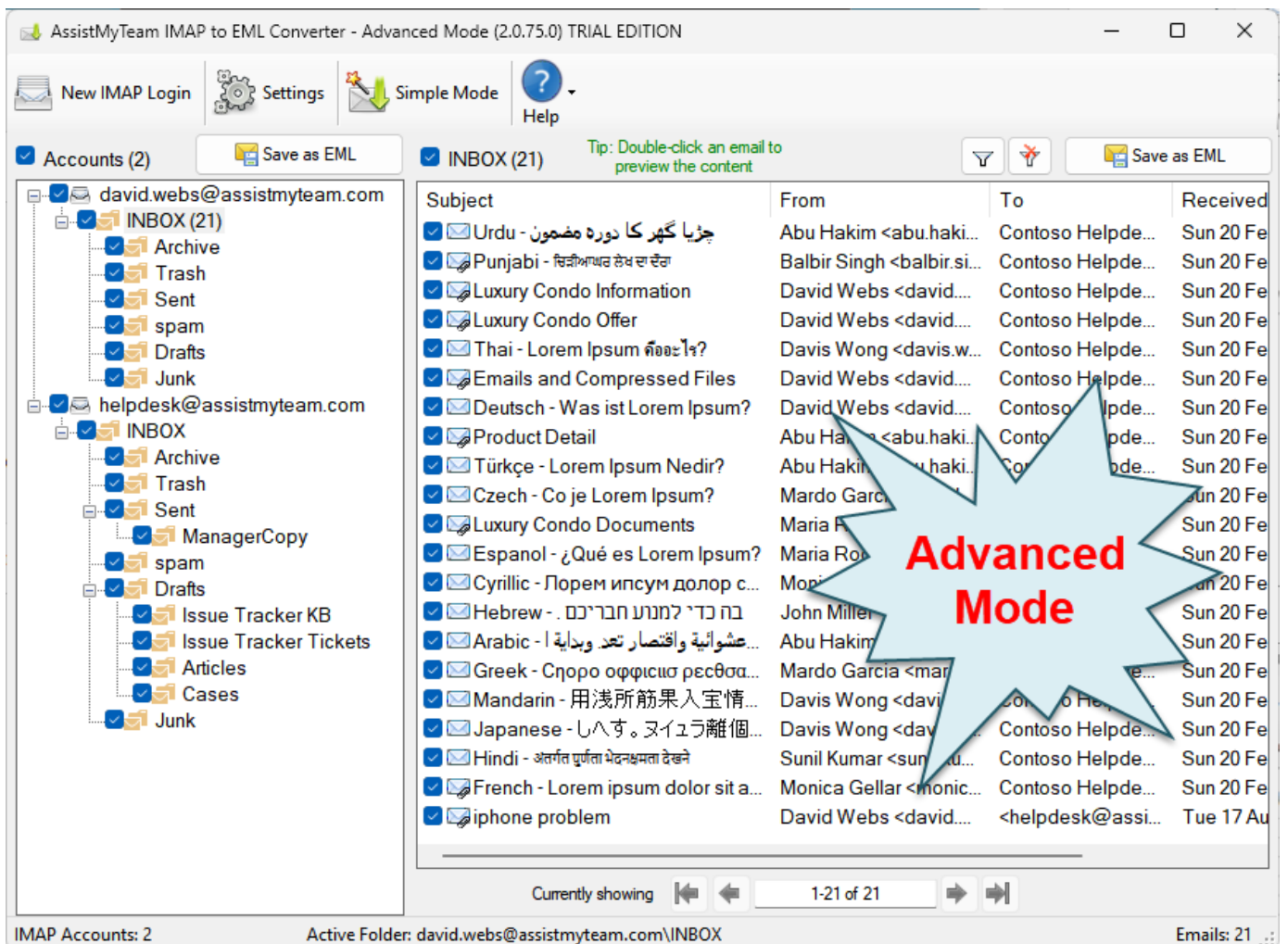
For a quick overview, refer to the [product website](#).

How It Works?

AssistMyTeam IMAP to EML Converter can operate in two modes – **Simple** (default) and **Advanced**, which has an interactive user interface with many options to export emails to EML documents.



IMAP to EML Converter – Simple Mode



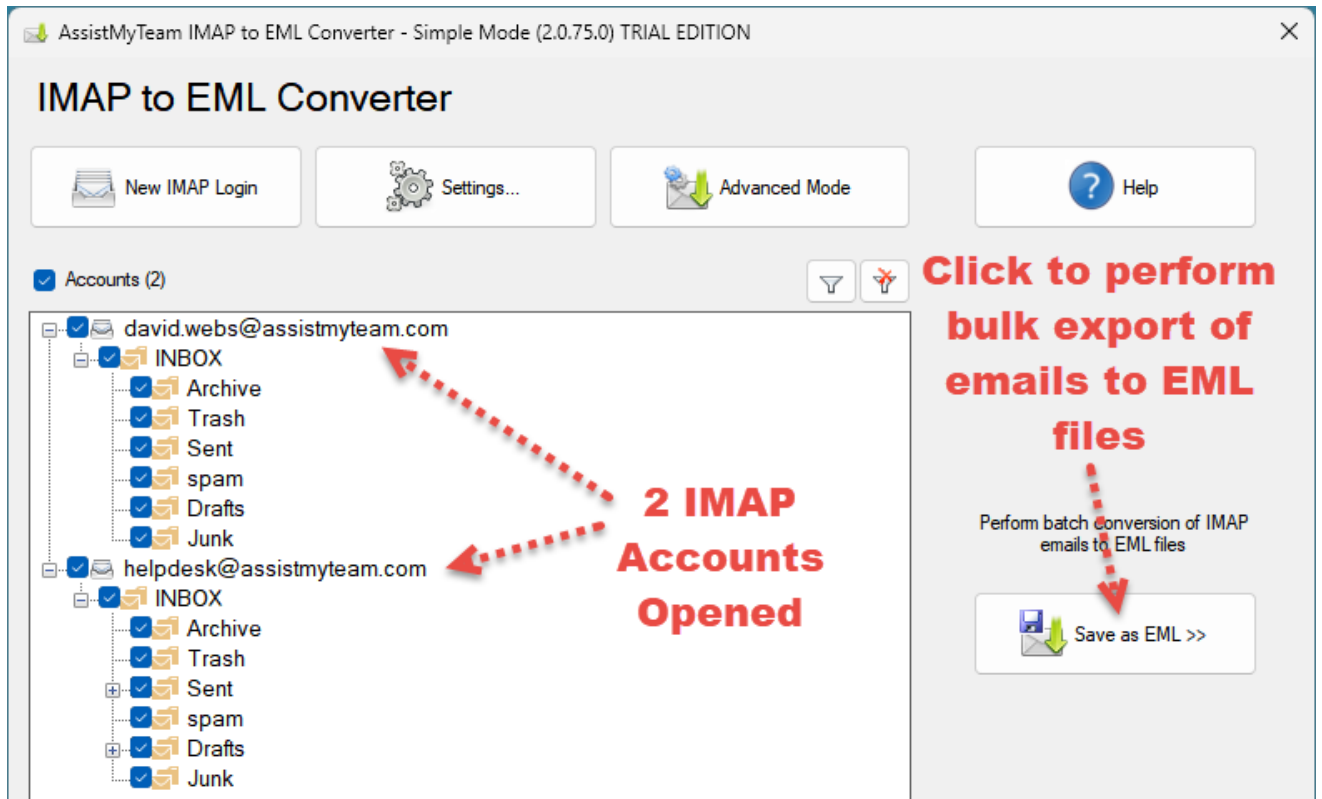
IMAP to EML Converter – Advanced Mode

There are four ways to perform EML conversion with AssistMyTeam IMAP to EML Converter:

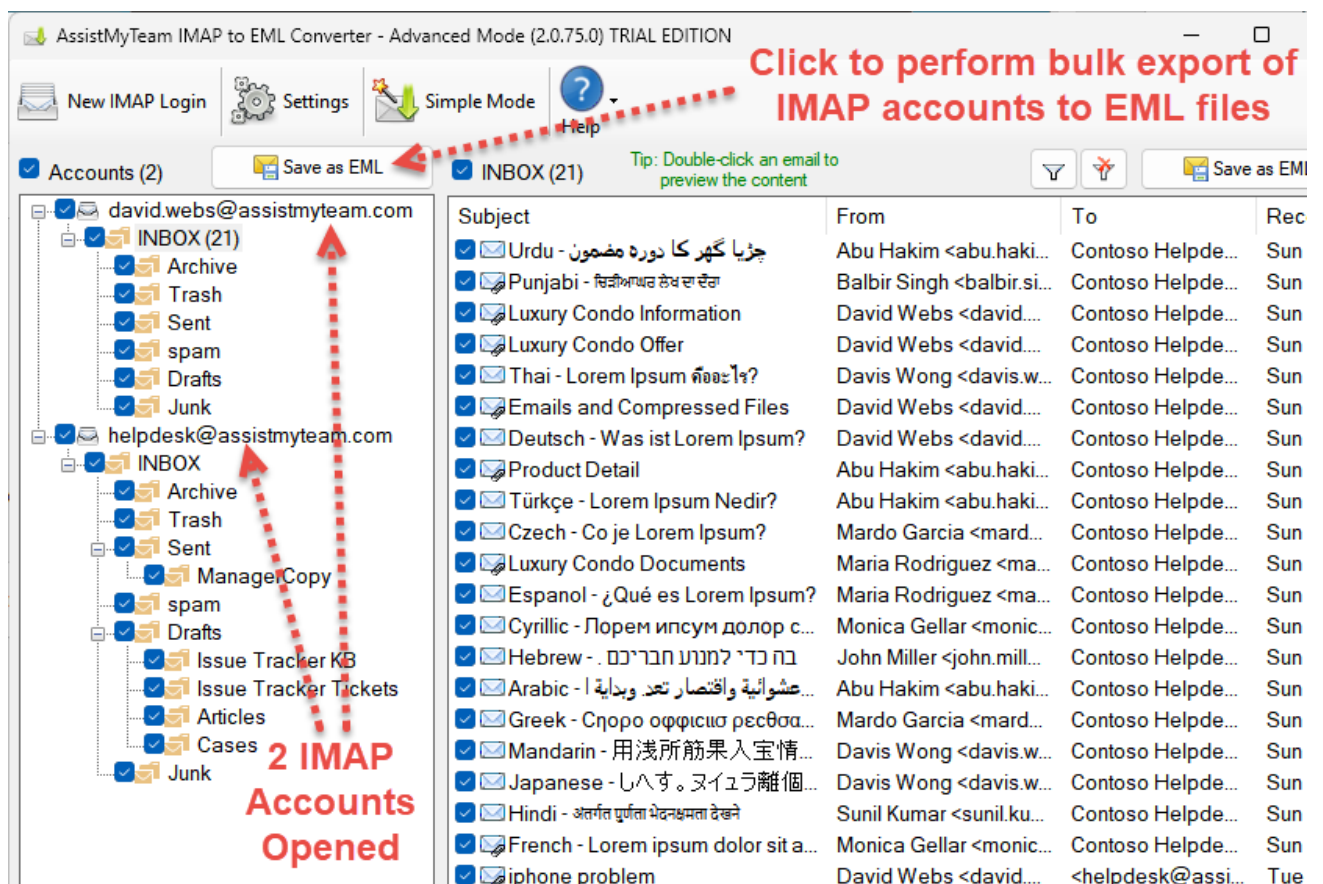
- A. Whole IMAP to EML
- B. Chosen IMAP Folder to EML
- C. Chosen Email to EML

A. Convert whole IMAP Accounts to EML (bulk conversion)

In this mode, you can perform bulk conversion of the whole contents of each IMAP account to EML format. Simply, click the 'Save as EML' button option just above the IMAP tree-view control.

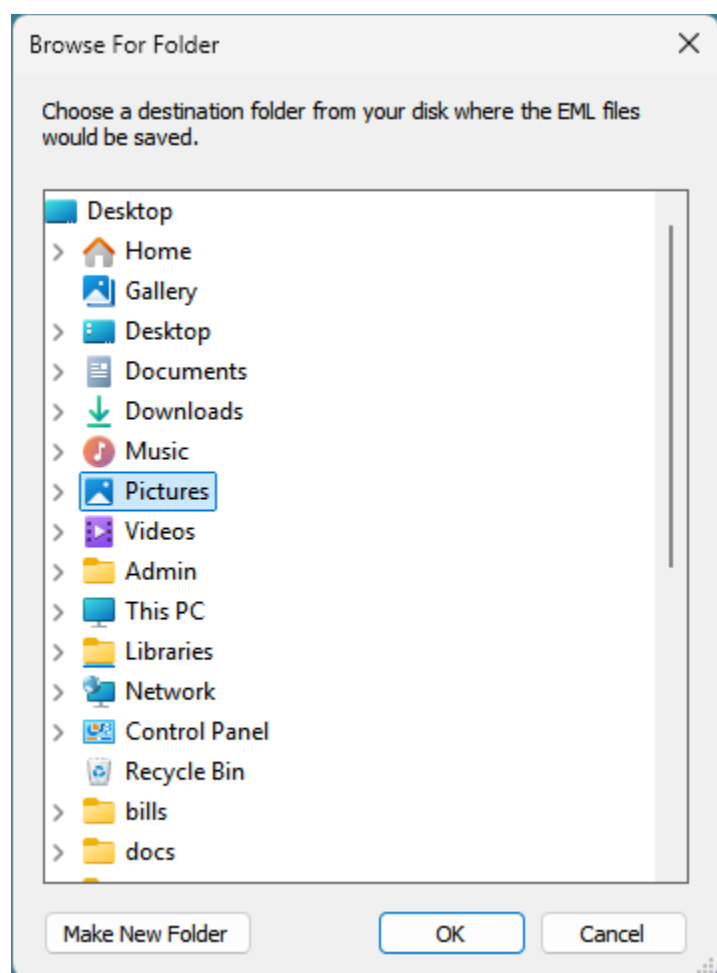


Bulk EML Conversion in Simple Mode



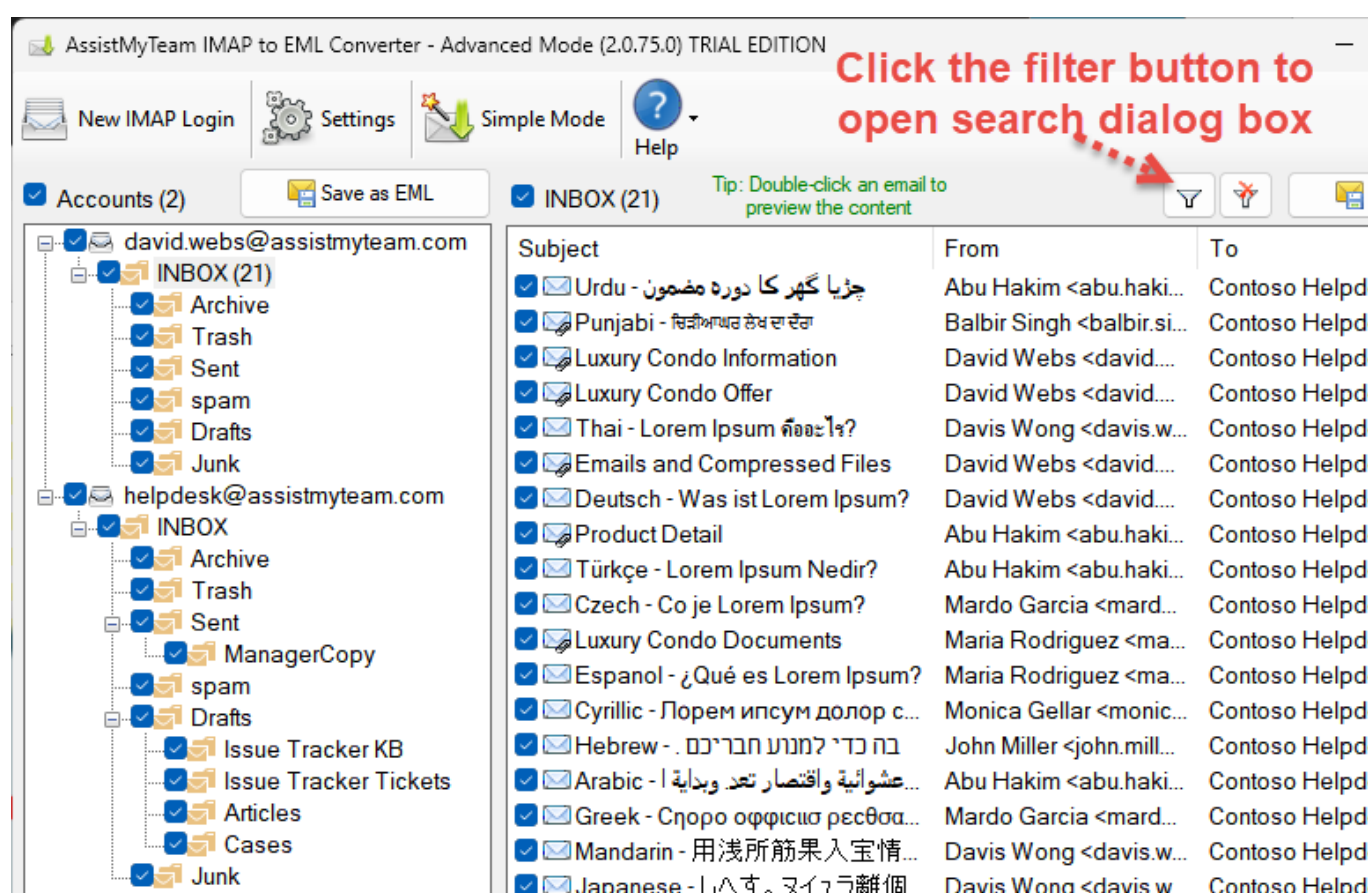
Bulk EML Conversion in Advanced Mode

From the 'Browse for Folder' dialog box, choose a destination folder where the emails from each IMAP account will be exported as EML files. The folders hierarchy of the IMAP account will be replicated in the destination folder, for easy access and use.

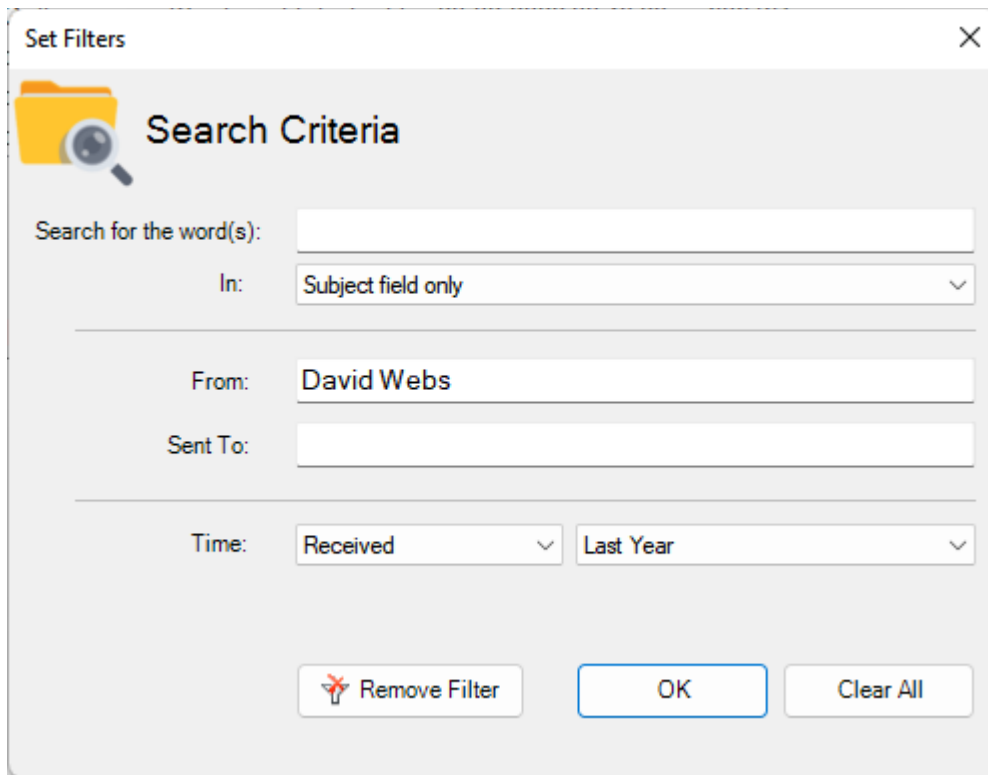


Apply keywords search and filters

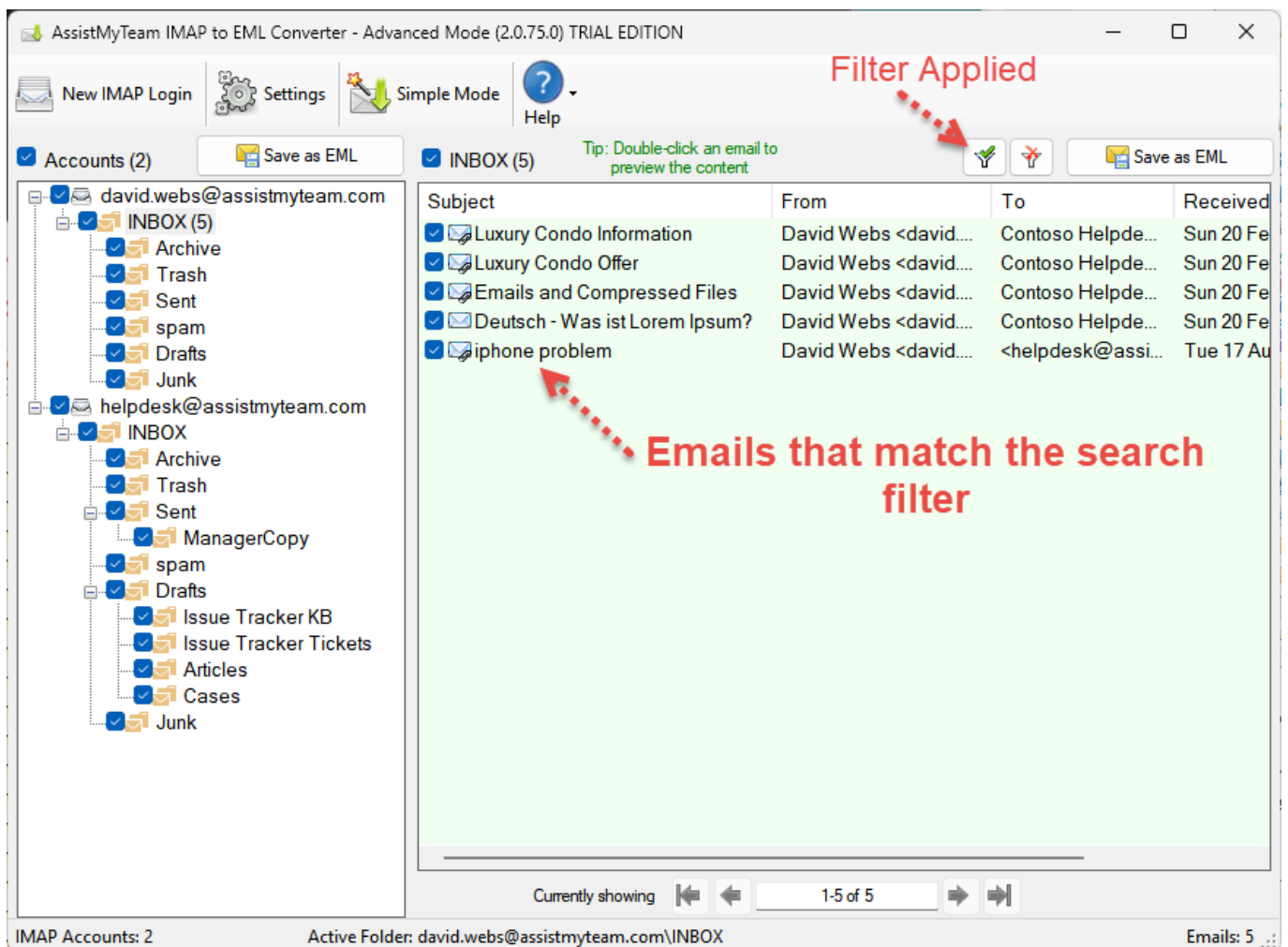
You can choose to perform a keyword search and apply filters and only perform the bulk conversions of those emails in the IMAP account that fulfil the search parameters to EML. To do that, click the 'Filter' button available on top of the IMAP tree-view control box.



A dialog box for the search pop ups enabling you to input keywords search in the subject or body or both. You can also filter the emails by matching the sender in the 'From' field and/or the recipient in the 'To' field. Additionally, you can specify a time duration to restrict the emails that fall between the start and end date.

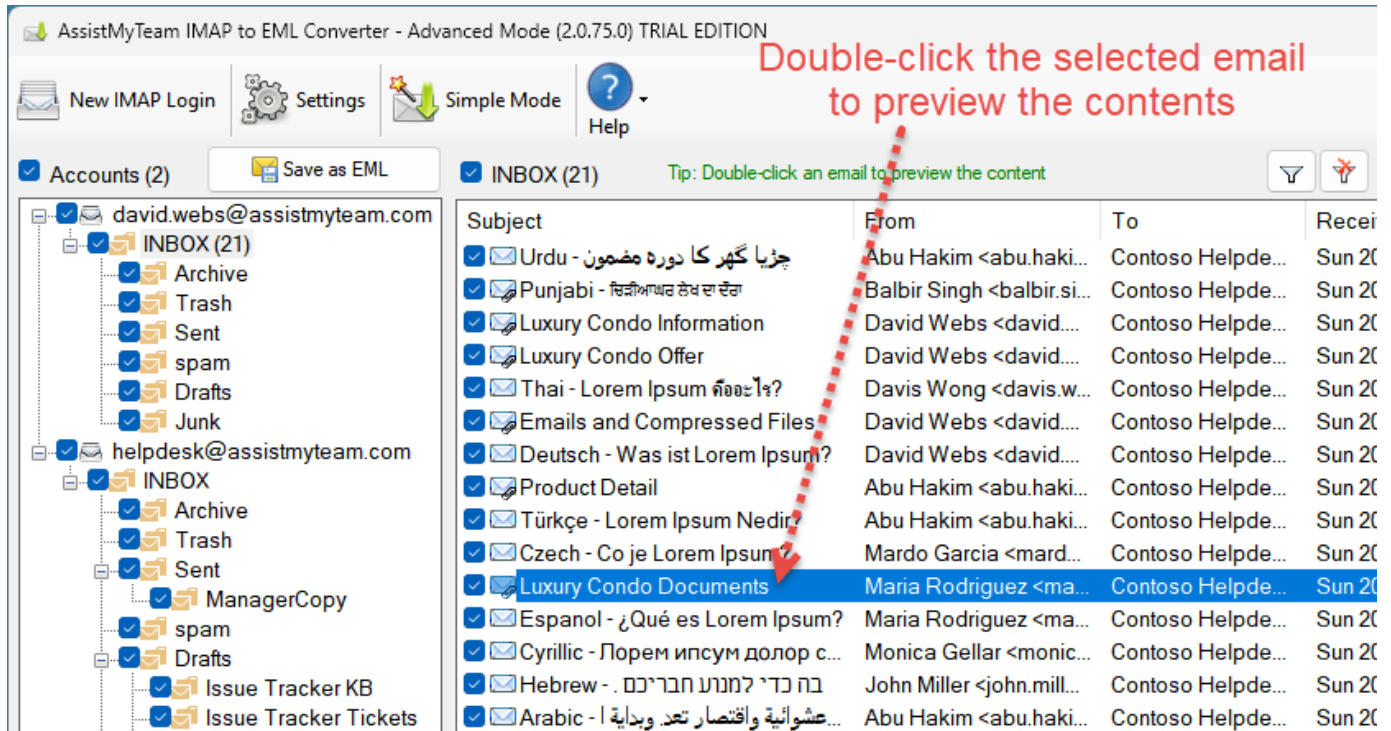


After applying the filters, the filter icon will change with a green tick mark, and the background colour of the emails container box will also be in green.



C. Convert a particular email of an IMAP Account to EML

In this mode, you can selectively choose an email in the IMAP account and save it to EML.



To achieve this, preview an email of interest by double-clicking it from the list of all emails shown in the folder view. And then choose to save the previewed email to EML by clicking the 'Save as EML' button located on the upper right side.

