

V2

AssistMyTeam

Gmail to EML Converter

Export emails from Gmail to EML files



Welcome to Gmail to EML Converter

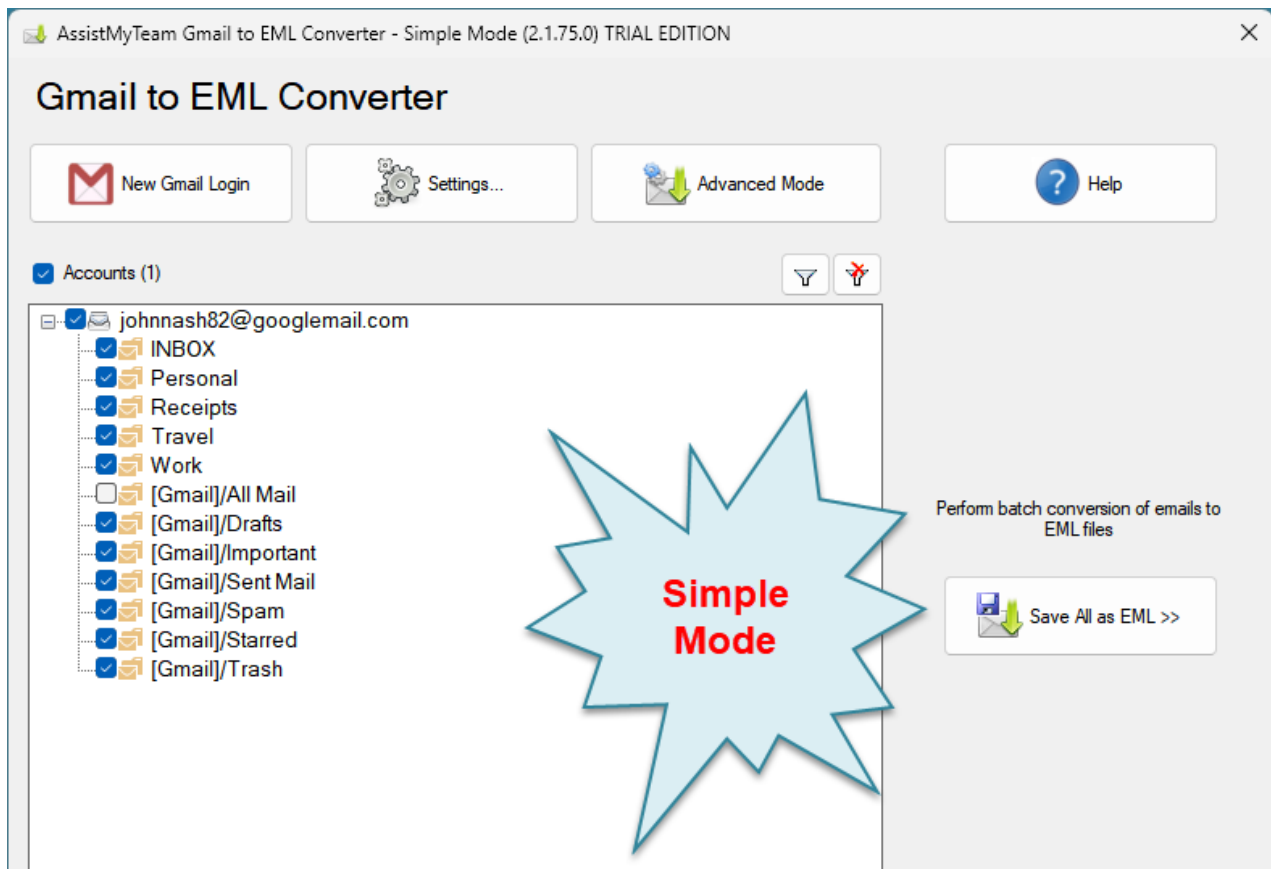
Convert and save emails, attachments, folders from Gmail accounts to EML or EML/A files, while preserving the folder structure and hierarchy – all in a click.

- Convert email to EML with attachments embedded within the EML file.
- Bulk extract email file attachments to a location on your hard drive.
- Use keywords and filters to search and find specific emails of importance before converting to EML files.
- Different mode of conversion – single email to EML, multiple emails to EMLs, whole folder or Gmail Account into EMLs.
- Retains embedded images, attachments, metadata, and mail attributes while exporting emails from Gmail accounts to EML.
- Backup email messages for regulatory or legal compliance.
- Automatically enforce consistent naming convention to replicated EML files.
- Retain the same original folders structure of your Gmail account in the disk for easy access, sharing and filing.
- All conversions and processing performed locally. Ideal for closed systems.
- Special MSI installer available for enterprise-wide deployment*.
- Support Windows 11, 10, 8, 7 and Windows Servers.

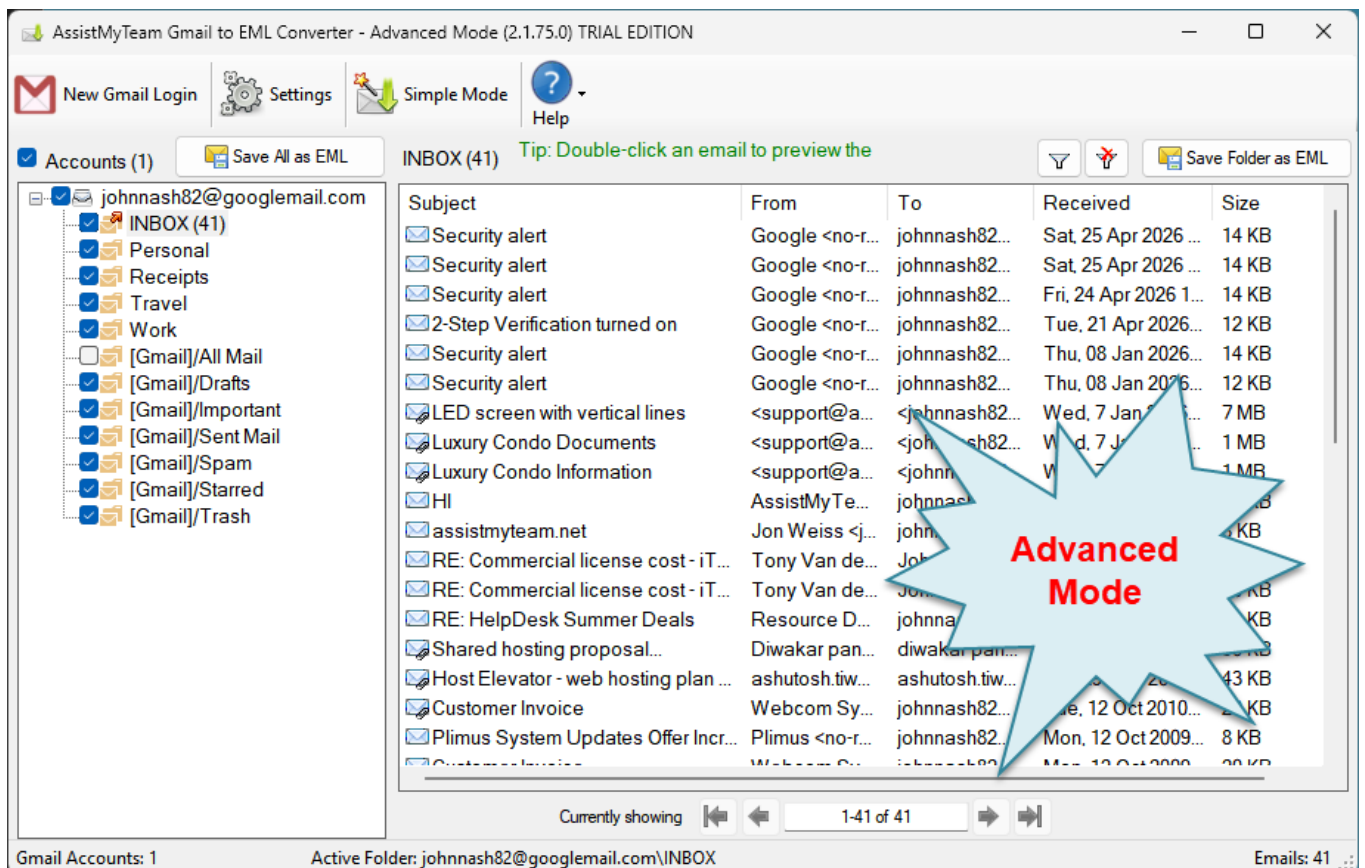
For a quick overview, refer to the [product website](#).

How It Works?

AssistMyTeam Gmail to EML Converter can operate in two modes – **Simple** (default) and **Advanced**, which has an interactive user interface with many options to export emails to EML.



Gmail to EML Converter – Simple Mode



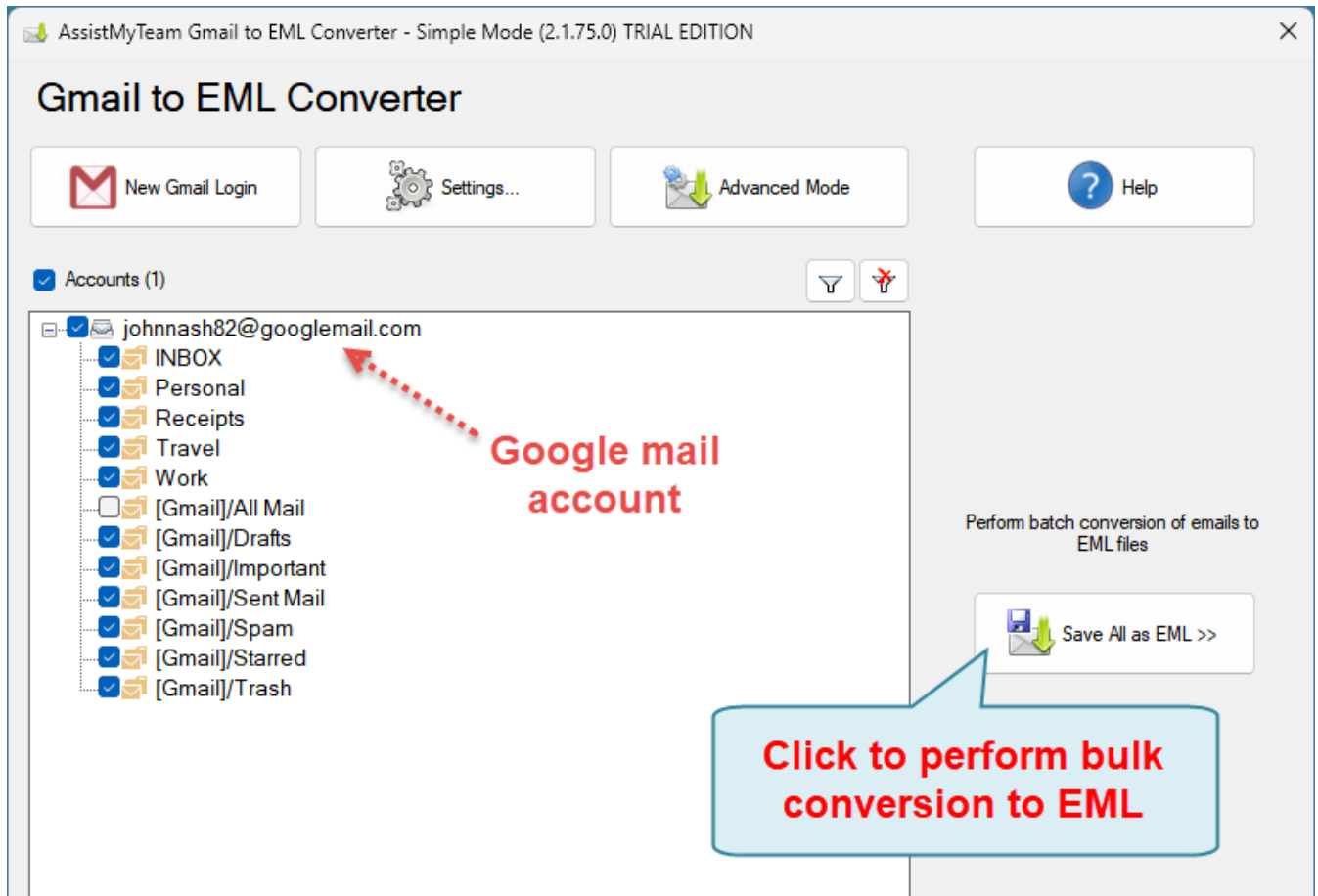
Gmail to EML Converter – Advanced Mode

There are three ways to perform EML conversion with Gmail to EML Converter:

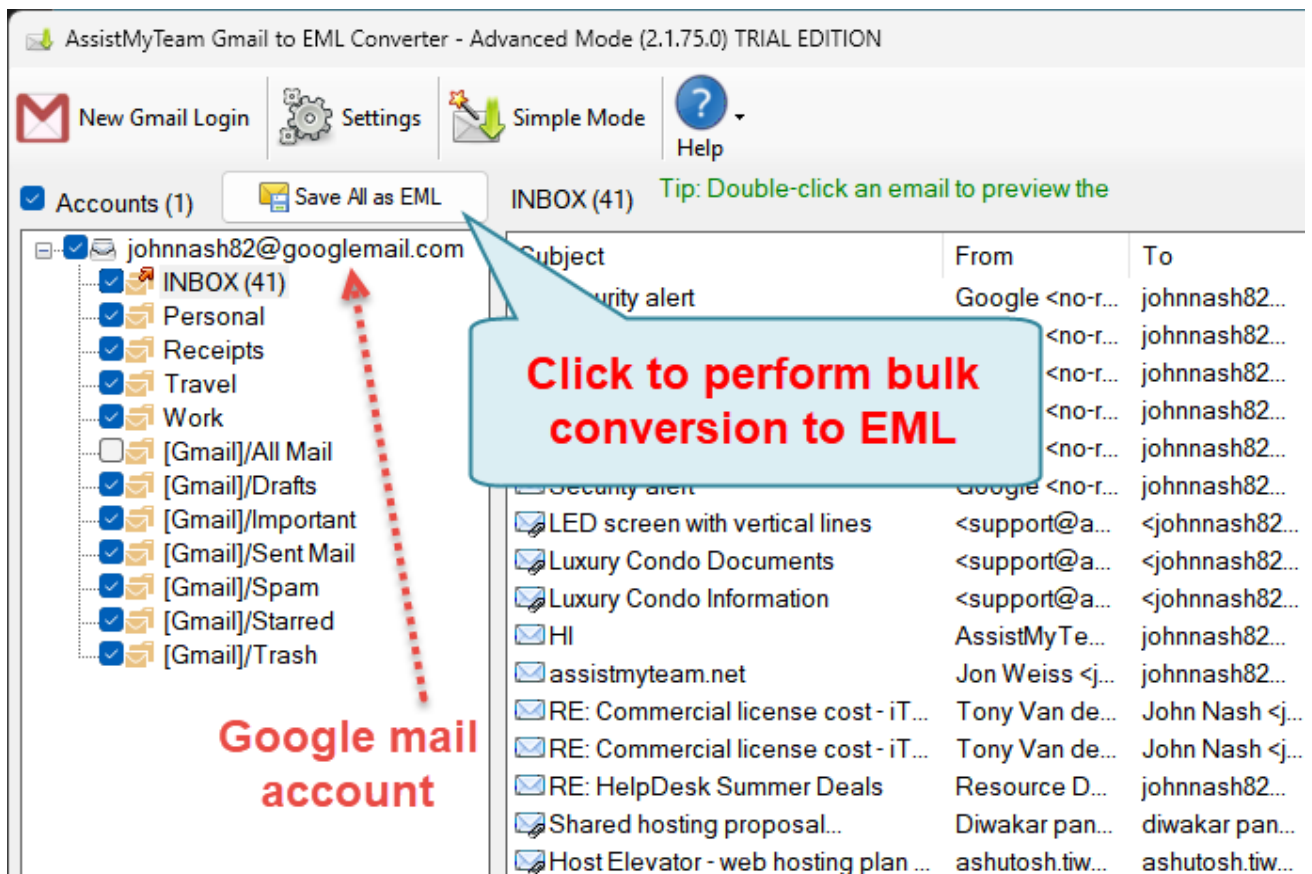
- A. Whole Gmail Account to EML
- B. Chosen Gmail Folder to EML
- C. Chosen Email to EML

A. Convert whole Gmail accounts to EML (bulk conversion)

In this mode, you can perform bulk conversion of the whole contents of each Gmail to EML format. Simply, click the 'Save All as EML' button option just above the tree-view control.

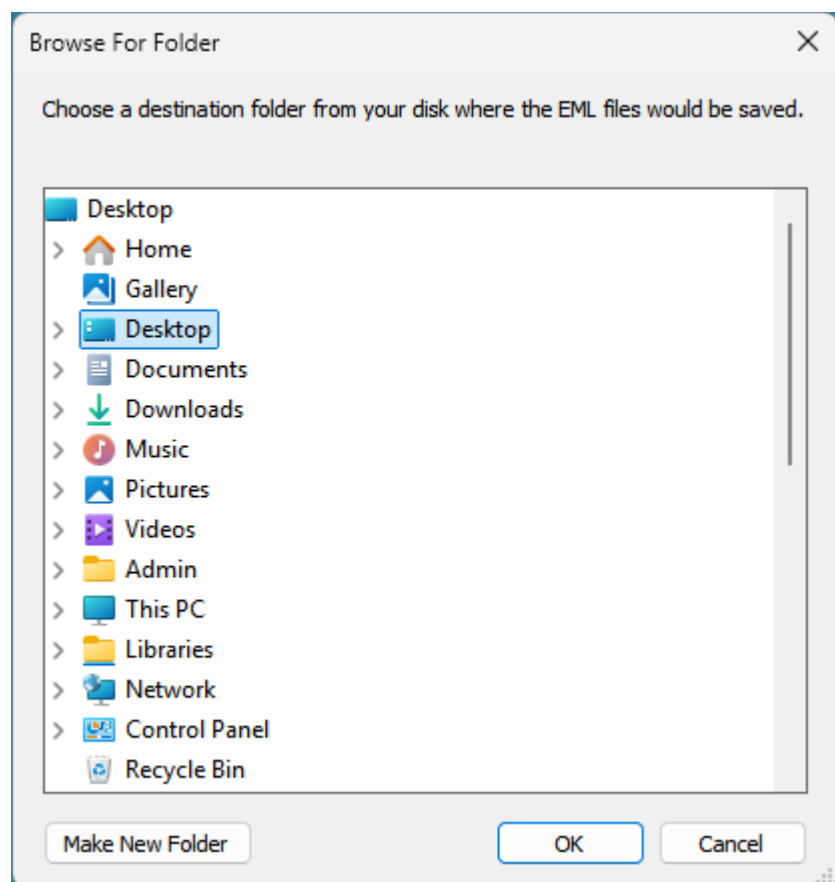


Bulk EML Conversion in Simple Mode



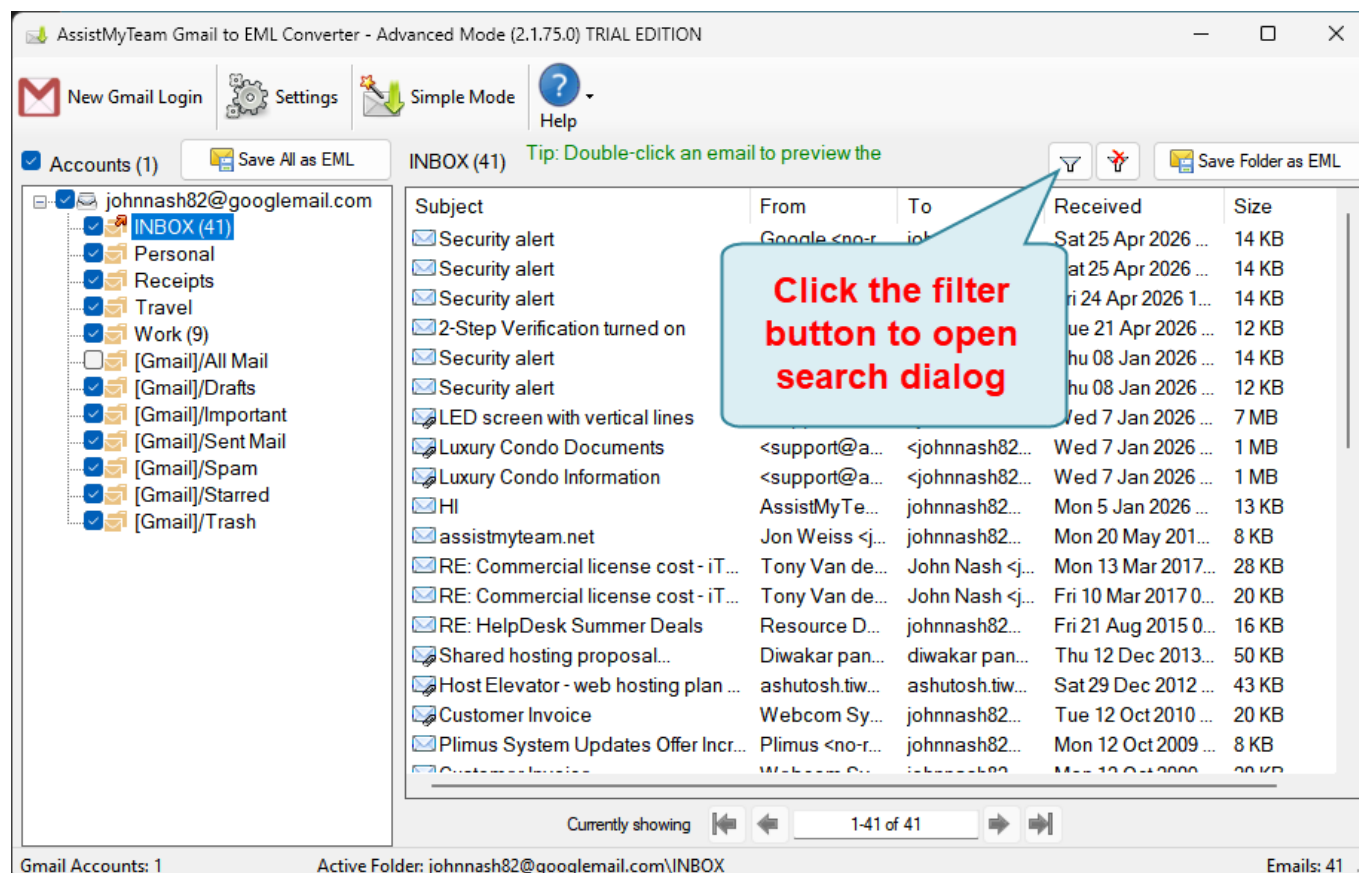
Bulk EML Conversion in Advanced Mode

From the **'Browse for Folder'** dialog box, choose a destination folder where the emails from each Gmail account will be exported as EML files. The folders hierarchy of the Gmail account will be replicated in the destination folder, for easy access and use.

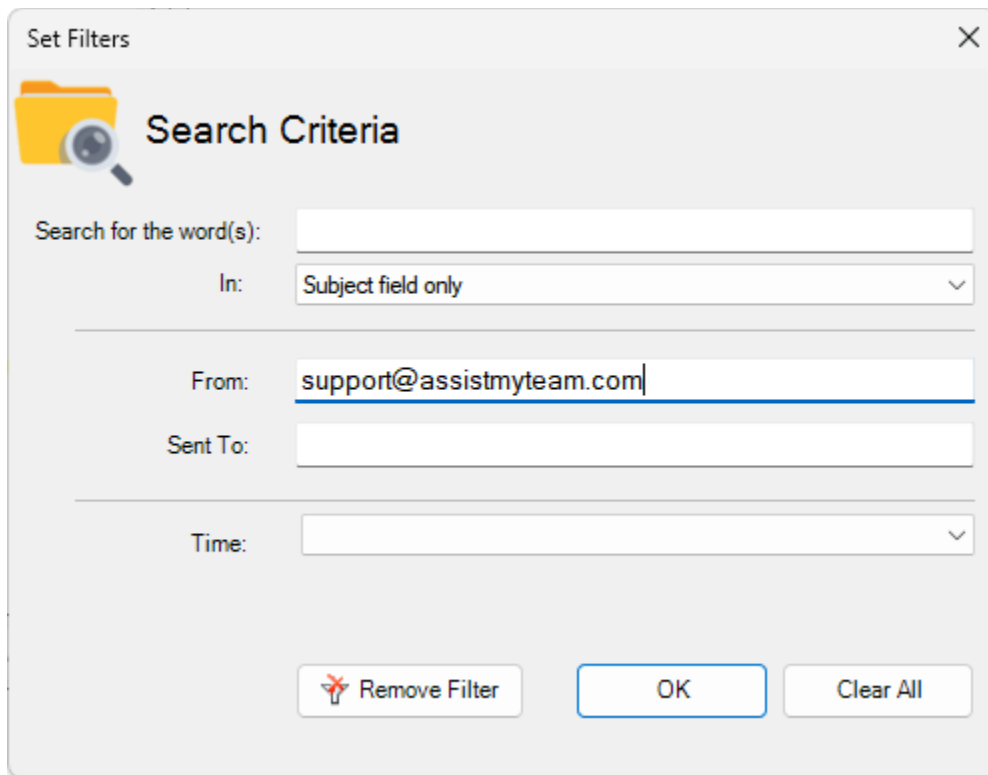


Apply keywords search and filters

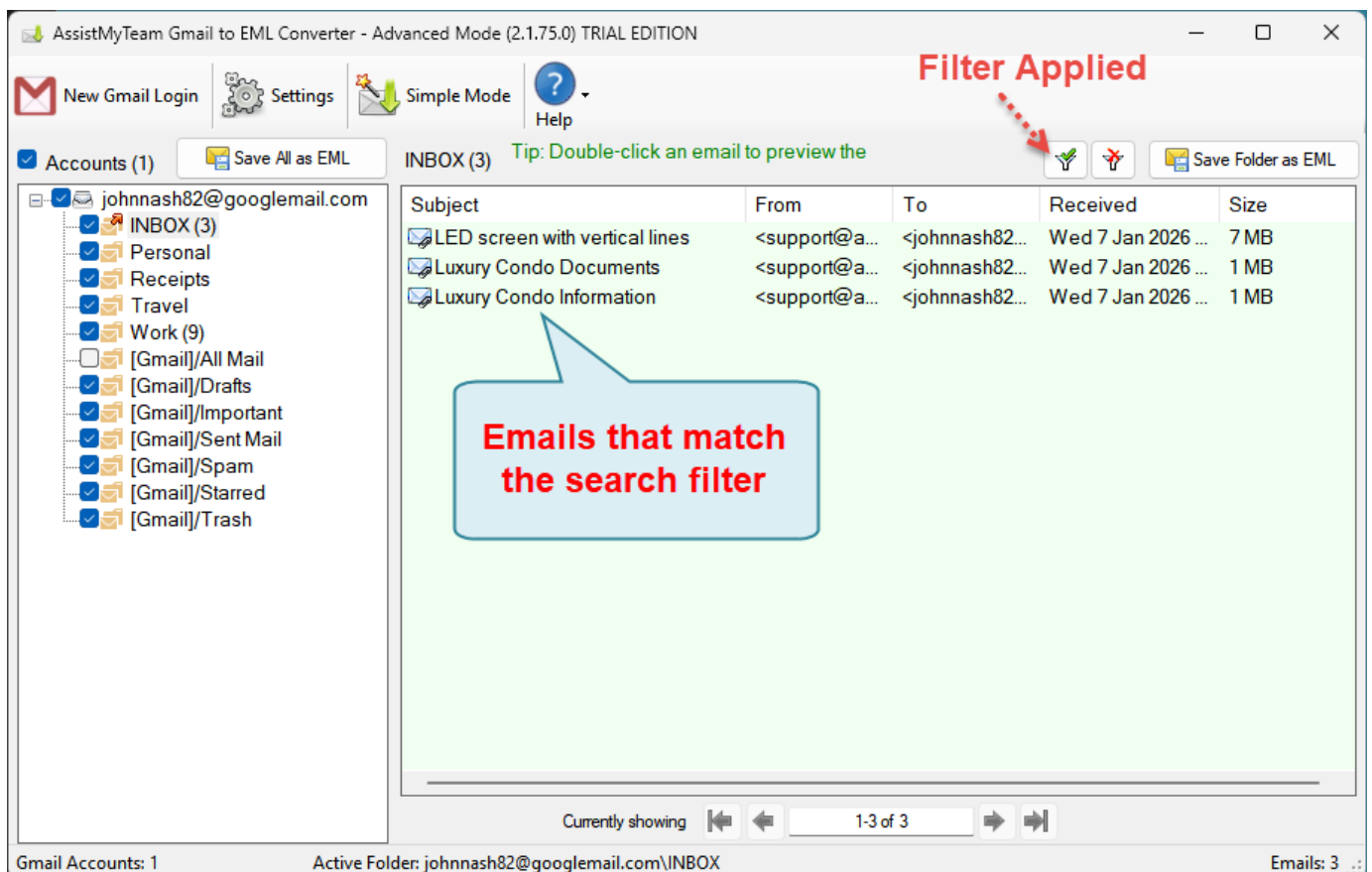
You can choose to perform a keyword search and apply filters and only perform the bulk conversions of those emails in the Gmail account that fulfil the search parameters to EML. To do that, click the **'Filter'** button available on top of the tree-view control box.



A dialog box for the search pop ups enabling you to input keywords search in the subject or body or both. You can also filter the emails by matching the sender in the 'From' field and/or the recipient in the 'To' field. Additionally, you can specify a time duration to restrict the emails that fall between the start and end date.

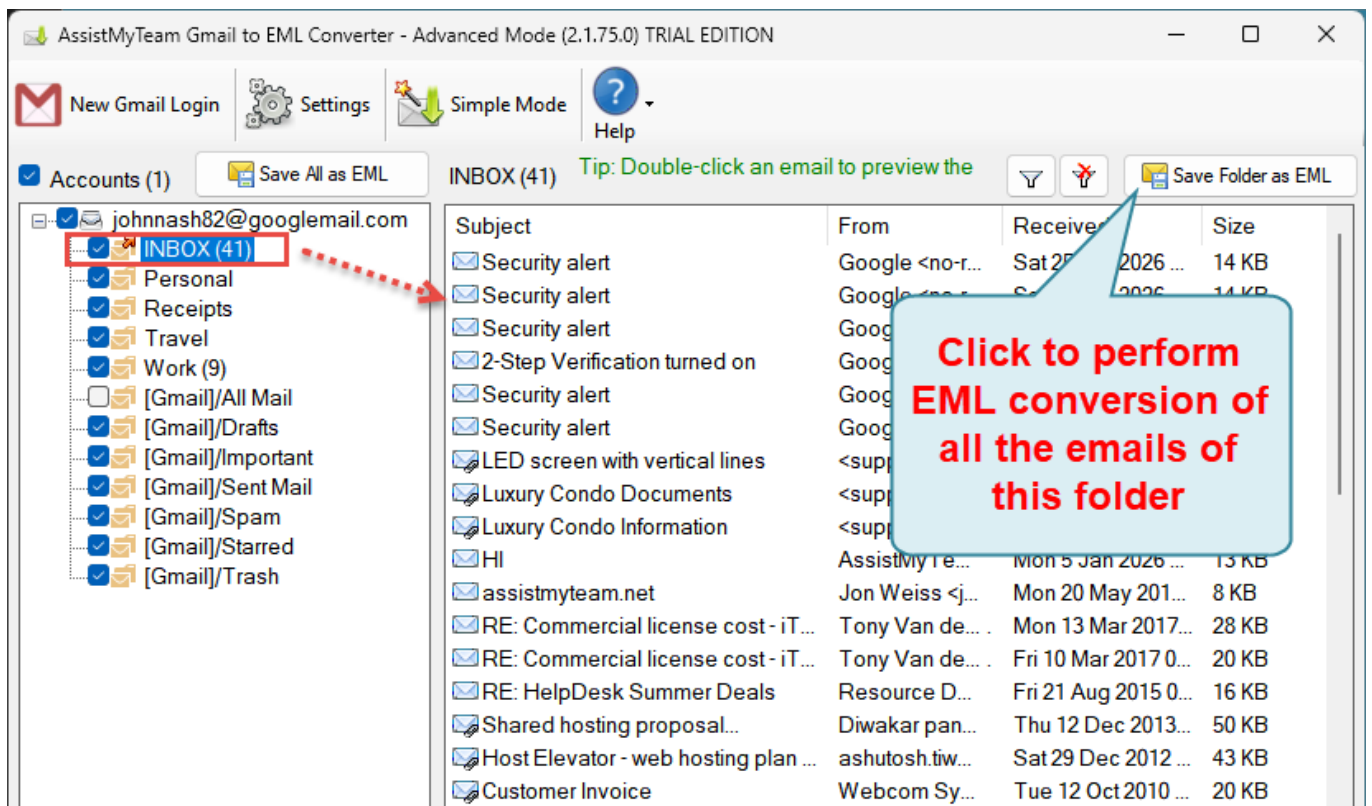


After applying the filters, the filter icon will change with a green tick mark, and the background colour of the email's container box will also be in green.

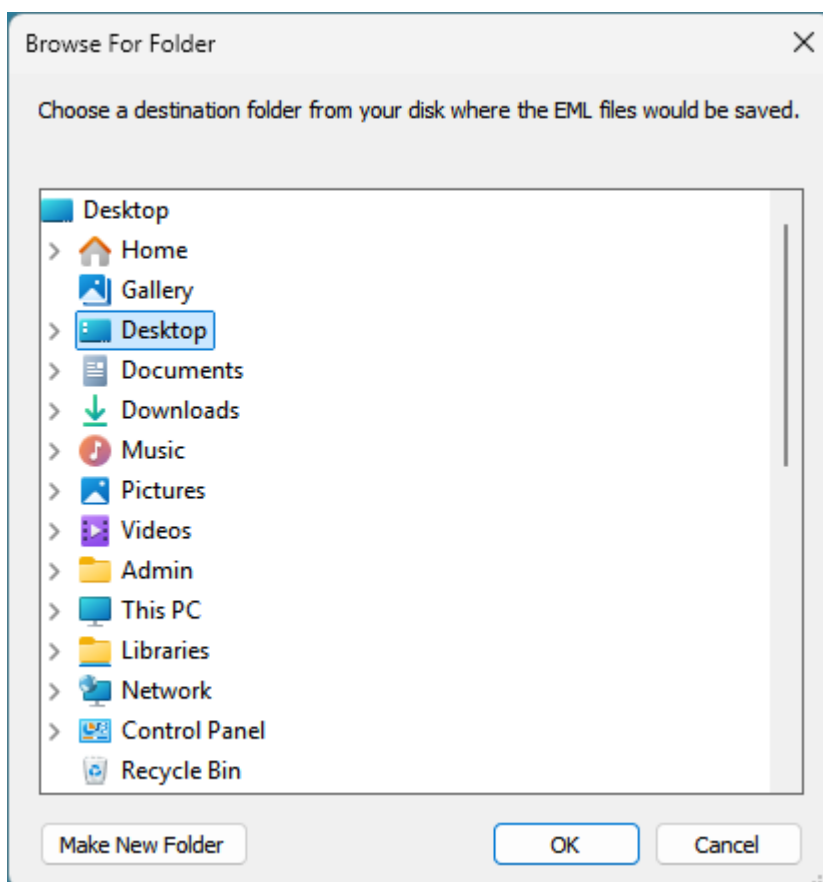


B. Convert Emails of a Gmail account folder to EML (multiple conversion)

At times, what you may need is only to convert emails of a particular Gmail folder. In such needs, you can perform the EML conversion by clicking the particular folder from the folders tree-view, on the left side. This will show you all the emails in the folder view on the right side. You can then proceed to click 'Save Folder as EML' button located on the extreme right corner of the folder view.

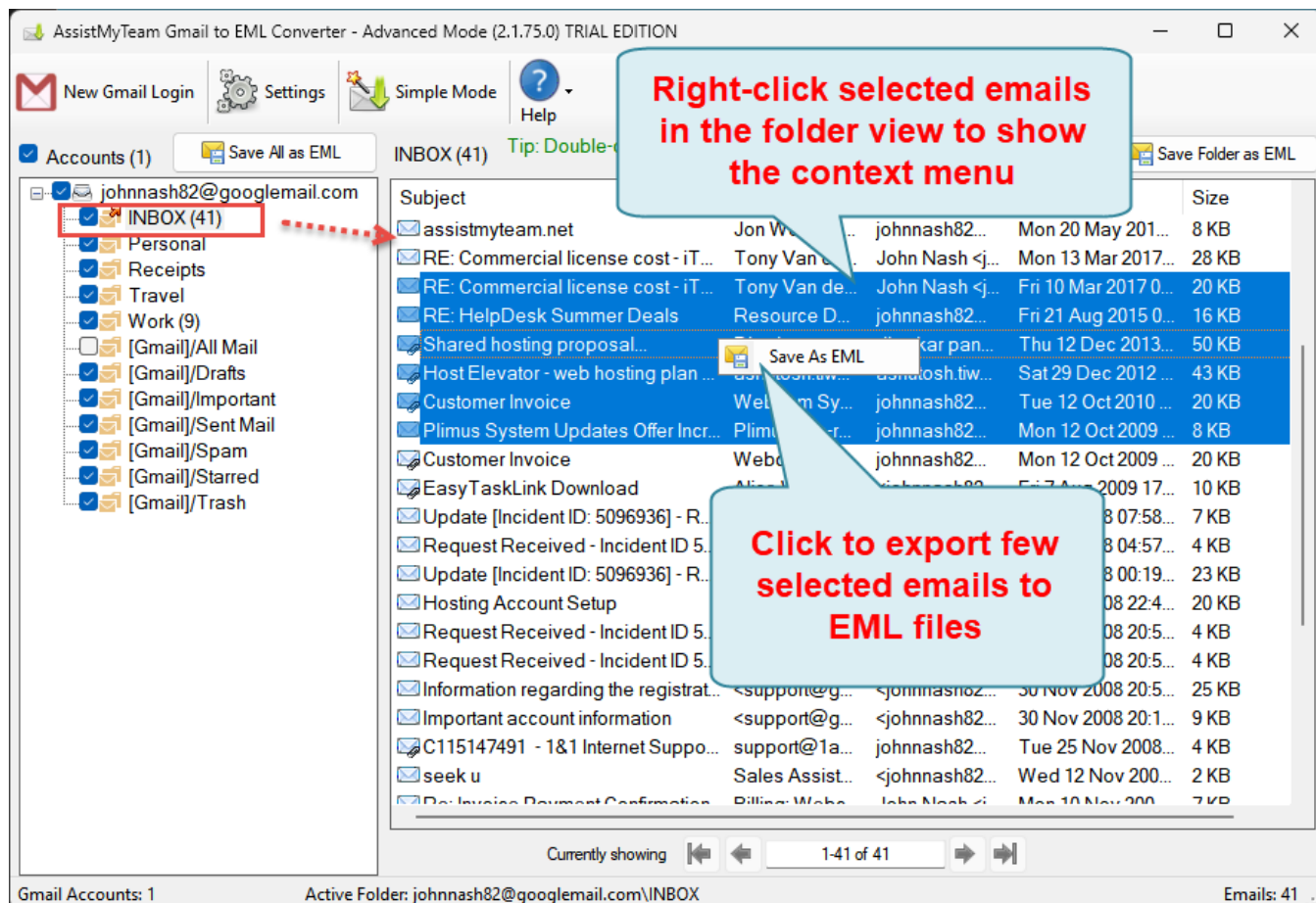


From the 'Browse for Folder' dialog box, choose a destination folder where the selected/checked emails of the particular account will be exported as EML files.

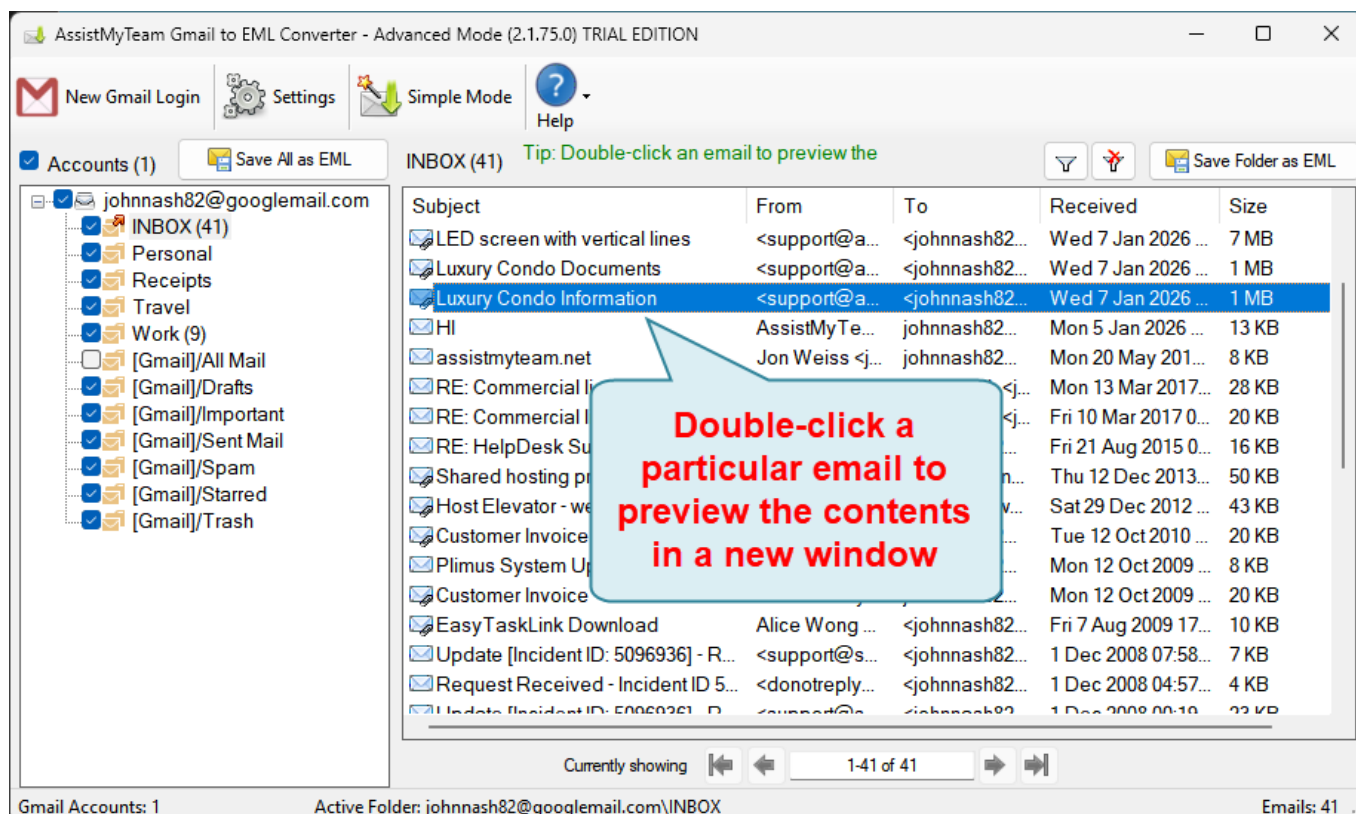


C. Convert few selected emails to EML

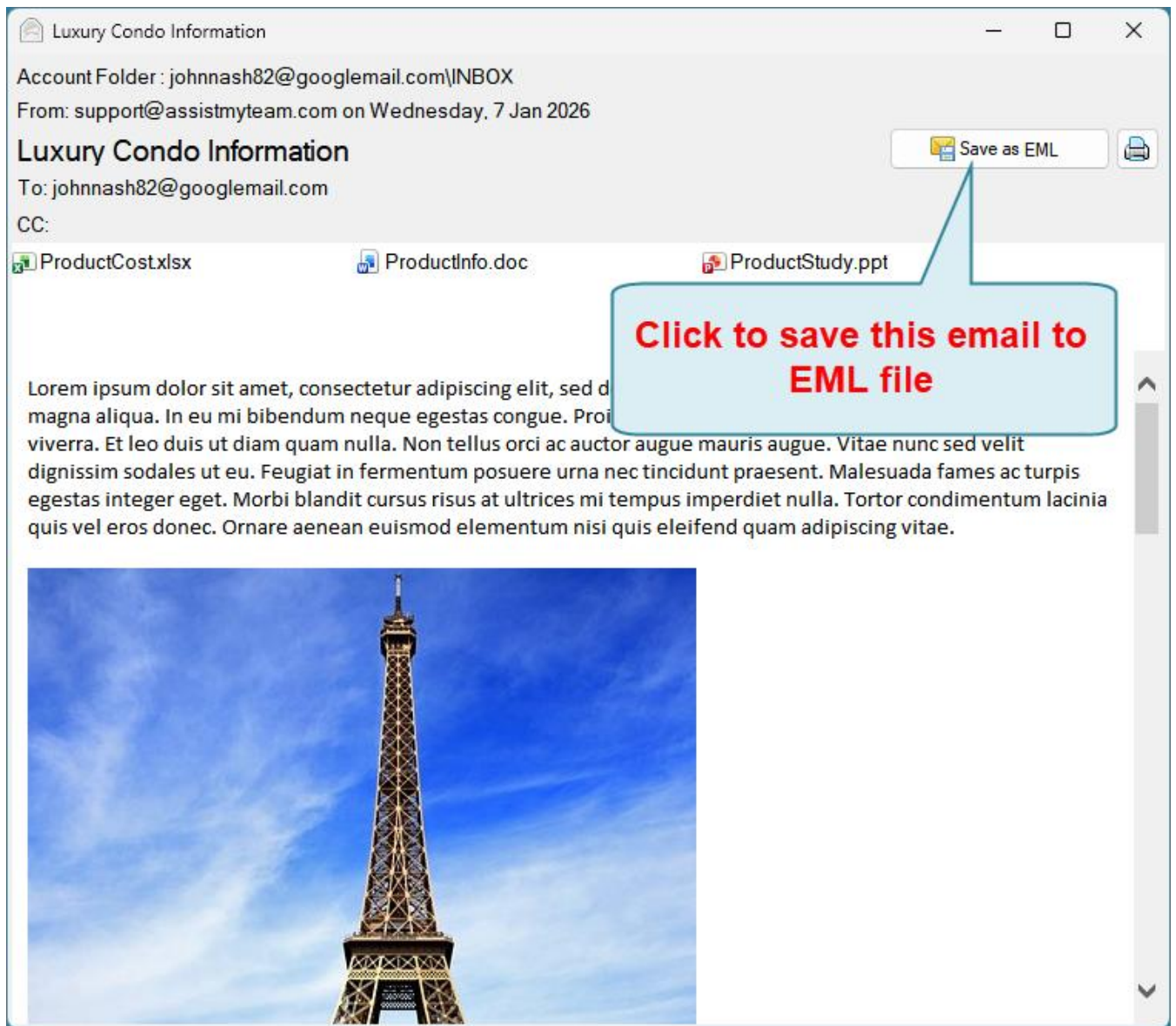
In this mode, you can export only those few emails of interest to EML files. To do this, select multiple emails of your interest from your Inbox and right-click to show the context menu 'Save as EML'.



When you click it, you will be prompted to choose a destination folder where the selected emails from your Gmail Inbox folder will be exported as EML files. Alternatively, you can preview the full content of a particular email, by double-clicking it from your Inbox folder.



This will show you the contents of the particular email in a new window.



And then choose to save the previewed email to EML by clicking the 'Save as EML' button located on the upper right side.

