

V2

AssistMyTeam

# EML to PST Converter

Export EML email files to PST



# Welcome to EML to PST Converter

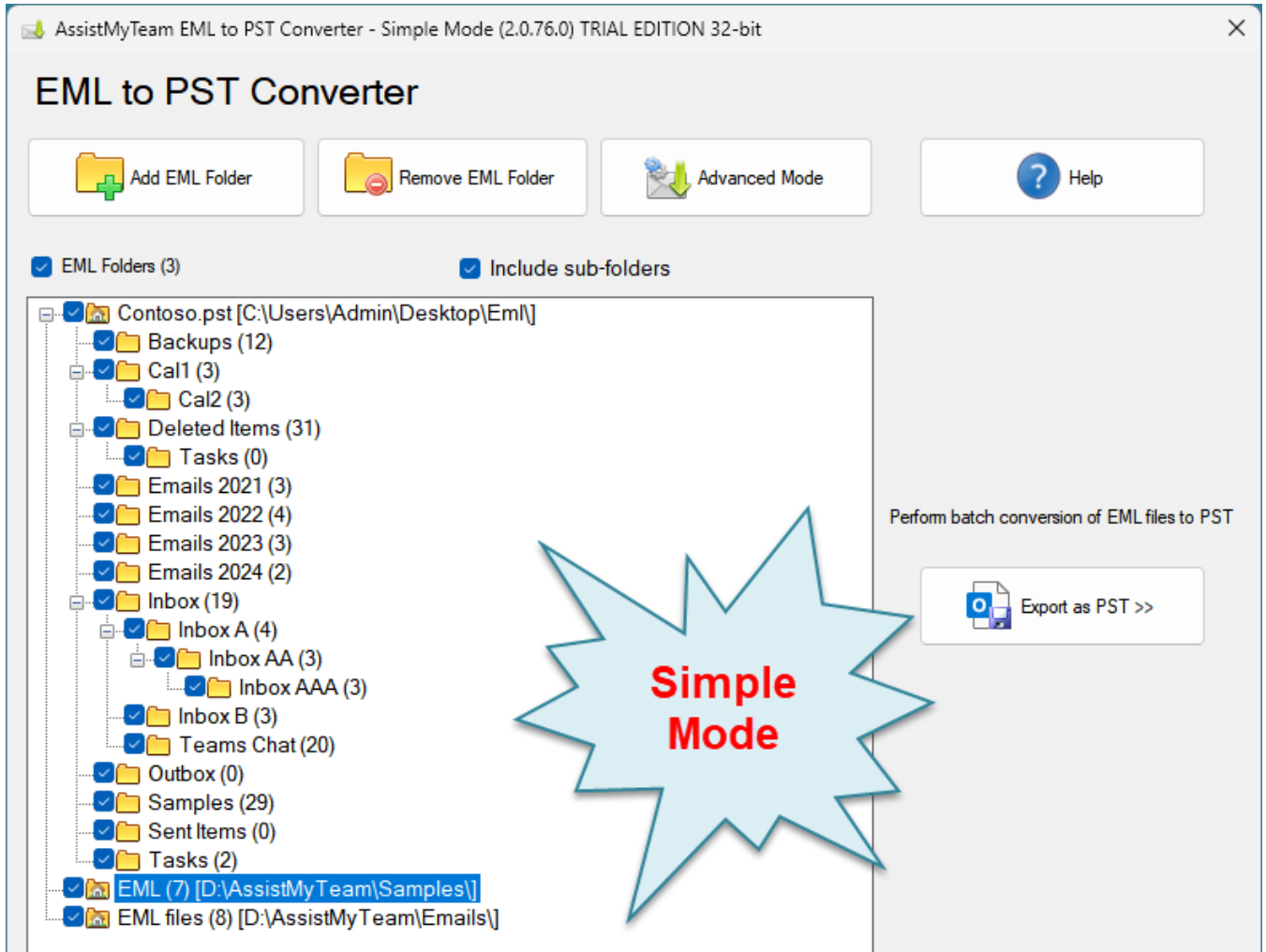
Convert and save EML files and folders to new or existing PST files, while preserving the folder structure and hierarchy – all in a click.

- Archive or export one or several emails or entire EML file folders to PST files in a click.
- Backup email messages for regulatory or legal compliance.
- Preserves attachments, headers, formatting, inline images and hyperlinks of emails in the replicated PST files.
- Automatically enforce consistent naming convention to replicated PST files.
- Retain the same original EML folders structure in the PST for easy access and filing.
- Special MSI installer available for enterprise-wide deployment\*
- Support Windows 11, 10, 8, 7 and Windows Servers

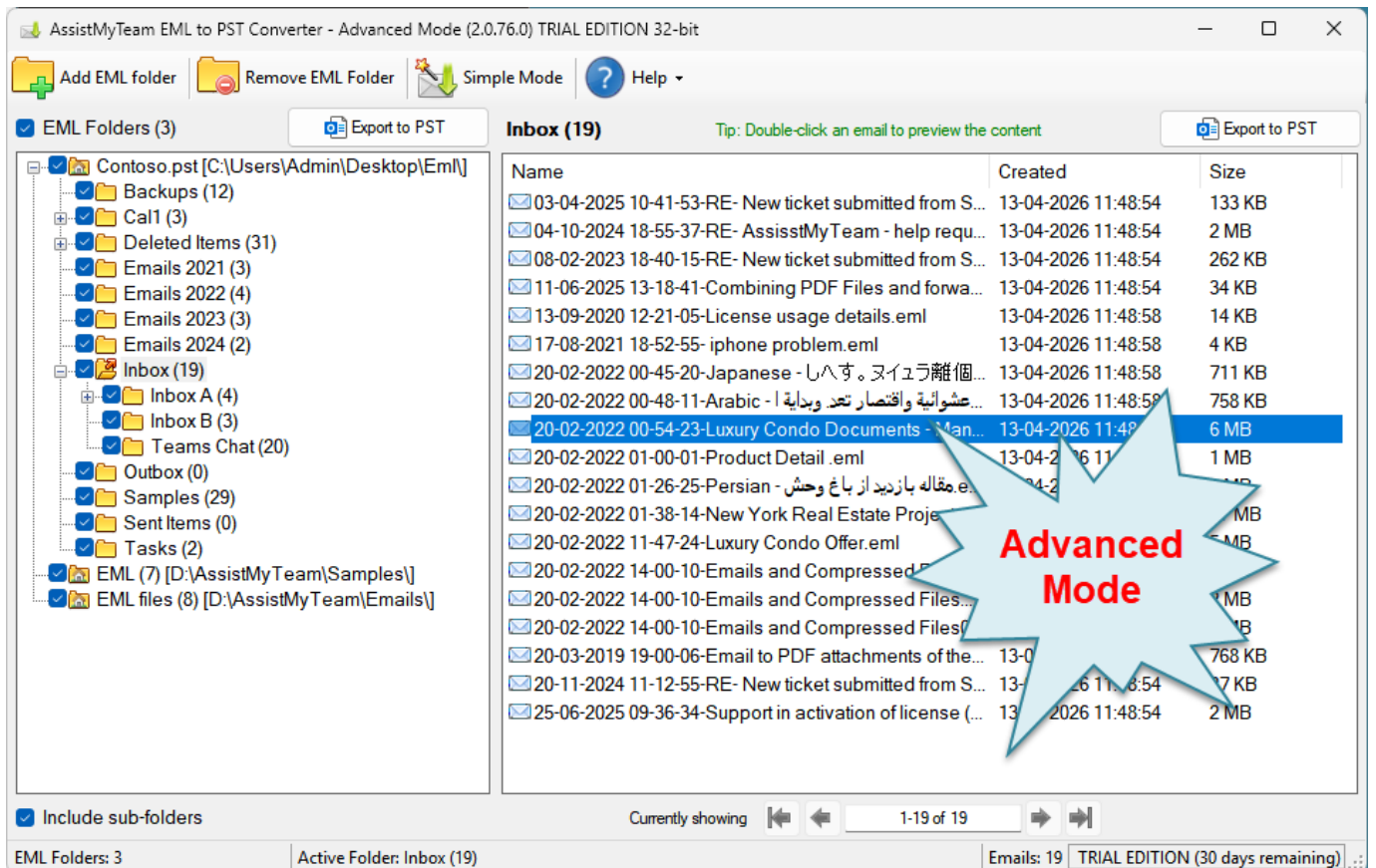
For a quick overview, refer to the [product website](#).

# How It Works?

AssistMyTeam EML to PST Converter can operate in two modes – **Simple** (default) and **Advanced**, which has an interactive user interface with many options to export EML emails to PST file.



## EML to PST Converter – Simple Mode



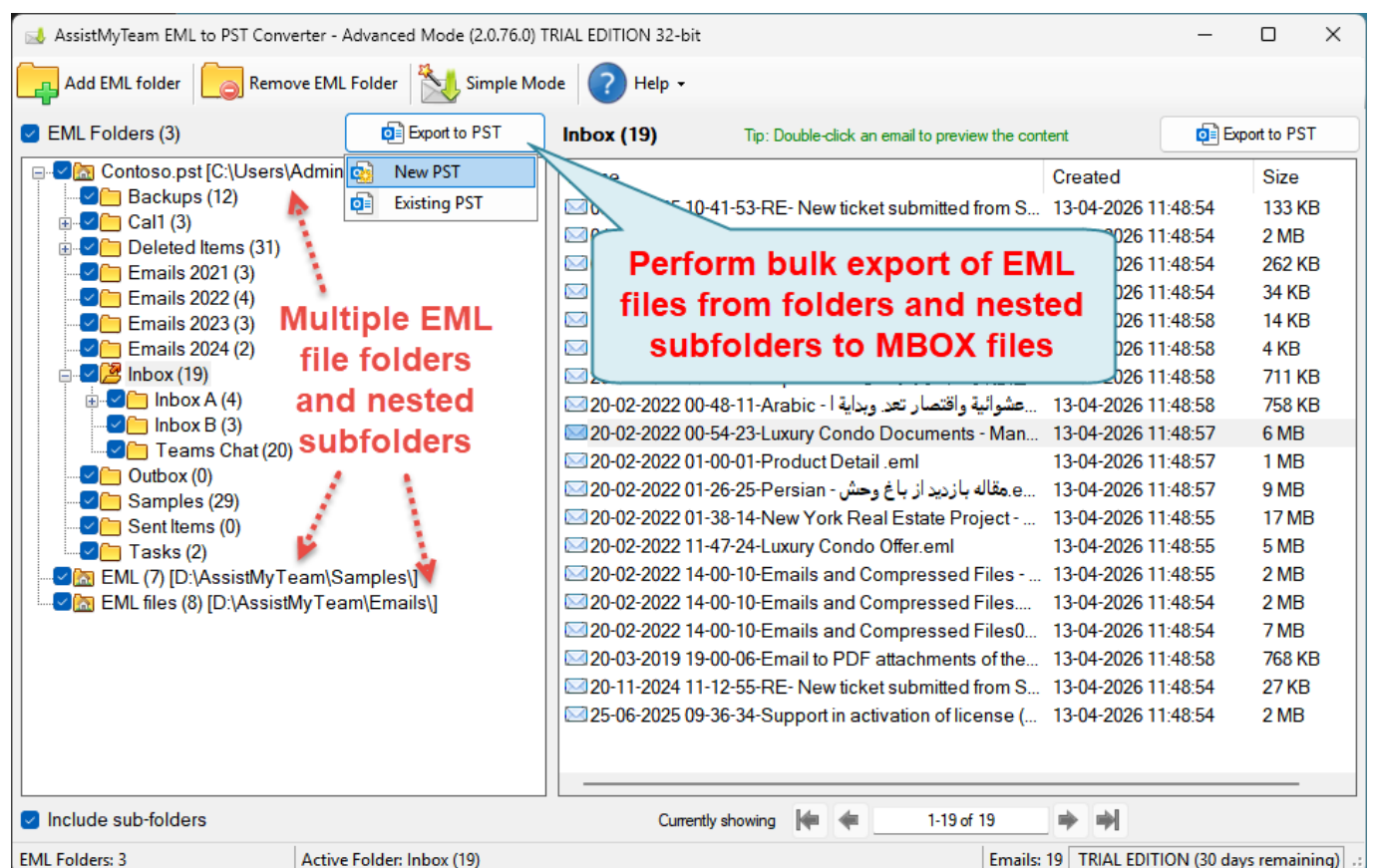
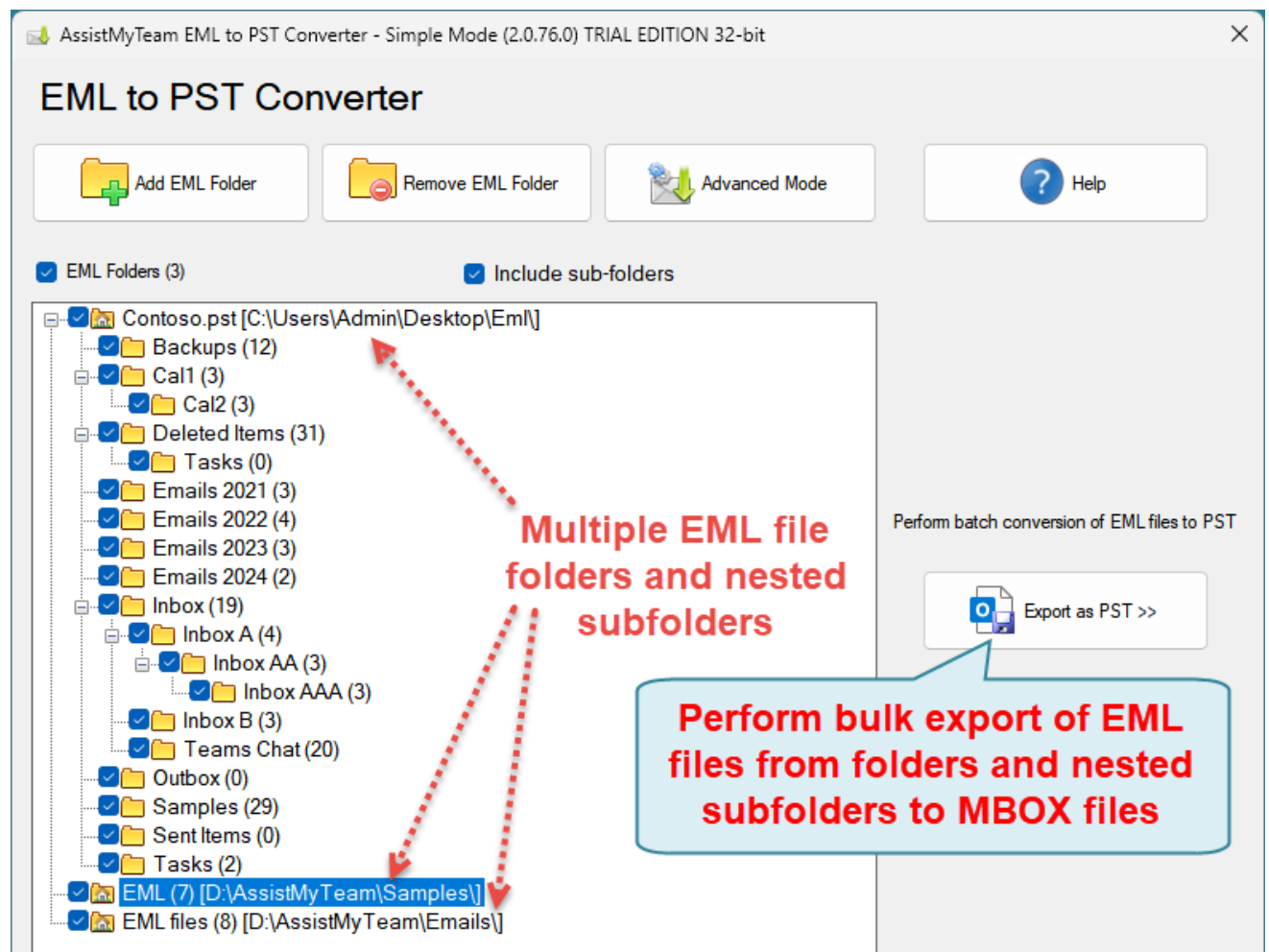
## EML to PST Converter – Advanced Mode

There are four ways to perform export with AssistMyTeam EML to PST Converter:

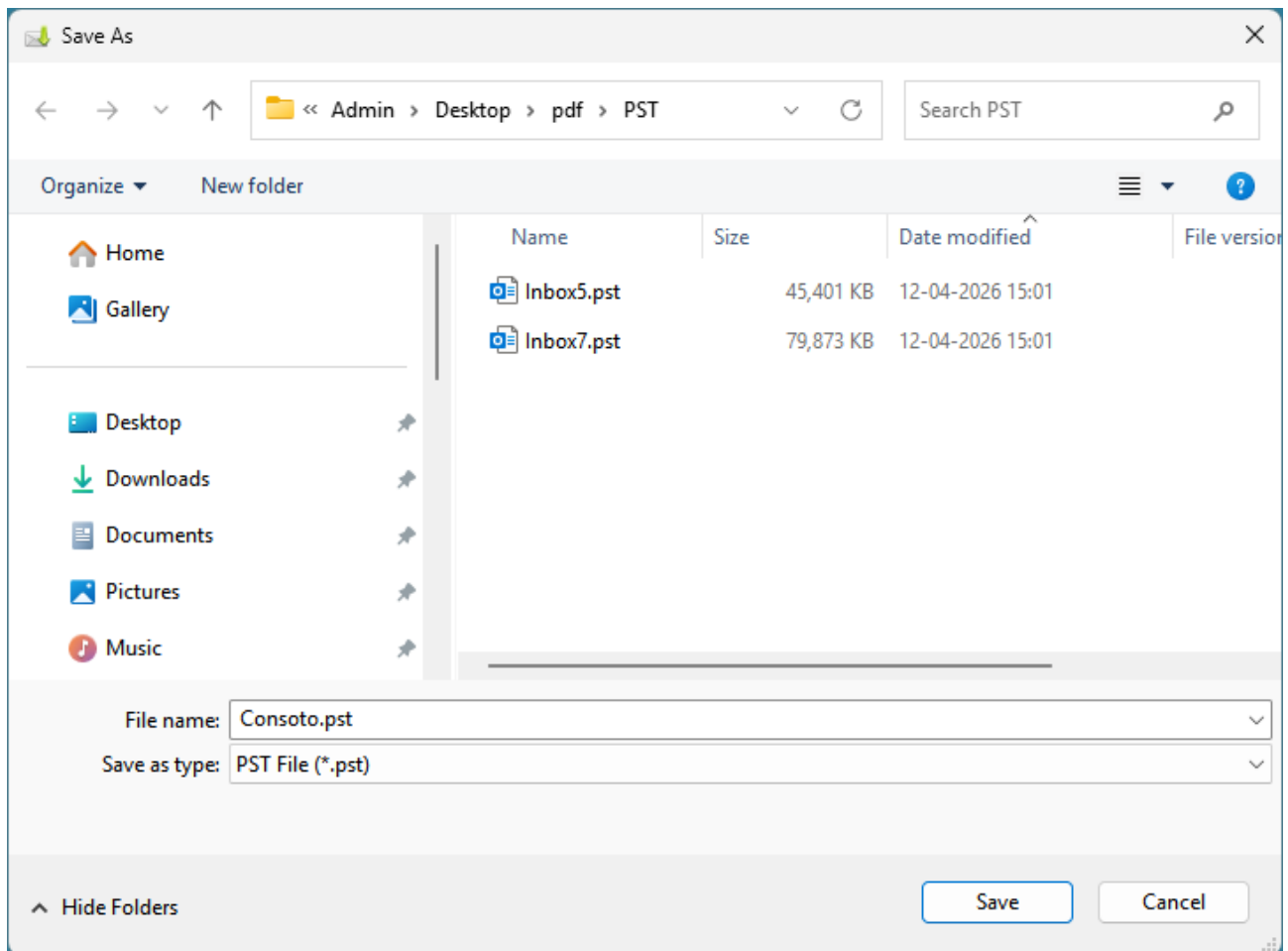
- A. Multiple EML folders including nested subfolders to new or existing PST
- B. Single EML folder to new or existing PST
- C. Multiple EML emails to an existing PST
- D. Single EML email to an existing PST

### A. Export multiple EML folders including nested subfolders to PST (bulk export)

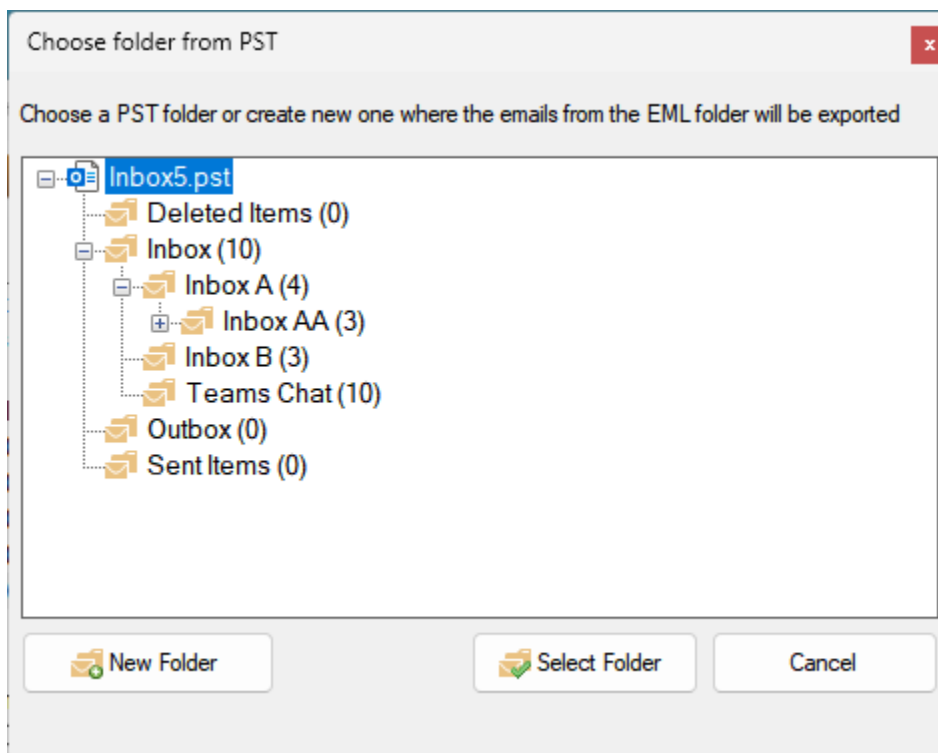
In this mode, you can perform bulk conversion of the whole contents of each EML folder and nested subfolders to a new or an existing PST file. Simply, click the 'Export to PST' button option just above the EML Folders tree-view control.



If you choose to export the EML files/folders to a new PST file, the app will prompt you to specify a destination folder where a new PST file will be created.



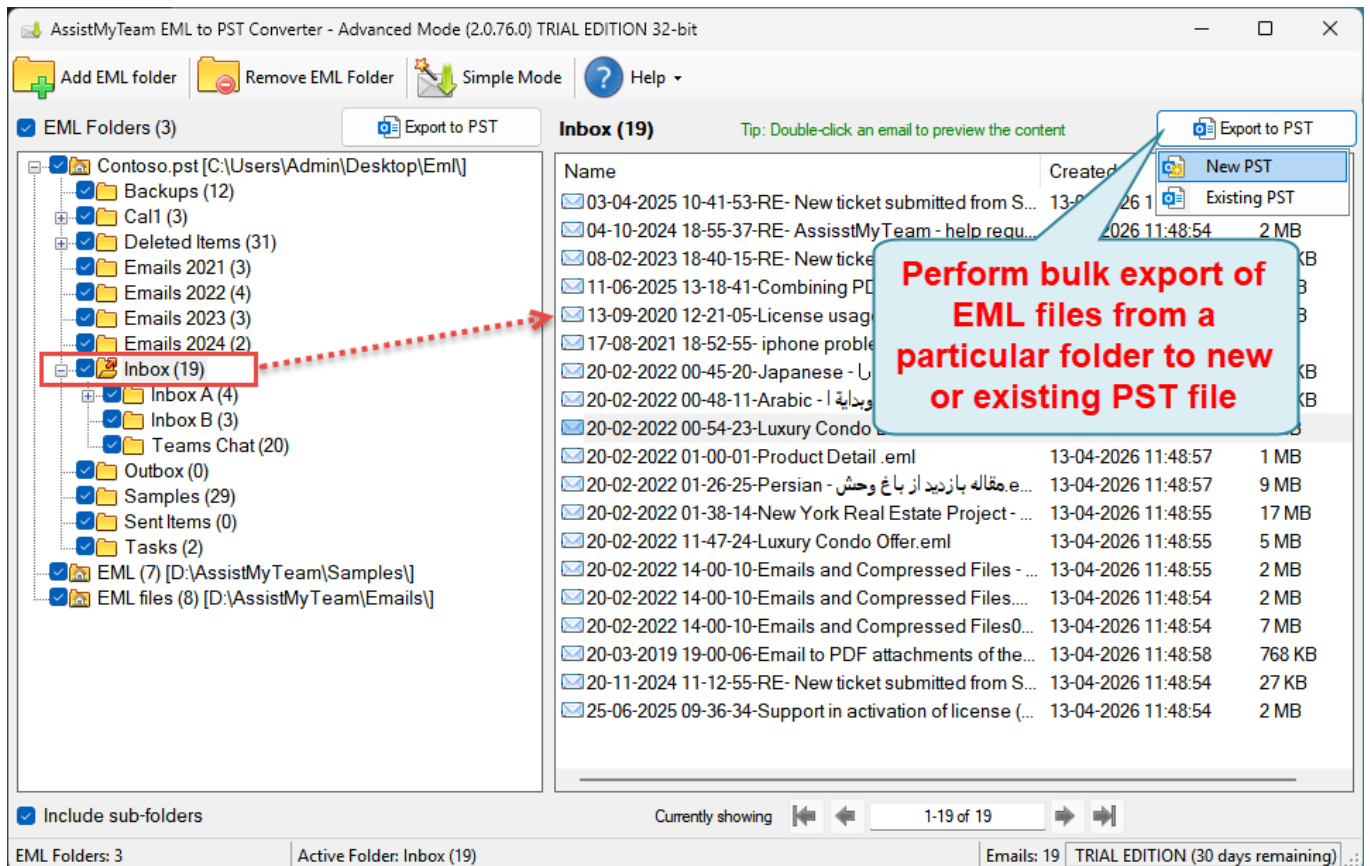
If you choose to export the EML files and folders to an existing PST file, you will be prompted to choose the particular PST file from your computer. And then the app will load and display the folders content of the chosen PST file in a prompt dialog box. And you can then choose a particular PST folder where all the EML files and folders will be exported to.



NOTE: The app will create new PST folders and subfolders similar to the hierarchy and structure of the nested EML sub folders of your computer. If these folders structure are already present (existing) in the chosen PST the app will re-use and direct the export of the EML files to these existing folders/subfolders.

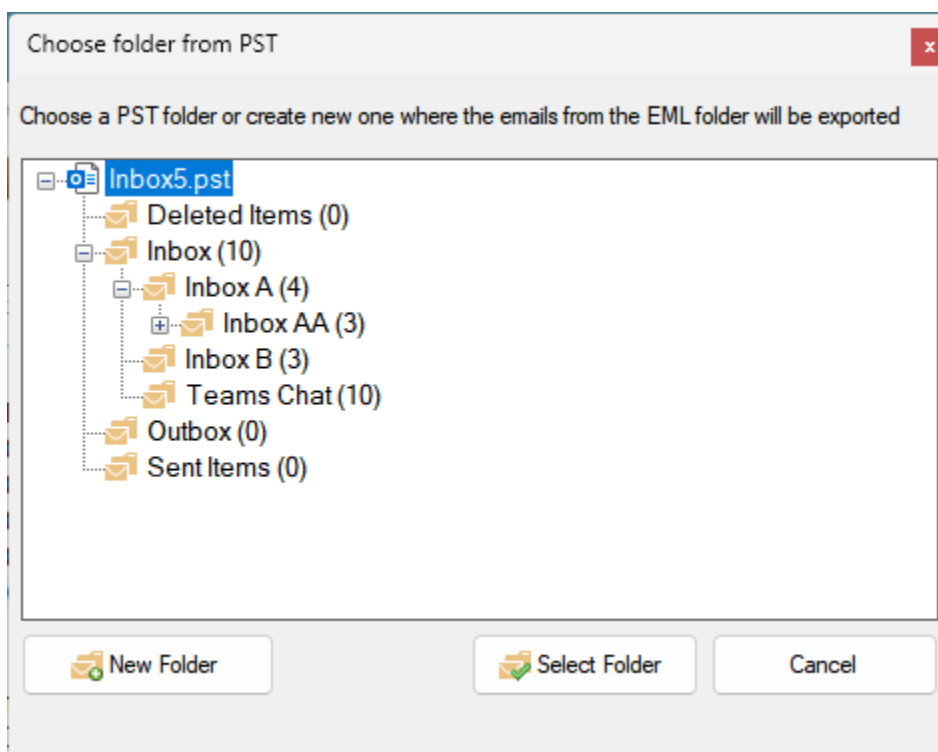
## B. Export a particular EML folder to new or existing PST (multiple export)

At times, what you may need is only to export all the EML files of a particular folder only, to a new or existing PST file. In such needs, you can perform the PST export by clicking the particular folder from the EML tree-view control box on the left side. This will show you all the emails in the folder view control on the right side. You can then proceed to click 'Export to PST' button, located on the extreme right corner of the folder view control.



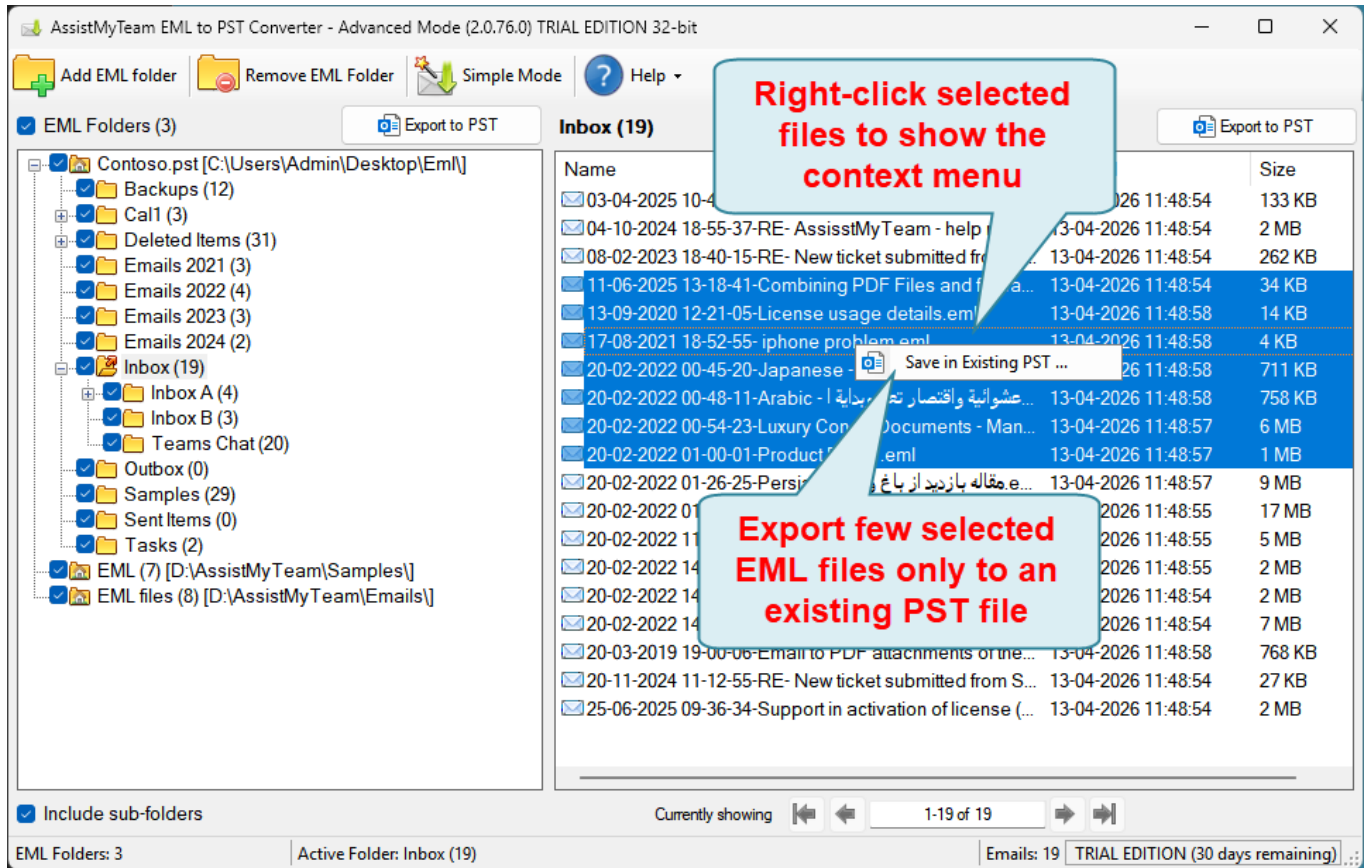
If you choose to export this particular EML folder to a new PST file, the app will prompt you to specify a destination folder where a new PST file will be created.

If you choose to export the EML files of this particular folder to an existing PST file, you will be prompted to choose the particular PST file from your computer. And then the app will load and display the folders content of the chosen PST file in a prompt dialog box. And you can then choose a particular PST folder where all the EML files will be exported to.

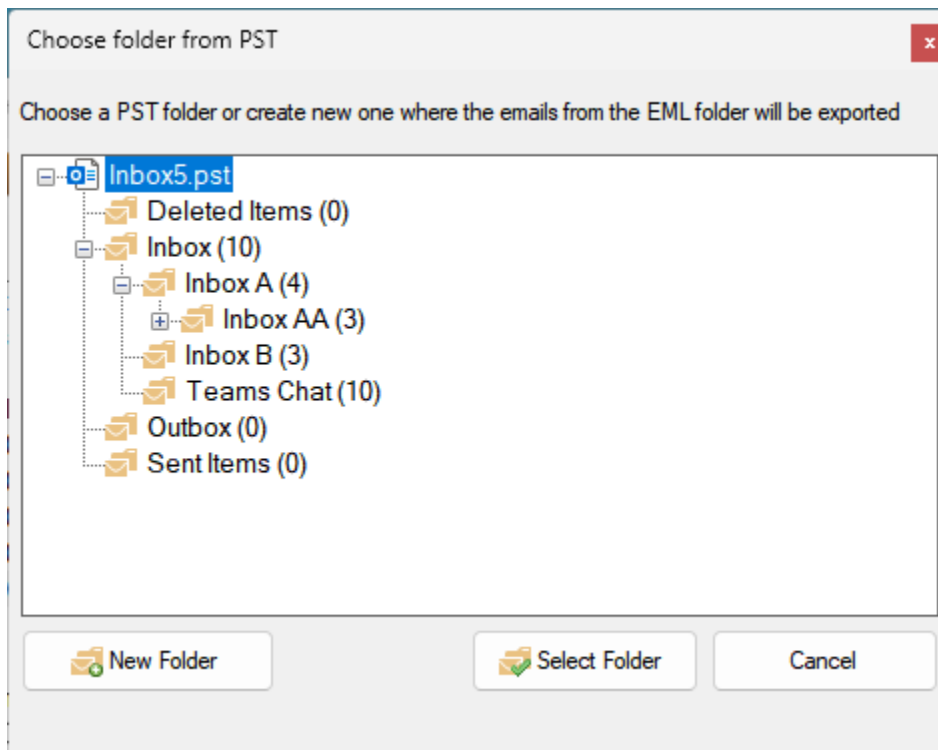


### C. Export selected few EML files to an existing PST (multiple conversion)

If you are interested at exporting only a few selected EML files to an existing PST file, just right-click the selected EML files from the folder view and click 'Save in Existing PST' from the context menu.

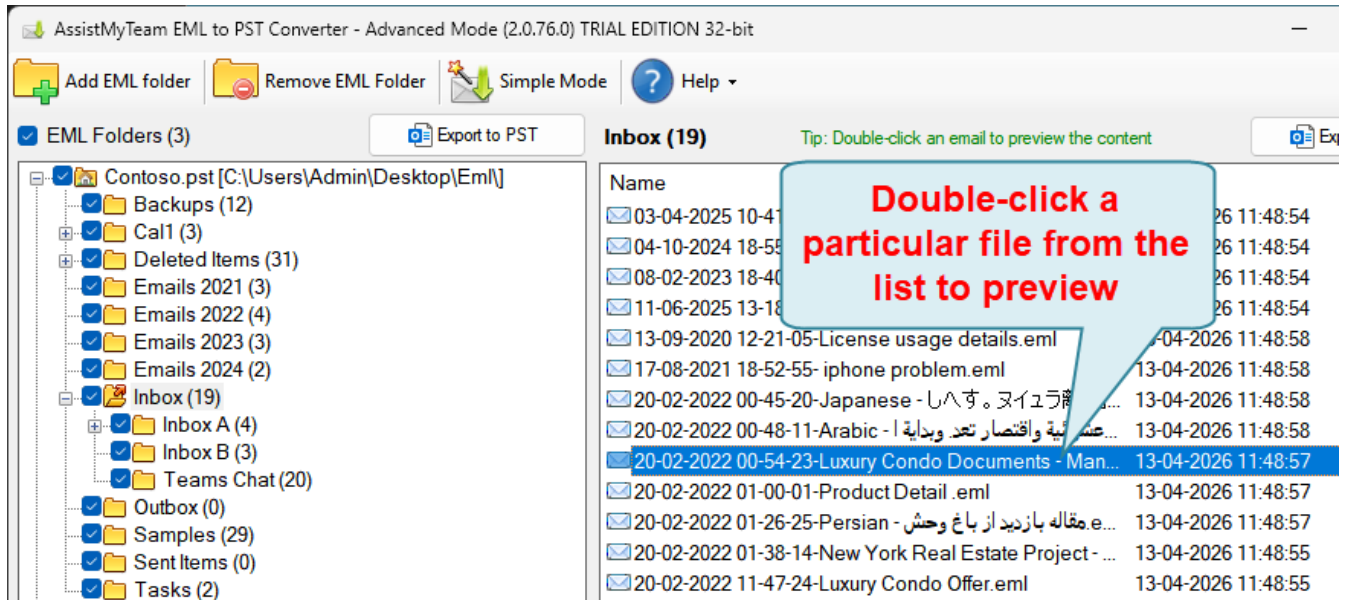


And you will be prompted to choose a PST file from your computer. And then the app will load and display the folders content of the chosen PST file in a prompt dialog box. And you can then choose a particular PST folder where the selected few EML files will be exported to.

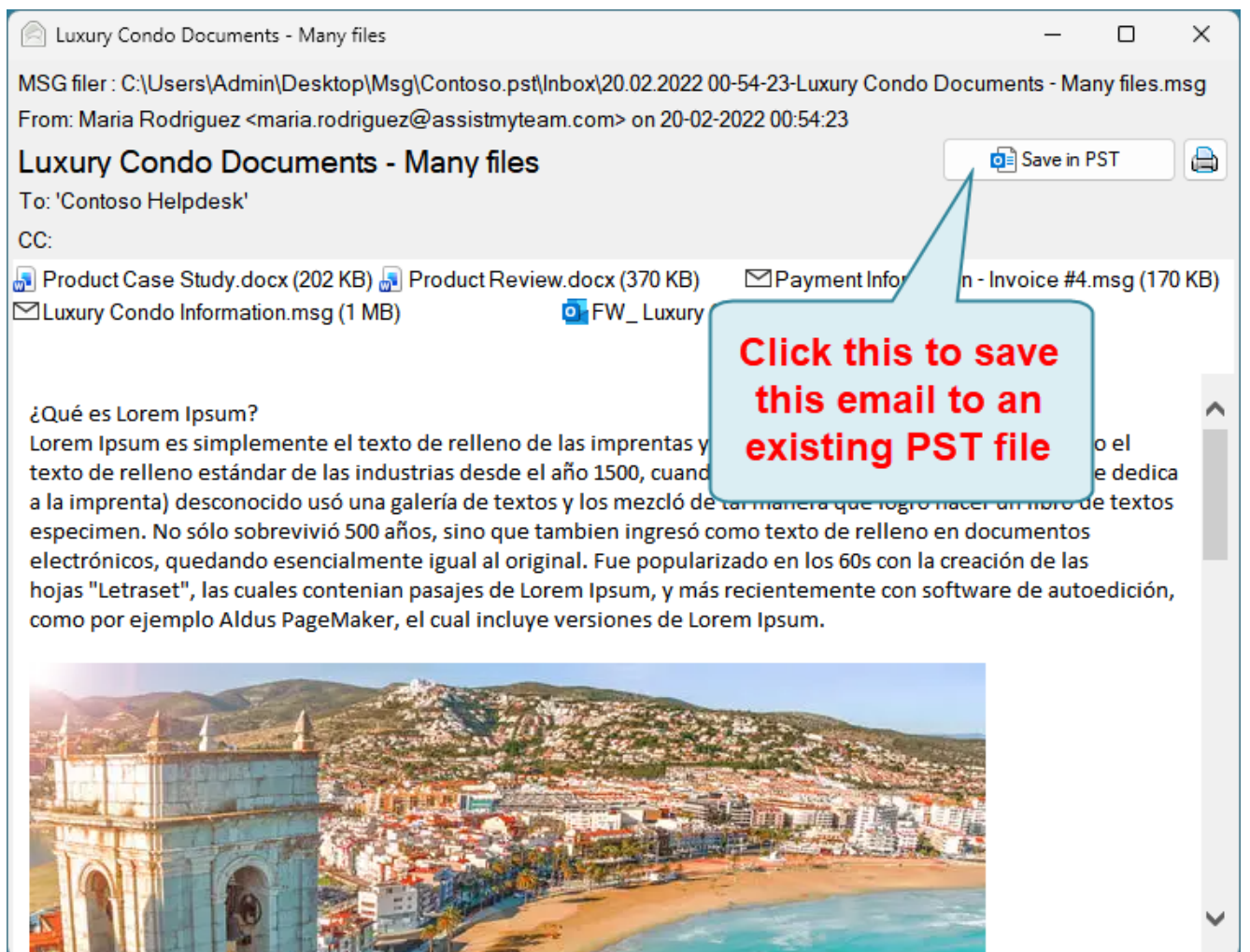


## D. Export a particular EML email to an existing PST (single conversion)

In this mode, you can choose an EML file from a file folder and save and export it to an existing PST file. To achieve this, preview an email of interest by double-clicking it from the list of all emails shown in the folder view.



And then choose to save the previewed email to PST file by clicking the 'Save in PST' button located on the upper right side.



And you will be prompted to choose a PST file from your computer. And then the app will load and display the folders content of the chosen PST file in a prompt dialog box. And you can then choose a particular PST folder where the previewed EML file will be exported to.

