

# AssistMyTeam OLAP add-in for Microsoft Outlook

## *Installation and Configuration*

With this guide, you would be able to quickly install and easily configure AssistMyTeam OLAP add-in in your Microsoft Outlook, and quickly analyze your Outlook and Exchange folders in multiple dimensional views and get useful insights and sense out of your enormous relational data.

*AssistMyTeamOLAPOutlookSetup\_x86.zip* (for both 32-bit Microsoft Outlook)  
*AssistMyTeamOLAPOutlookSetup\_x64.zip* (for both 64-bit Microsoft Outlook)

Extract these file contents to a folder.

### **NOTE: ‘Per User Installation’ and ‘Per Machine Installation’**

*In ‘Per User Installation’, the OLAP tool install is performed 100% on the local system and nothing is installed on your Exchange or Windows Server. Further, this install is intended to serve only the current logged on user of the system/workstation and will be installed under the user's application data folder (instead of Programs Files folder) and no elevated permission is required. So, there won't be a prompt from UAC to allow this install unless you change the install directory to say, Programs Files which will warrant an elevated permission/UAC prompt. If the same system is used by multiple users, each of them need to install the add-in on their profile with the default installation folder location.*

*‘Per Machine Installation’: If you have the need to have a single install that serves all users of the system (i.e., the files will be installed under Program files folder and the add-in will be registered under HKEY\_LOCAL\_MACHINE registry hive rather than HKEY\_CURRENT\_USER), download the Citrix/Terminal Server version of the setups to perform a per machine installation.*

## **Requirements**

To work with AssistMyTeam OLAP Statistics and Reporting tool, you would require the followings

### **Operating Systems**

Windows 10, Windows 8, Windows 7, Windows Vista, Windows Server (All Editions)

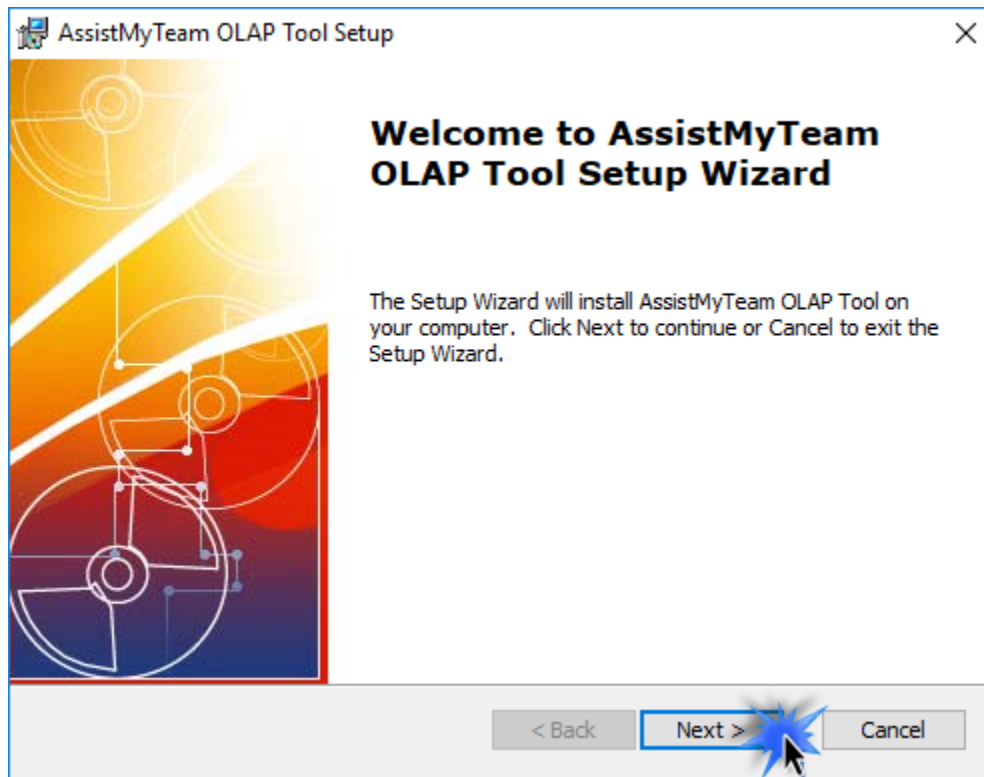
### **.NET Framework**

4.5 or above.

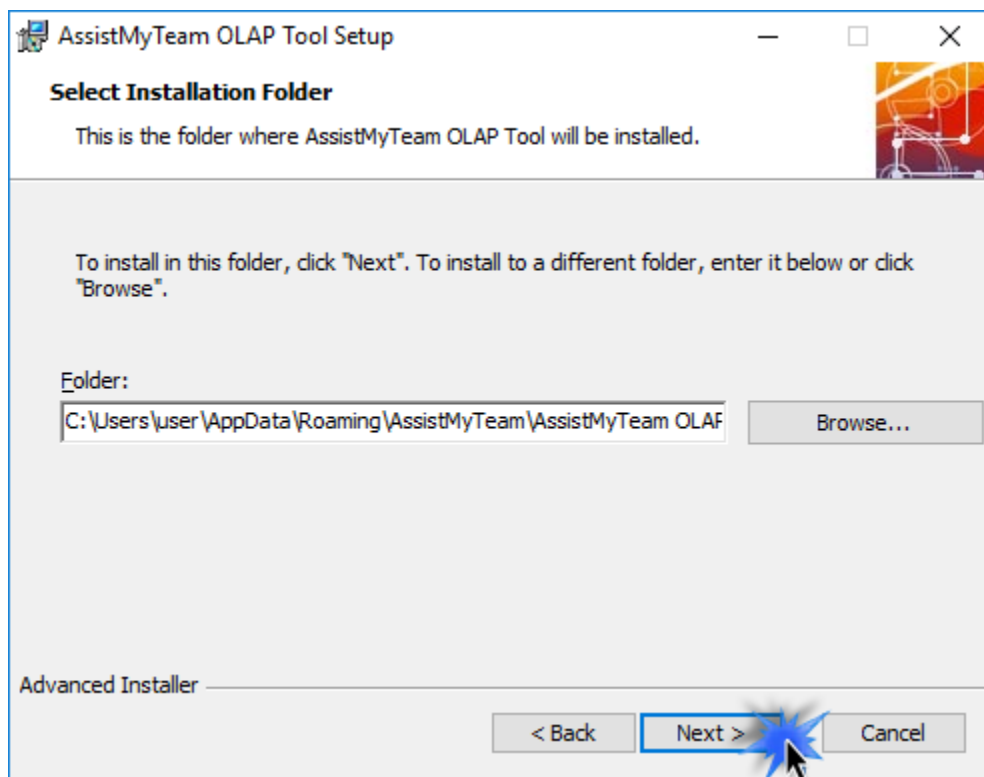
### **Microsoft Outlook**

2007, 2010, 2013, 2016 and 2019 (both 32-bit and 64-bit editions are supported)

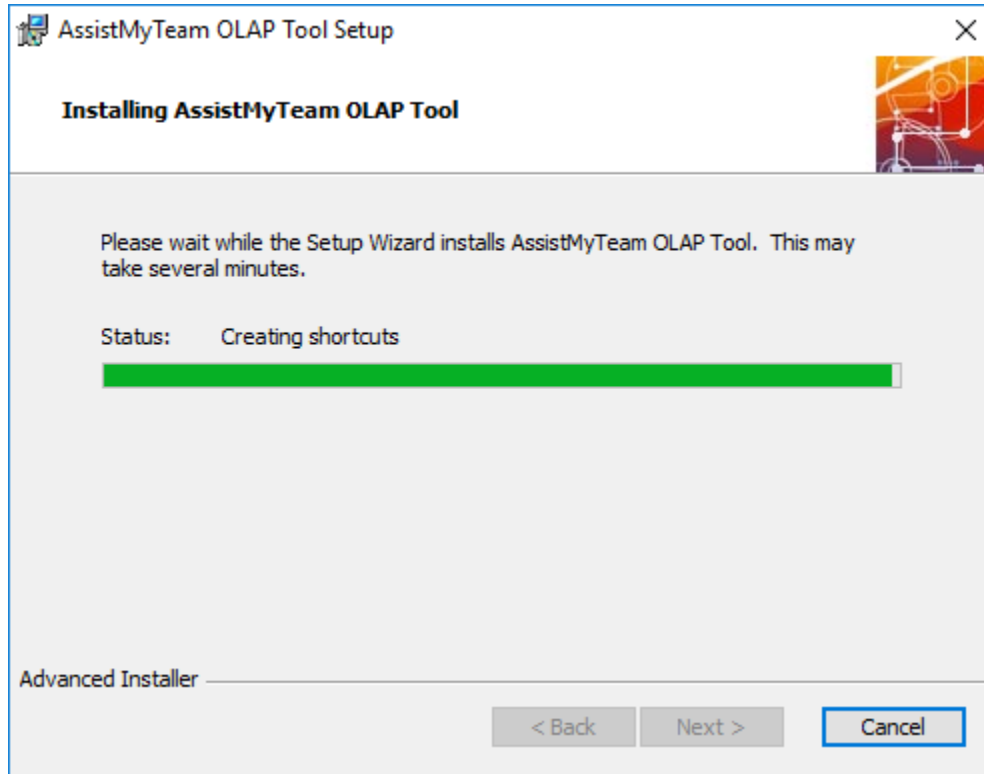
**Step 1.** Run the *AssistMyTeamOLAPOutlookSetup.exe* to start the installation. Click 'Next' to Continue.



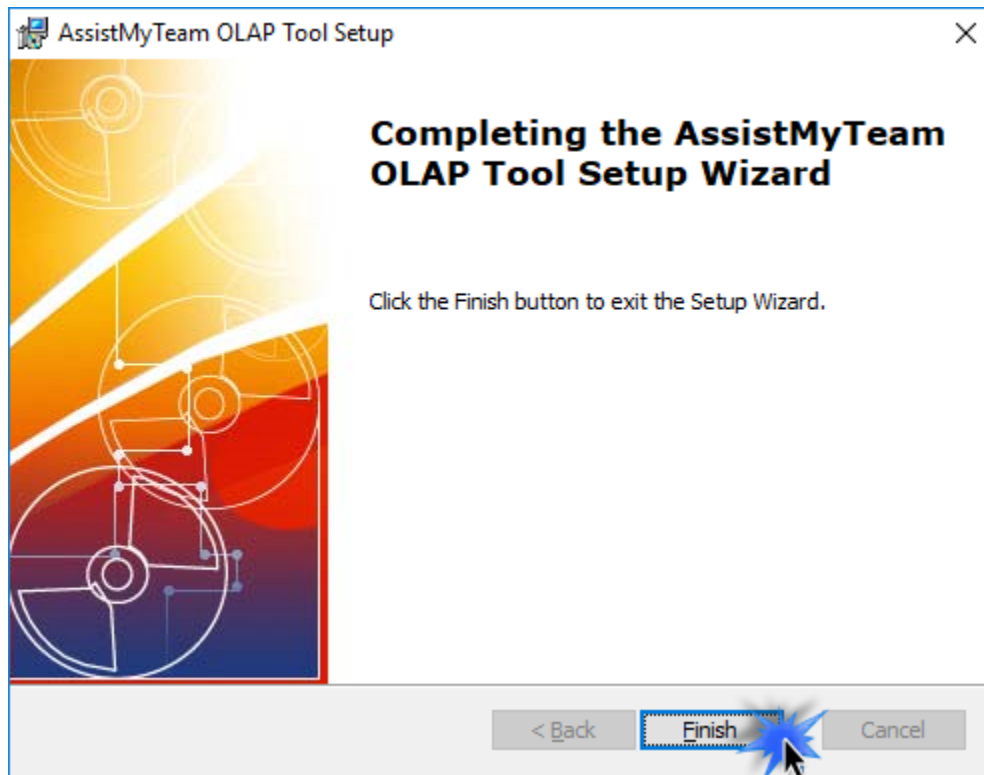
**Step 2.** Select the appropriate destination folder where the application files will be installed. If you change the default folder path, please make sure you have appropriate permission.



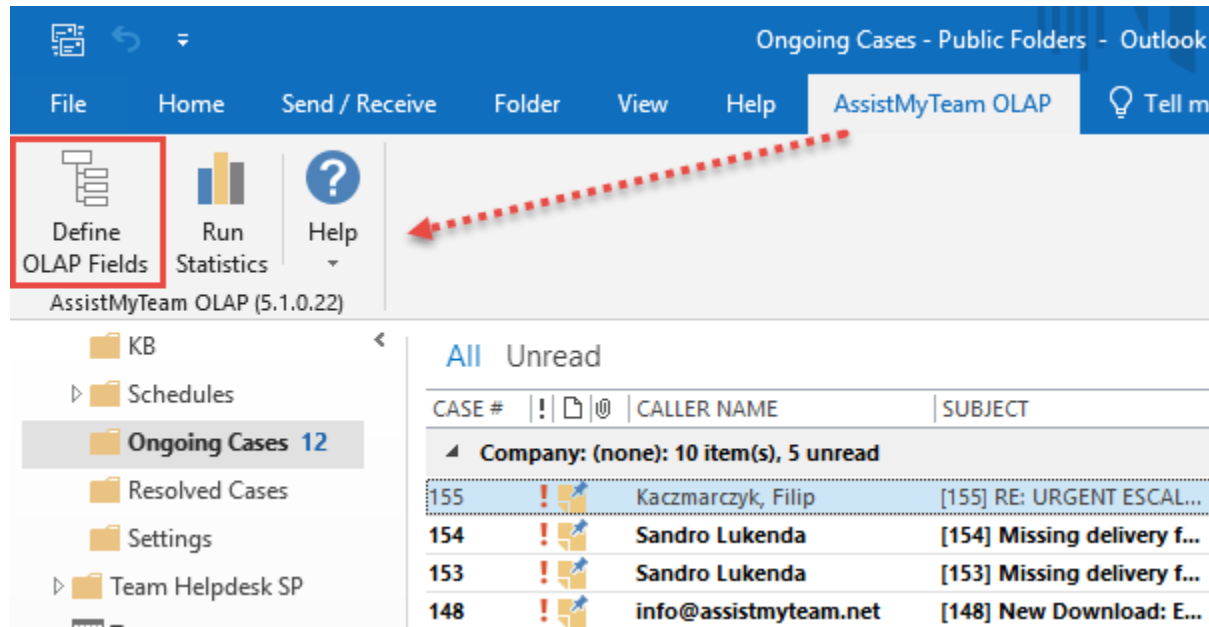
**Step 3.** It just takes a few minutes to complete the whole copying process



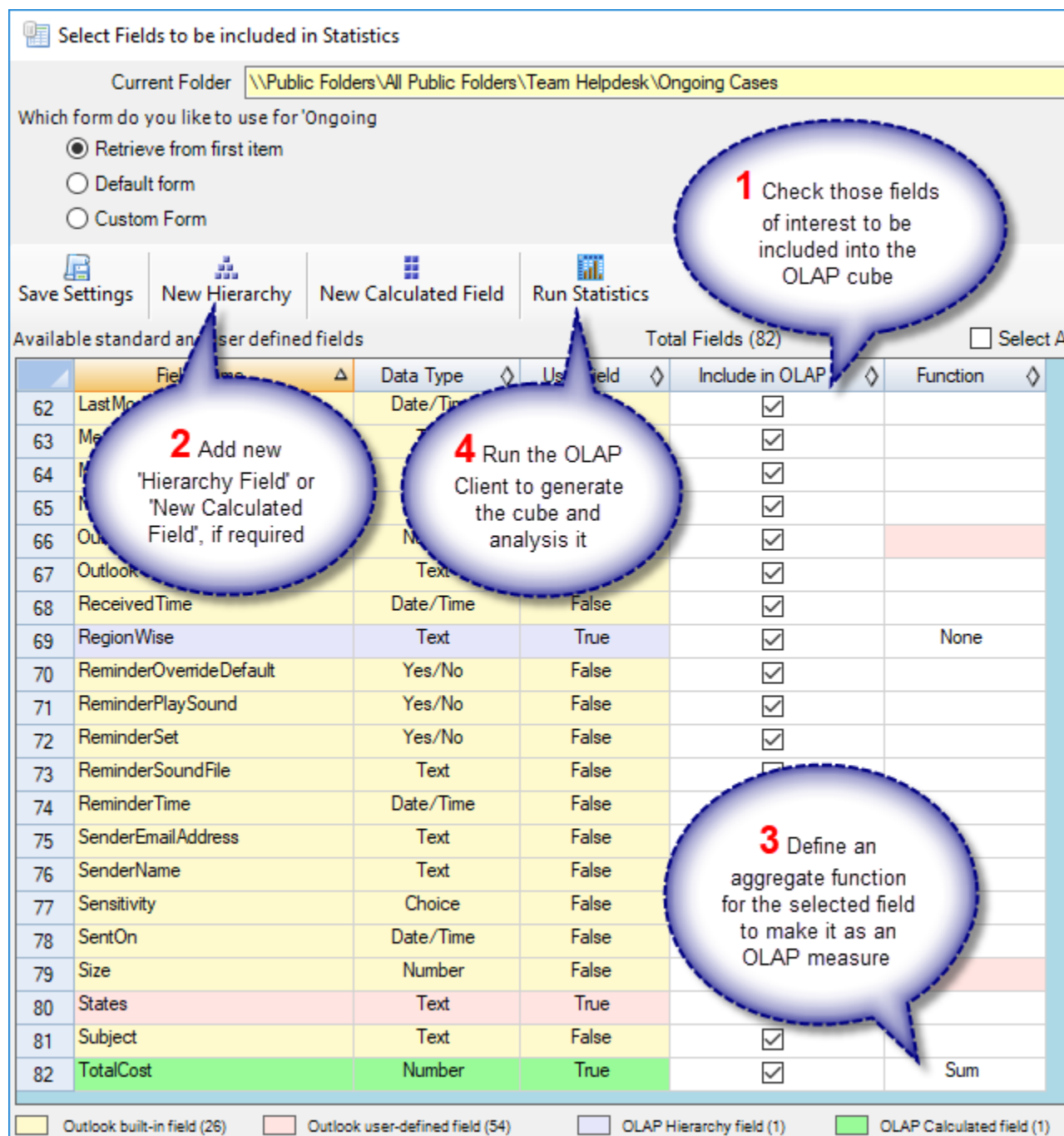
**Step 4.** Click 'Finish'. This ends the files installation process in your system.



Now Start Outlook. If the installation was successful, you will see a new tab in your Outlook ribbon 'AssistMyTeam OLAP'.



To start creating OLAP configuration and cube from an Outlook or Exchange folder, navigate to that particular Outlook or Exchange folder. And from the 'AssistMyTeam OLAP' tab in ribbon, click 'Define OLAP Fields'.



Choose the Outlook fields (including user defined ones) that you want to include in the OLAP cube by checking the corresponding '**Include in OLAP**' check box. You can also add new composite or calculated fields by clicking the 'New Hierarchy' or 'New Calculated Field' buttons. Once a configuration is achieved, click '**Run Statistics**'. This will create a OLAP cube and will be loaded in the **OLAP Client tool**.

The AssistMyTeam OLAP Client tool is the main interface for analyzing the cube and generating reports. This tool consists of the Grid and Chart views with a high level of customizable user interface and interaction.

The screenshot displays the 'OLAP Statistics and Reporting Client' window. The interface includes a menu bar (File, Views, Help), a toolbar with buttons like 'Open Cube Schema...', 'Open View...', 'Reset Chart/Grid', and 'Sync Chart/Grid', and a tabbed view with 'Grid' and 'Chart' tabs. The 'Grid' tab is active, showing a data grid with columns for 'Year - Order Date', 'Quarter - Order Date', 'Month - Order Date', 'Value', and 'Percent of Grand Total'. The data is organized into a hierarchy, with rows for years (1995, 1996, 1994) and columns for quarters and months. The 'Total Sales' measure is selected in the 'Columns area'.

Measures			Total Sales	
			Value	Percent of Grand Total
Year - Order Date	Quarter - Order Date	Month - Order Date		
1995			\$631,805.59	46.65%
1996	1 quarter		\$282,869.88	20.89%
	2 quarter	May	\$140,523.87	10.38%
		April	\$109,816.50	8.11%
		June	\$13,992.11	1.03%
	2 quarter		\$264,332.48	19.52%
		1996	\$547,202.36	40.40%
1994	4 quarter	December	\$51,287.05	3.79%
		November	\$39,612.85	2.92%
		October	\$27,634.60	2.04%
	4 quarter		\$118,534.50	8.75%
	3 quarter		\$56,795.10	4.19%
		1994	\$175,329.60	12.95%
		Total	\$1,354,337.55	100.00%

For more references and help, refer to the PDF Help Manual, which can be invoke from **Start Menu > All Apps > AssistMyTeam OLAP Tool > Help Manual**.

You can also download the full PDF help manual directly from [this link](#).

---- End of Install Guide